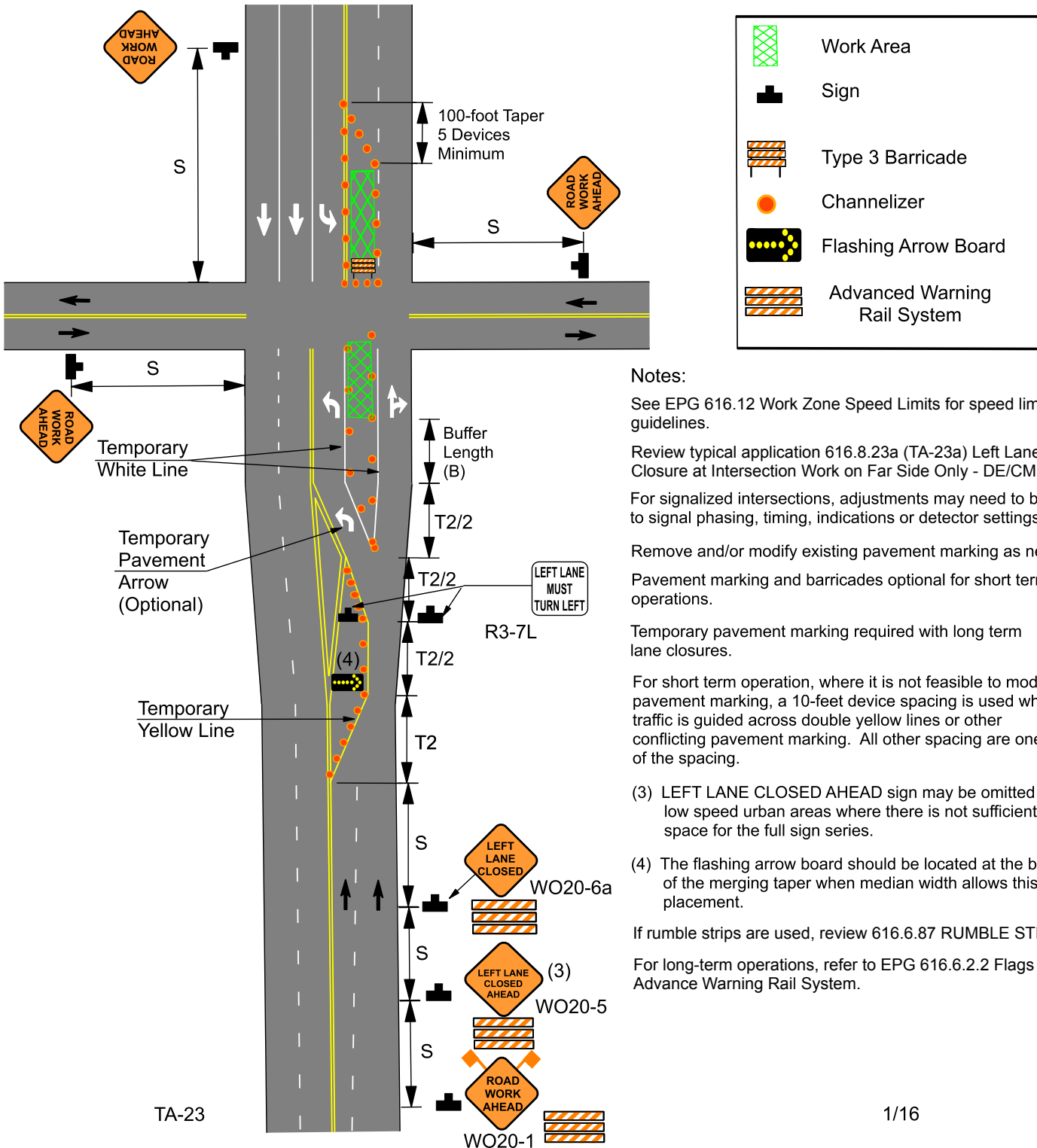


616.8.23 (TA-23) Lane Closure of Left Lane on Far Side of Intersection Work on Near or Far Side - DE/CM

SPEED	SIGN SPACING (ft.)		TAPER LENGTH (ft.)		OPTIONAL BUFFER LENGTH (ft.) (B)	CHANNELIZER SPACING (ft.)	
	Undivided (S)	Divided (S)	Shoulder (1) (T1)	Lane (2) (T2)		Tapers	Buffer/ Work Areas
0-35	200	200	70	245	280	35	40
40-45	350	500	150	540	400	40	80
50-55	500	1000	185	660	560	50	80
60-70	1000	SA - 1000 SB - 1500 SC - 2640	235	840	840	60	120

1 Shoulder taper length based on 10 ft. (standard shoulder width) offset. 2. Lane taper length based on 12 ft. (standard lane width) offset.



Notes:

- See EPG 616.12 Work Zone Speed Limits for speed limit guidelines.
- Review typical application 616.8.23a (TA-23a) Left Lane Closure at Intersection Work on Far Side Only - DE/CM.
- For signalized intersections, adjustments may need to be made to signal phasing, timing, indications or detector settings.
- Remove and/or modify existing pavement marking as needed.
- Pavement marking and barricades optional for short term operations.
- Temporary pavement marking required with long term lane closures.
- For short term operation, where it is not feasible to modify pavement marking, a 10-foot device spacing is used where traffic is guided across double yellow lines or other conflicting pavement marking. All other spacing are one-half of the spacing.
- (3) LEFT LANE CLOSED AHEAD sign may be omitted in low speed urban areas where there is not sufficient space for the full sign series.
- (4) The flashing arrow board should be located at the beginning of the merging taper when median width allows this placement.
- If rumble strips are used, review 616.6.87 RUMBLE STRIPS.
- For long-term operations, refer to EPG 616.6.2.2 Flags and Advance Warning Rail System.