

Appendix B:

Sample Set of Plans for I-270 and Dorsett Rd
(Maryland Heights)

MISSOURI HIGHWAYS AND TRANSPORTATION COMMISSION PLANS FOR PROPOSED STATE HIGHWAY

ST. LOUIS COUNTY T 46 N - R 5 E

DESIGN DESIGNATION

I-270	DORSETT
A.D.T. - 2009 = 172,000	A.D.T. - 2009 = 46,000
A.D.T. - 2029 = 190,000	A.D.T. - 2029 = 51,000
D.H.V. = 17%	D.H.V. = 17%
T = 10.0%	T = 10.0%
V = 60 M.P.H.	V = 35 M.P.H.

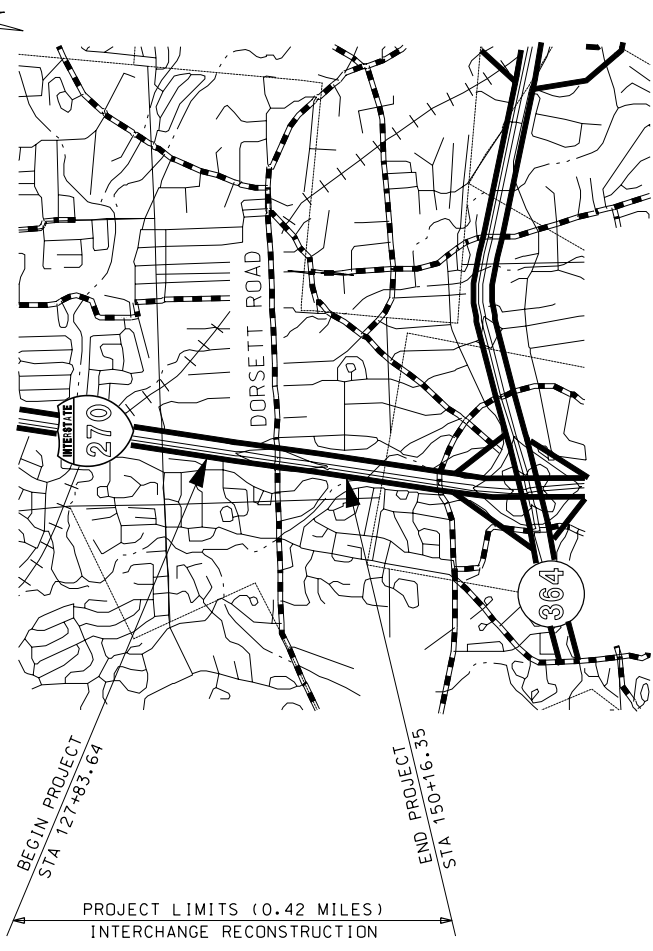
FUNCTIONAL CLASSIFICATION: INTERSTATE & MINOR ARTERIAL

**NO NEW
RIGHT OF WAY
SHALL BE REQUIRED
FOR THIS PROJECT**

CONVENTIONAL SYMBOLS
(USED IN PLANS)

	BUILDINGS AND STRUCTURES
	GUARD RAIL
	CONCRETE RIGHT-OF-WAY MARKER
	STEEL RIGHT-OF-WAY MARKER
	UTILITY SURVEY MARKER
	FIBER OPTICS
	OVERHEAD TELEPHONE
	UNDERGROUND TELEPHONE
	GAS
	WATER
	MANHOLE
	FIRE HYDRANT
	WATER VALVE
	WATER METER
	DROP INLET
	DITCH BLOCK
	GROUND MOUNTED SIGN
	LIGHT POLE
	H-FRAME POWER POLE
	TELEPHONE PEDESTAL
	FENCE
	CHAIN LINK
	MOVABLE WIRE GATE POST
	BENCHMARK

NOTE: DASHED OR OPEN SYMBOLS INDICATE EXISTING FEATURES



INDEX OF SHEETS

DESCRIPTION	SHEET NUMBER
TITLE SHEET	1
TYPICAL SECTIONS (TS) (5 SHEETS)	2
QUANTITIES (QU) (10 SHEETS)	3
PLAN-PROFILE (PP)	4-16
RIGHT OF WAY (RW)	XX-XX
REFERENCE POINTS (RP)	17
COORDINATE POINTS (CP)	17A-17B
SPECIAL SHEETS (SS)	18-25
TRAFFIC CONTROL SHEETS (TC)	26-44
EROSION CONTROL SHEETS (EC)	45
LIGHTING (LT)	46
SIGNALS (SG)	47-55
SIGNING (SN)	56-68
PAVEMENT MARKING (PM)	69-70
CULVERT SECTIONS (CS)	71-78
AESTHETIC ENHANCEMENTS (AE)	E1-E54
BRIDGE DRAWINGS (B)	
AT659	XX-XX
AT659T	XX-XX
AT703	XX-XX
AT704	XX-XX
CROSS SECTIONS (XS)	1-66

LENGTH OF PROJECT

BEGINNING OF PROJECT I-270	STA. 127+83.64
END OF PROJECT I-270	STA. 150+16.35
APPARENT LENGTH I-270	2232.71 FEET
EQUATIONS AND EXCEPTIONS:	NONE
NET LENGTH OF PROJECT I-270	2232.71 FEET
STATE LENGTH I-270	0.42 MILES
TOTAL STATE LENGTH	0.42 MILES

STATE OF MISSOURI
DEPARTMENT OF TRANSPORTATION
DIVISION OF HIGHWAYS

DATE PREPARED: 4/8/2009
ROUTE: I-270
PROJECT NO.: 1
COUNTY: ST. LOUIS
JOB NO.: J611830B
CONTRACT ID:

105 WEST CAPITOL
JEFFERSON CITY, MO 65102
1-888-ASK-MODOT (1-888-275-6963)

MISSOURI HIGHWAYS AND TRANSPORTATION COMMISSION

DATE: _____

DESCRIPTION: _____

NOTE: STORM WATER MANAGEMENT FOR THIS PROJECT IS PER THE MODNR/MODOT PERMIT NO. MO-RO40063 DATED AUGUST 4, 2006
ALL STRUCTURES AND PIPES ARE MODOT OWNED UNLESS OTHERWISE NOTED

MSD P-28558-00

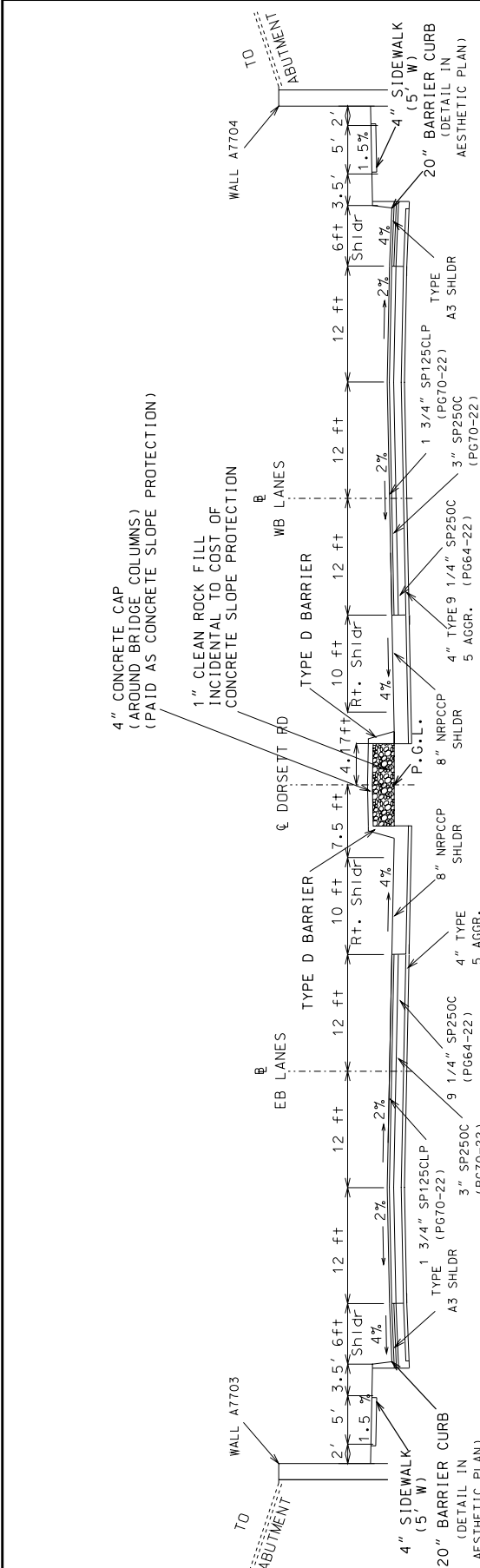


DATE PREPARED: 4/8/2009
 DATE: 4/8/2009
 STATE: MO
 COUNTY: 2
 PROJECT NO.:
 BRIDGE NO.:
 CONTRACT ID.:
 JOB NO.: J611830B
 SHEET NO.: 2
 SHEET TITLE: ST. LOUIS

DATE	DESCRIPTION

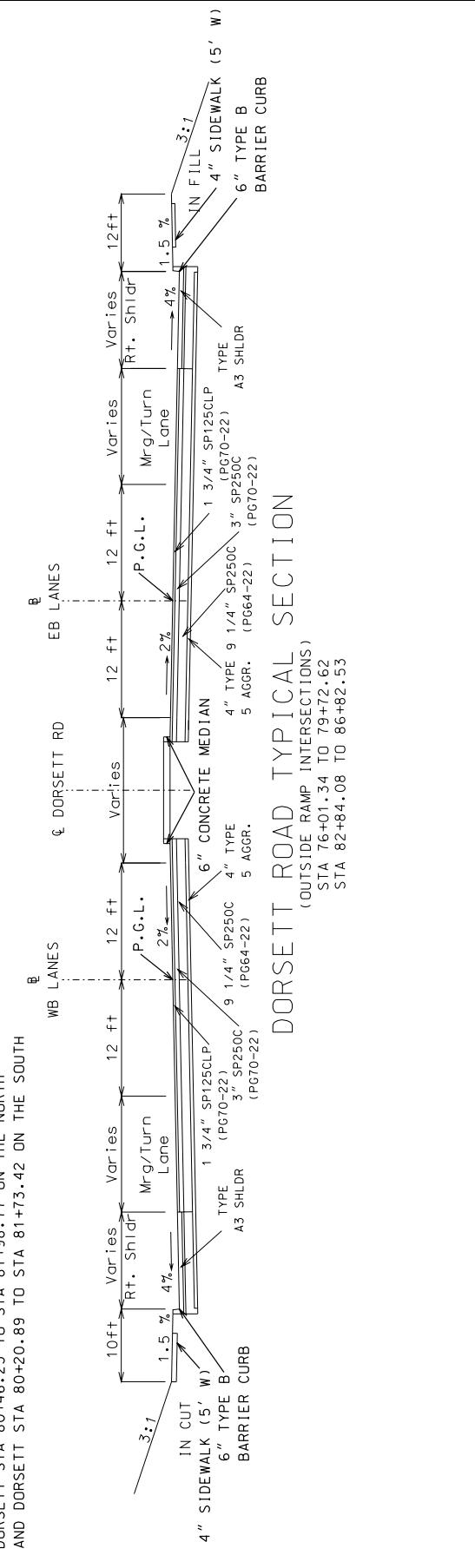
MISSOURI HIGHWAYS AND TRANSPORTATION COMMISSION
 105 WEST CAPITOL JEFFERSON CITY, MO 65102
 1-888-ASK-MODOT (1-888-275-6636)

TYPICAL SECTIONS
 SHEET 2 OF 5



DORSETT ROAD TYPICAL SECTION
 (UNDER BRIDGE)
 STA 79+72.62 TO STA 82+84.08

NOTE: SIDEWALKS UNDER BRIDGE
 DETAILED IN ENHANCEMENT PLANS FROM
 DORSETT STA 80+46.23 TO STA 81+98.77 ON THE NORTH
 AND DORSETT STA 80+20.89 TO STA 81+73.42 ON THE SOUTH



DORSETT ROAD TYPICAL SECTION
 (OUTSIDE RAMP INTERSECTIONS)
 STA 76+01.34 TO STA 79+72.62

NOTE: SIDEWALKS UNDER BRIDGE
 DETAILED IN ENHANCEMENT PLANS FROM
 DORSETT STA 80+46.23 TO STA 81+98.77 ON THE NORTH
 AND DORSETT STA 80+20.89 TO STA 81+73.42 ON THE SOUTH


TYPICAL SECTIONS
 SHEET 2 OF 5

DORSETT ROAD ALTERNATE A

NOT TO SCALE

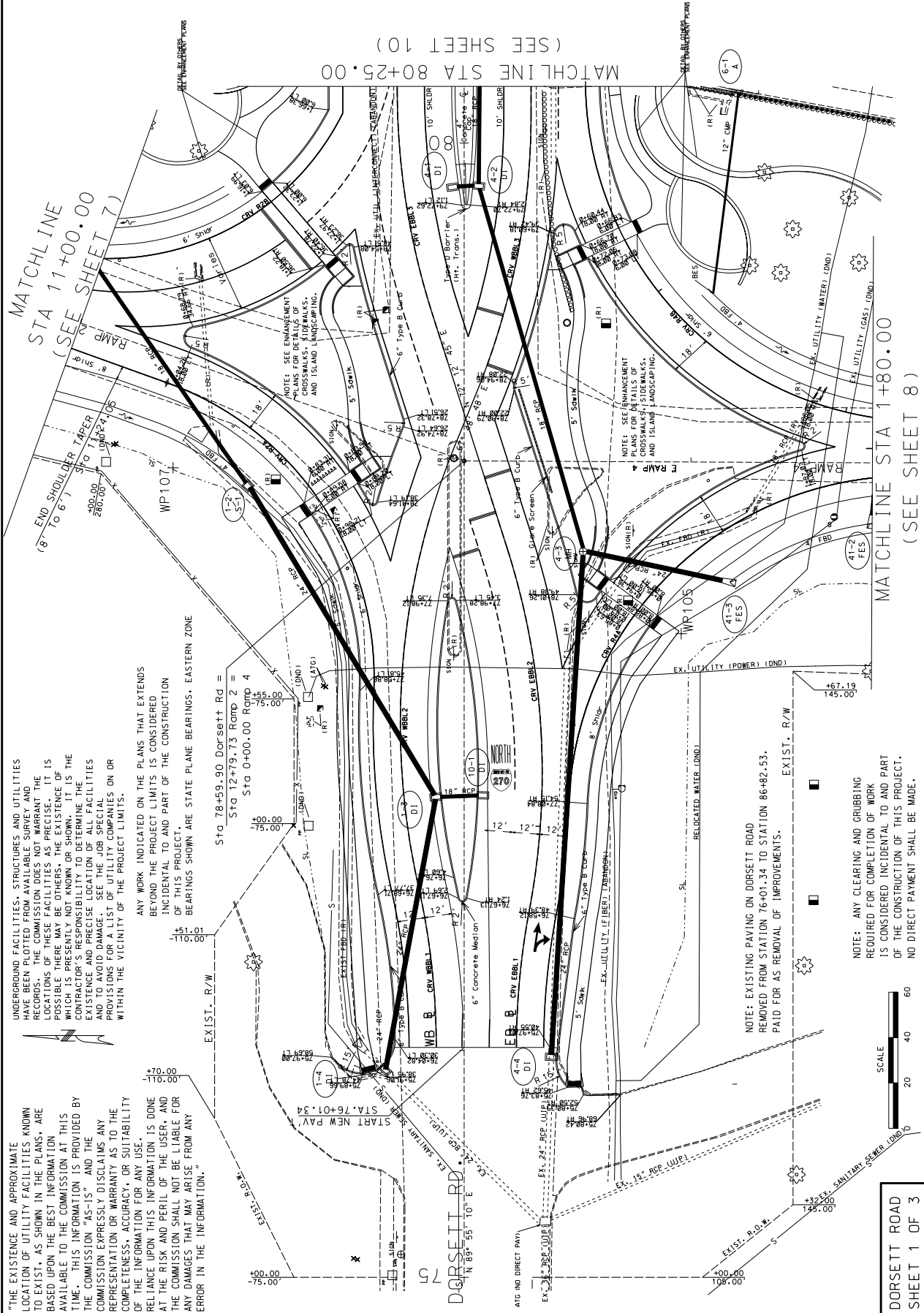
STATE OF MISSOURI DEPARTMENT OF TRANSPORTATION DIVISION OF HIGHWAYS	DATE PREPARED 4/8/2009	ROUTE 1-270	STATE MO	PROJECT NO. 4	DATE 4/8/2009
ST. LOUIS JOB NO. J611830B	CONTRACT ID.	COUNTY G	BRIDGE NO.	BRIDGE NO.	BRIDGE NO.
DESCRIPTION	DATE	IF A SEAL IS PRESENT ON THIS SHEET IT HAS BEEN ELECTRONICALLY SEALED AND DATED.			

MISSOURI HIGHWAYS AND TRANSPORTATION COMMISSION



105 WEST CAPITOL
JEFFERSON CITY, MO 65102
1-888-ASK-MDOT (1-888-275-6696)

PLAN SHEETS
DORSETT ROAD 1 OF 3



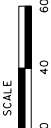
UNDERGROUND FACILITIES, STRUCTURES AND UTILITIES HAVE BEEN PLOTTED FROM AVAILABLE SURVEY AND RECORDS. THE COMMISSION DOES NOT WARRANT THE LOCATIONS OF THESE FACILITIES AS PRECISE. IT IS POSSIBLE THERE MAY BE OTHERS, THE EXISTENCE OF WHICH IS PRESENTLY NOT KNOWN OR SHOWN. THE EXISTENCE AND PRECISE LOCATION OF FACILITIES AND TO AVOID DAMAGE. SEE THE JOB SPECIAL PROVISIONS FOR A LIST OF UTILITY COMPANIES OR WITHIN THE VICINITY OF THE PROJECT LIMITS.

ANY WORK INDICATED ON THE PLANS THAT EXTENDS BEYOND THE PROJECT LIMITS IS CONSIDERED INCIDENTAL TO AND PART OF THE CONSTRUCTION OF THIS PROJECT. BEARINGS SHOWN ARE STATE PLANE BEARINGS. EASTERN ZONE

"THE EXISTENCE AND APPROXIMATE LOCATION OF UTILITY FACILITIES KNOWN TO EXIST, AS SHOWN IN THE PLANS, ARE BASED UPON THE BEST INFORMATION AVAILABLE TO THE COMMISSION AT THIS TIME. THIS INFORMATION IS PROVIDED BY THE COMMISSION "AS-IS" AND THE COMMISSION EXPRESSLY DISCLAIMS ANY REPRESENTATION OR WARRANTY AS TO THE COMPLETENESS, ACCURACY, OR SUITABILITY OF THE INFORMATION FOR ANY USE. RELIANCE UPON THIS INFORMATION IS DONE AT THE RISK AND PERIL OF THE USER, AND THE COMMISSION SHALL NOT BE LIABLE FOR ANY DAMAGES THAT MAY ARISE FROM ANY ERROR IN THE INFORMATION."

NOTE: EXISTING PAVING ON DORSETT ROAD REMOVED FROM STATION 76+01.34 TO STATION 86+82.53. PAID FOR AS REMOVAL OF IMPROVEMENTS.


NOTE: ANY CLEARING AND GRUBBING REQUIRED FOR COMPLETION OF WORK IS CONSIDERED INCIDENTAL TO AND PART OF THE CONSTRUCTION OF THIS PROJECT. NO DIRECT PAYMENT SHALL BE MADE.



DORSETT ROAD
SHEET 1 OF 3

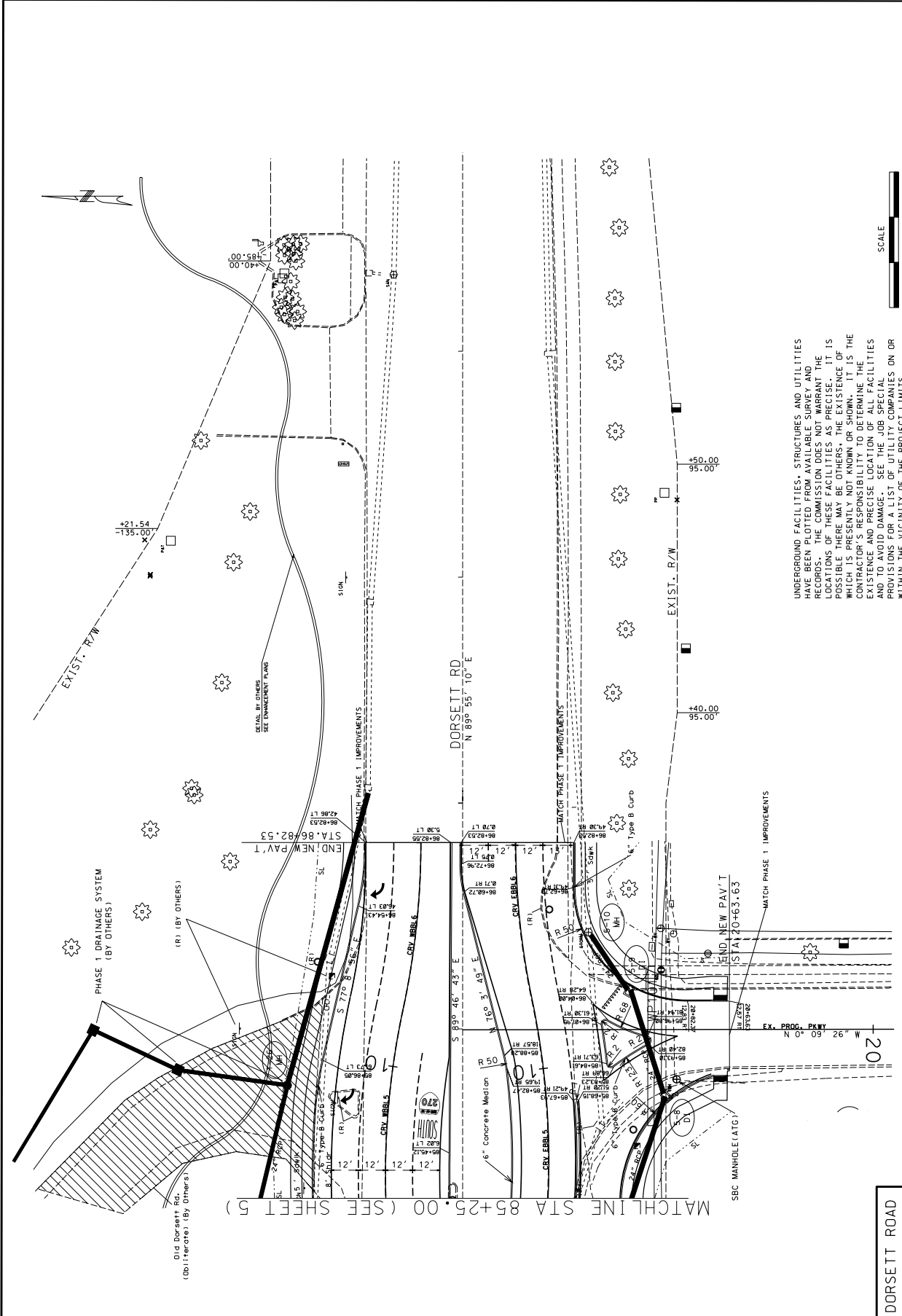
DATE PREPARED	4/8/2009
STATE	MO
ROUTE	I-270
DISTRICT	0
SHEET NO.	0
COUNTY	ST. LOUIS
JOB NO.	J6118308
CONTRACT ID.	
PROJECT NO.	
BRIDGE NO.	
DESCRIPTION	
DATE	

MISSOURI HIGHWAYS AND TRANSPORTATION COMMISSION

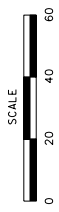


105 WEST CAPITOL
JEFFERSON CITY, MO 65102
1-888-4SK-MOTD (1-888-275-6693)

DORSETT ROAD 3 OF 3
PLAN SHEETS



UNDERGROUND FACILITIES, STRUCTURES AND UTILITIES HAVE BEEN PLOTTED FROM AVAILABLE SURVEY AND RECORDS. THE COMMISSION DOES NOT WARRANT THE POSSESSION OF THESE FACILITIES AS PRECISE. IT IS POSSIBLE THERE MAY BE OTHERS. THE EXISTENCE OF WHICH IS PRESENTLY NOT KNOWN OR SHOWN. IT IS THE RESPONSIBILITY OF THE CONTRACTOR TO DETERMINE THE EXISTENCE AND PRECISE LOCATION OF FACILITIES AND TO AVOID DAMAGE. SEE THE JOB SPECIAL PROVISIONS FOR A LIST OF UTILITY COMPANIES ON OR WITHIN THE VICINITY OF THE PROJECT LIMITS.



DORSETT ROAD
SHEET 3 OF 3

IF A SEAL IS PRESENT ON THIS SHEET IT HAS BEEN ELECTRONICALLY SEALED AND DATED.

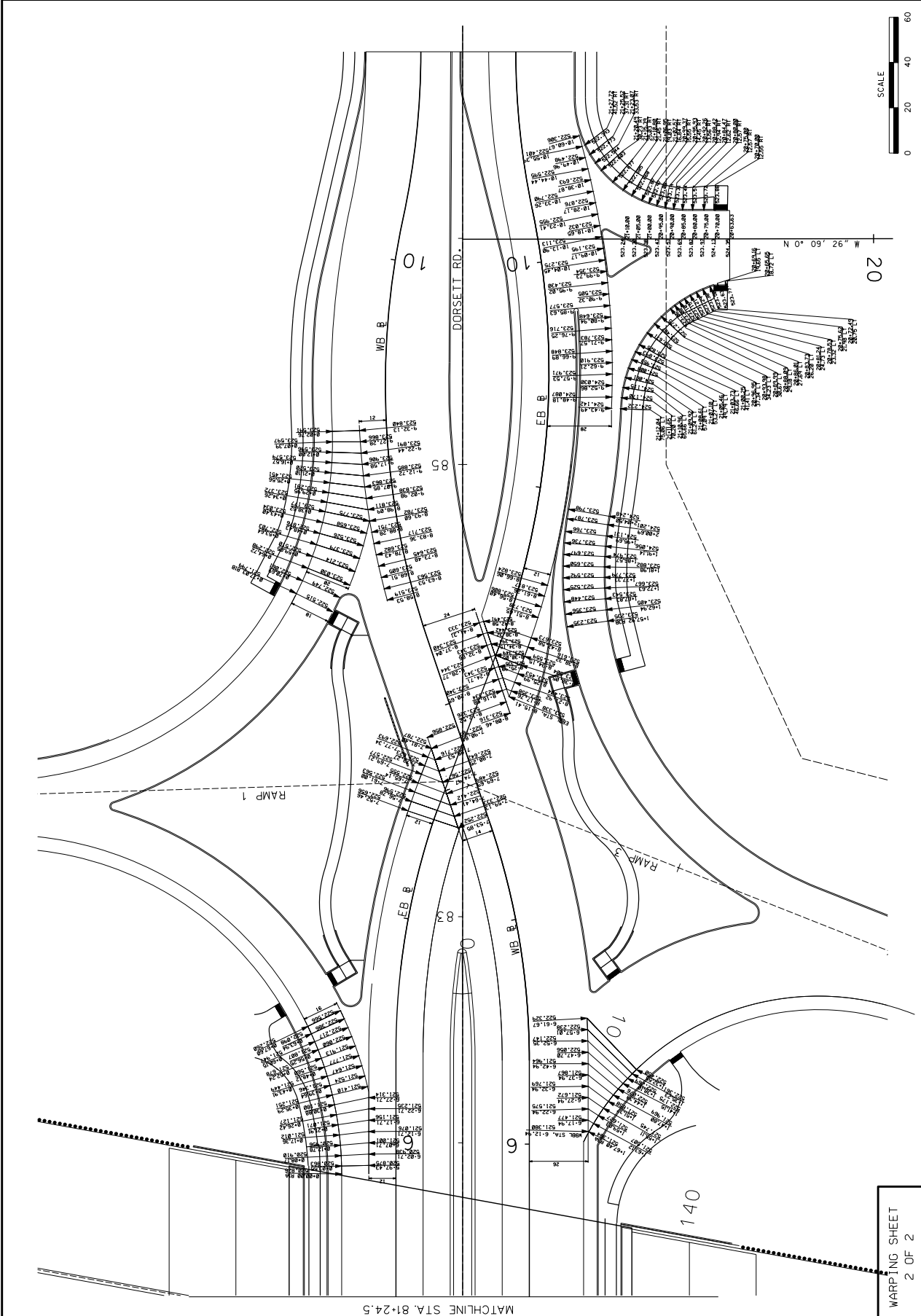


DATE PREPARED: 4/8/2009
 STATE: MO
 COUNTY: ST. LOUIS
 PROJECT NO.: JG 11803B
 BRIDGE NO.:
 CONTRACT ID.:
 JOB NO.: JG 11803B
 DISTRICT: 6

DATE	DESCRIPTION

MISSOURI HIGHWAYS AND TRANSPORTATION COMMISSION
 105 WEST CAPITOL
 JEFFERSON CITY, MO 65102
 1-888-ASK-MODOT (1-888-275-6963)

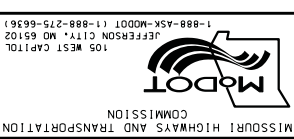
SPECIAL SHEET
 WARPING SHEET 2 OF 2



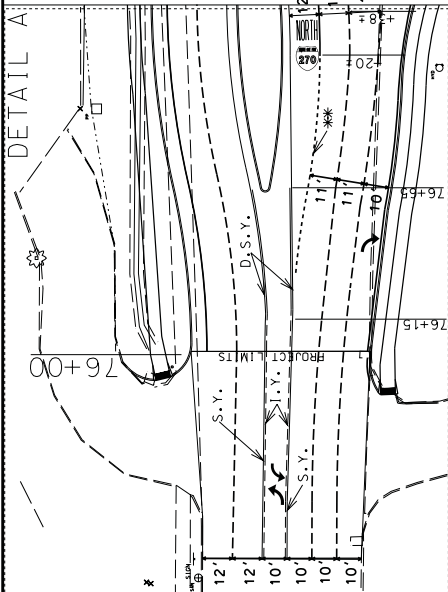
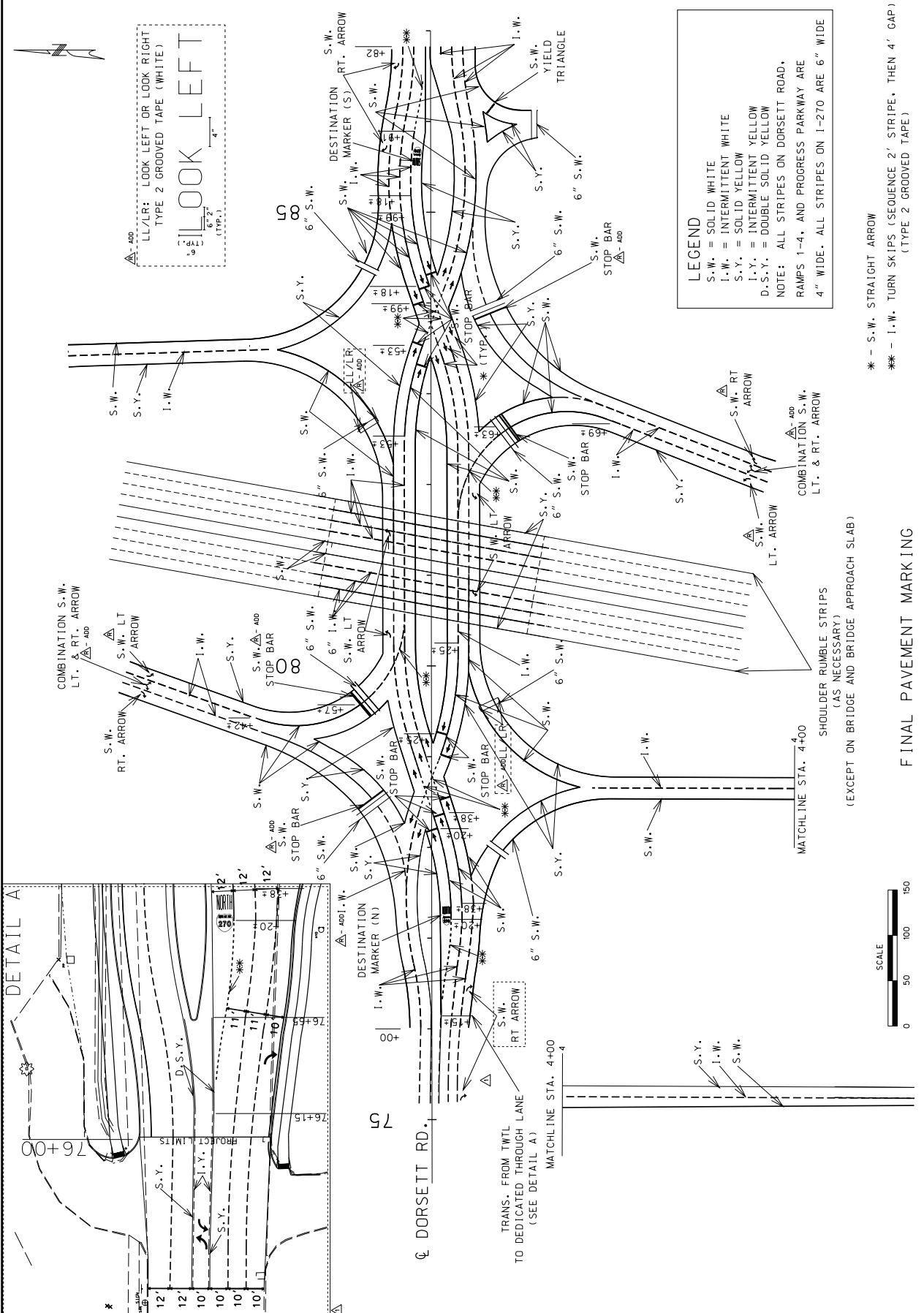
MATCHLINE STA. 81+24.5

WARPING SHEET
 2 OF 2

MISSOURI HIGHWAYS AND TRANSPORTATION COMMISSION
 105 WEST CAPITOL JEFFERSON CITY, MO 65102
 1-888-ASK-MODOT (1-888-275-6636)



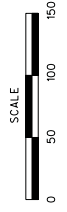
PAVEMENT MARKING PLAN



LEGEND
 S.W. = SOLID WHITE
 I.W. = INTERMITTENT WHITE
 S.Y. = SOLID YELLOW
 I.Y. = INTERMITTENT YELLOW
 D.S.Y. = DOUBLE SOLID YELLOW
 NOTE: ALL STRIPES ON DORSETT ROAD, RAMP 1-4, AND PROGRESS PARKWAY ARE 4" WIDE. ALL STRIPES ON I-270 ARE 6" WIDE

* - S.W. STRAIGHT ARROW
 ** - I.W. TURN SKIPS (SEQUENCE 2' STRIPE, THEN 4' GAP) (TYPE 2 GROOVED TAPE)

SHOULDER RUMBLE STRIPS (AS NECESSARY)
 (EXCEPT ON BRIDGE AND BRIDGE APPROACH SLAB)



FINAL PAVEMENT MARKING

DATE PREPARED: 2/1/2010
 STATE: MO
 PROJECT NO.: J611830B
 COUNTY: ST. LOUIS
 CONTRACT ID:
 BRIDGE NO.:
 DESCRIPTION:
 DATE:

IF A SEAL IS PRESENT ON THIS SHEET IT HAS BEEN ELECTRONICALLY SEALED AND DATED.