

Figure: 616.6.87.1 Temporary Rumble Strip (TRS) Placement

SPEED	SIGN SPACING (ft.)		TAPER LENGTH (ft.)		OPTIONAL	CHANNELIZER SPACING (ft.)	
	Undivided (S)	Divided (S)	Shoulder (T1)	Lane (T2)	BUFFER LENGTH (ft.) (B)	Tapers	Buffer/ Work Areas
0-35	200	200	Review appropriate typical applications for signs, sign spacing, taper length, buffer length, channelizer spacing, TMAs, etc.				
40-45	350	500					
50-55	500	1000					
60-70	1000	SA - 1000 SB - 1500 SC - 2640					

NOTES:

See EPG 616.6.87 Temporary Rumble Strips for rumble strip guidance and locations.

Flagging operation can include human flaggers, automated flagger assistance devices, portable signal flagging devices and traffic control signals operations.

Temporary rumble strips shall be orange in color.

(1) Rumble set distance from a sign (flagger symbol sign, signal ahead, merge, etc. signs) as shown in the following figures.

(2) A set of temporary long-term rumble strips shall consist of 5 strips separated at 10-12 ft. on center.

If the project is a long-term stationary project with intermediate construction activities impacting traffic, such as lane restrictions, additional temporary rumble strips should be evaluated for use.

Temporary Long-term Rumble Strips		
Permanent Posted Speed (MPH)	Distance (ft.) (1)	Spacing (ft.) (2)
0 - 45 (Optional)	120	10 - 12
50 - 55	160	10 - 12
60 - 70	200	10 - 12

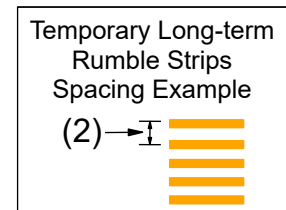


Figure: 616.6.87.1 Temporary Rumble Strip Placement using Traffic Control Signals (long-term stationary)

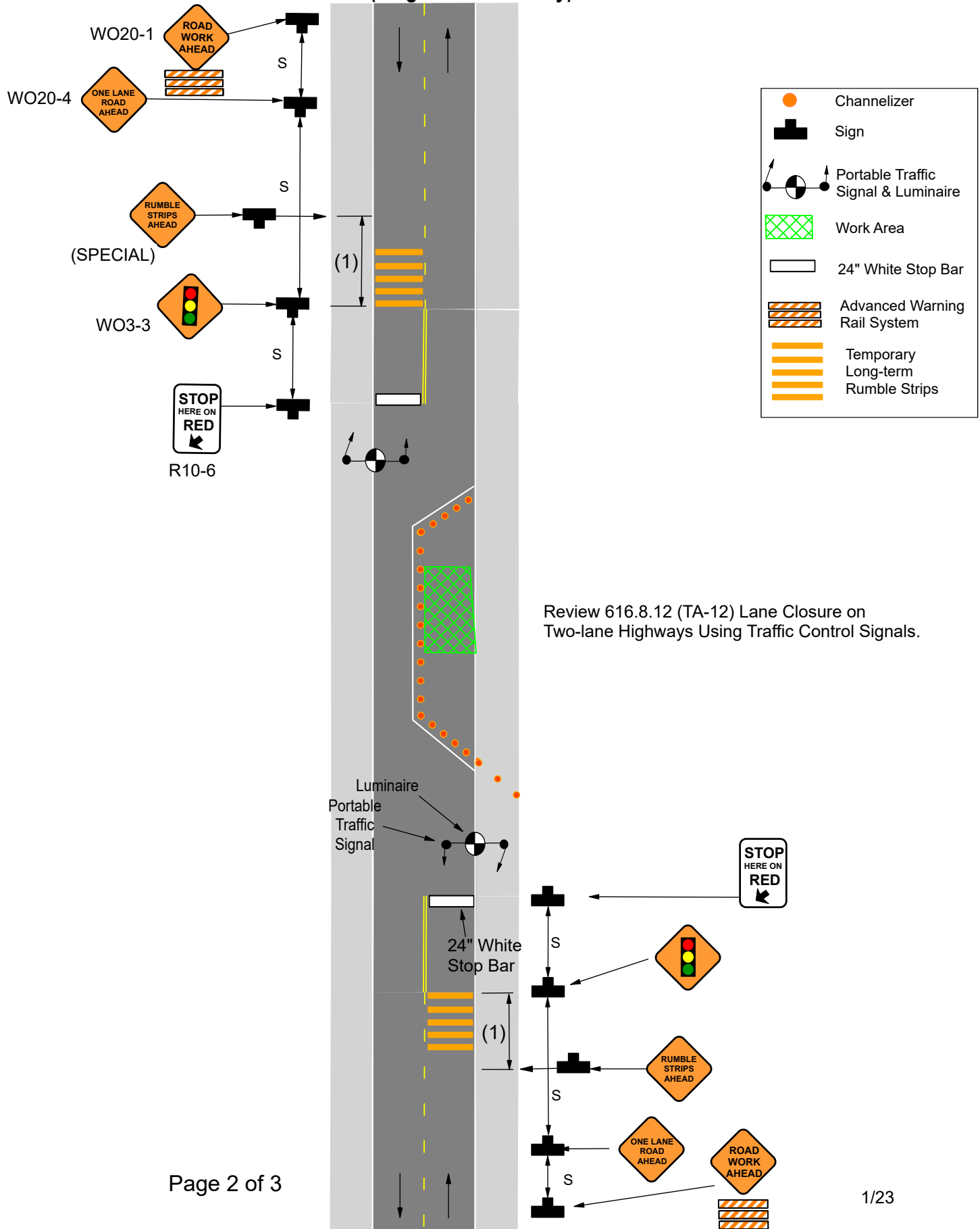


Figure: 616.6.87.1 Rumble Strip Placement on a Divided Highway (long-term stationary)

