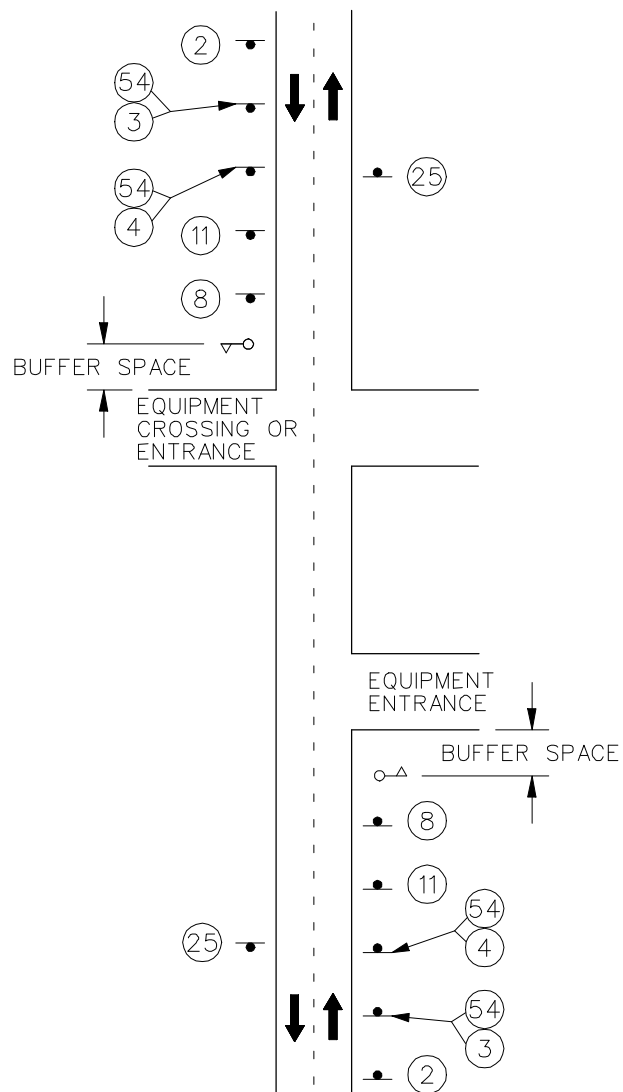
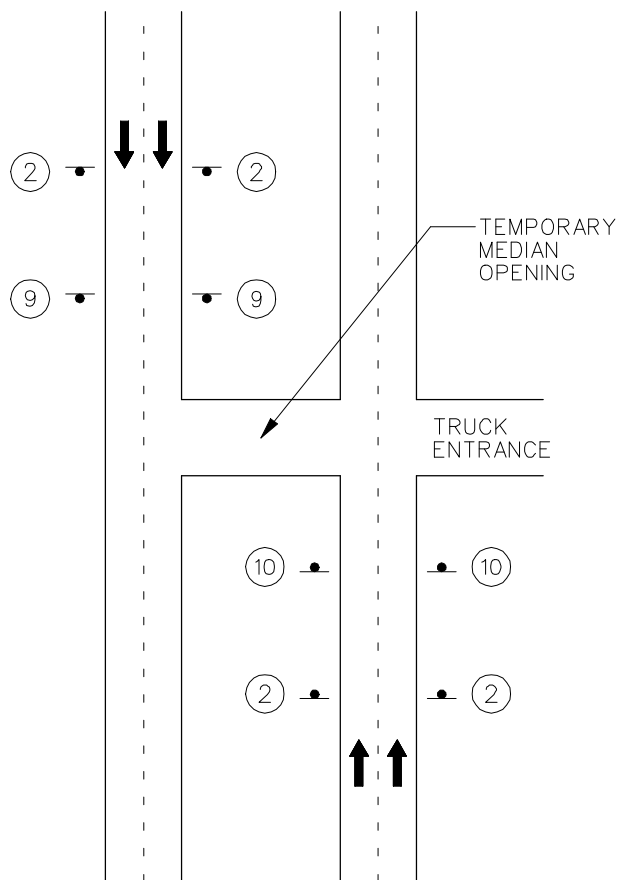


Truck and Equipment Crossing or Entrance



NOTES:

- ON NON-DIVIDED HIGHWAYS, PROVIDE SIGNS ONLY ON THE RIGHT SIDE.
- APPLICABLE ONLY WHEN LICENSED VEHICLES ARE ENTERING OR CROSSING TRAFFIC WITHOUT THE AID OF A FLAGGER.
- SIGN (2) NOT NEEDED IF CROSSING OR ENTRANCE IS LOCATED WITHIN THE LIMITS OF AN ACTIVITY AREA WHERE ANOTHER SIGN (2) IS ALREADY USED.
- SEE FIGURE 8-04.1 FOR SIGN SPACING.
- SEE FIGURE 8-04.5 SHEET 3 OF 3 FOR TEMPORARY MEDIAN OPENING DETAIL.

NOTES:

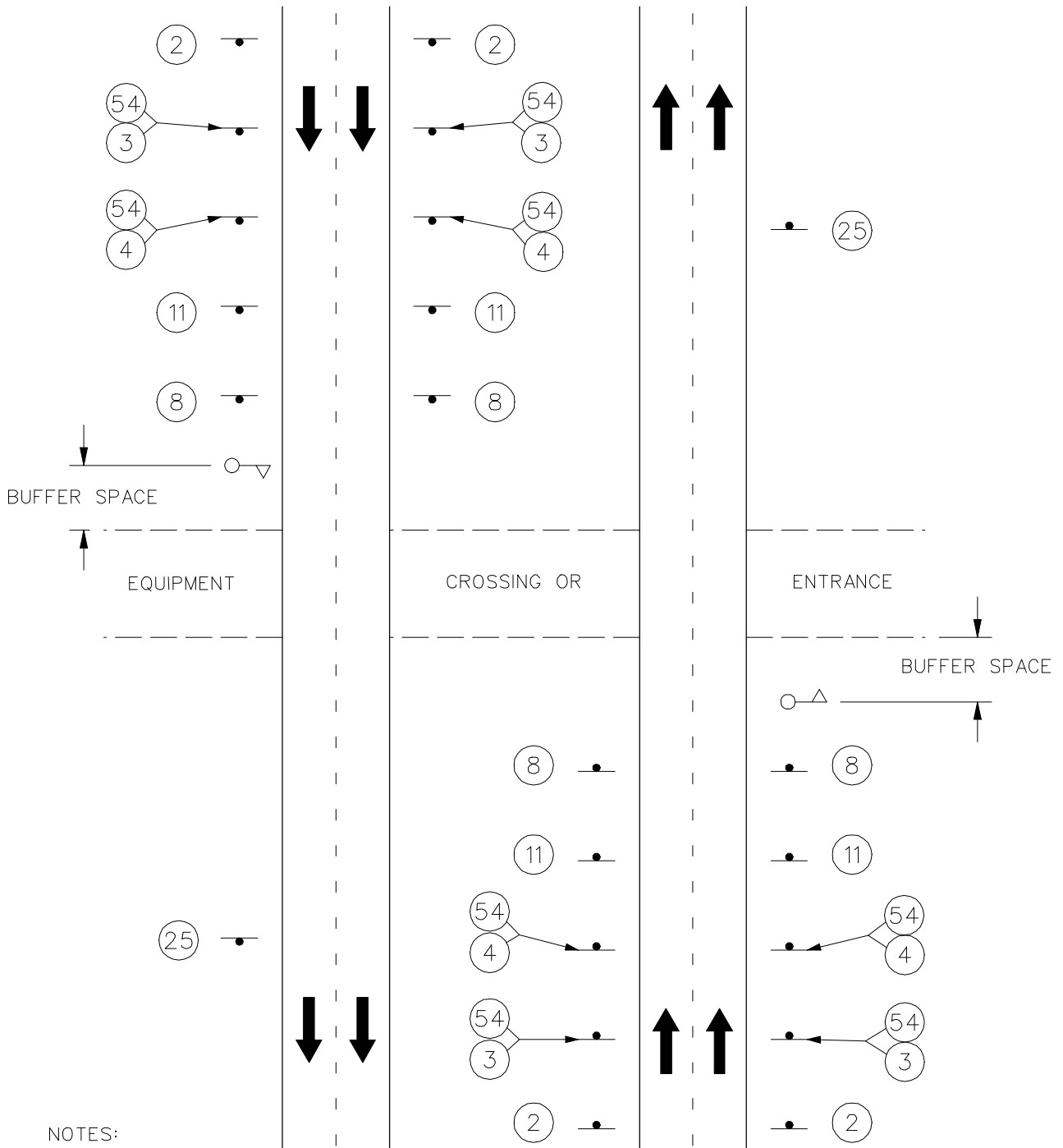
- SIGN (2) NOT NEEDED IF CROSSING OR ENTRANCE IS LOCATED WITHIN THE LIMITS OF AN ACTIVITY AREA WHERE ANOTHER SIGN (2) IS ALREADY USED.
- SIGNS (3), (4), (25) AND (54) NOT NEEDED IF CROSSING OR ENTRANCE IS LOCATED WITHIN THE LIMITS OF AN ACTIVITY AREA WHERE AN APPROPRIATE SPEED LIMIT, EITHER NORMAL OR REDUCED, IS ESTABLISHED.
- SEE FIGURE 8-04.1 FOR SIGN SPACING.

Truck Crossing or Entrance

Equipment Crossing or Entrance on Undivided Highway

Equipment Crossing or Entrance on Divided Highway

Truck and Equipment Crossing or Entrance



NOTES:

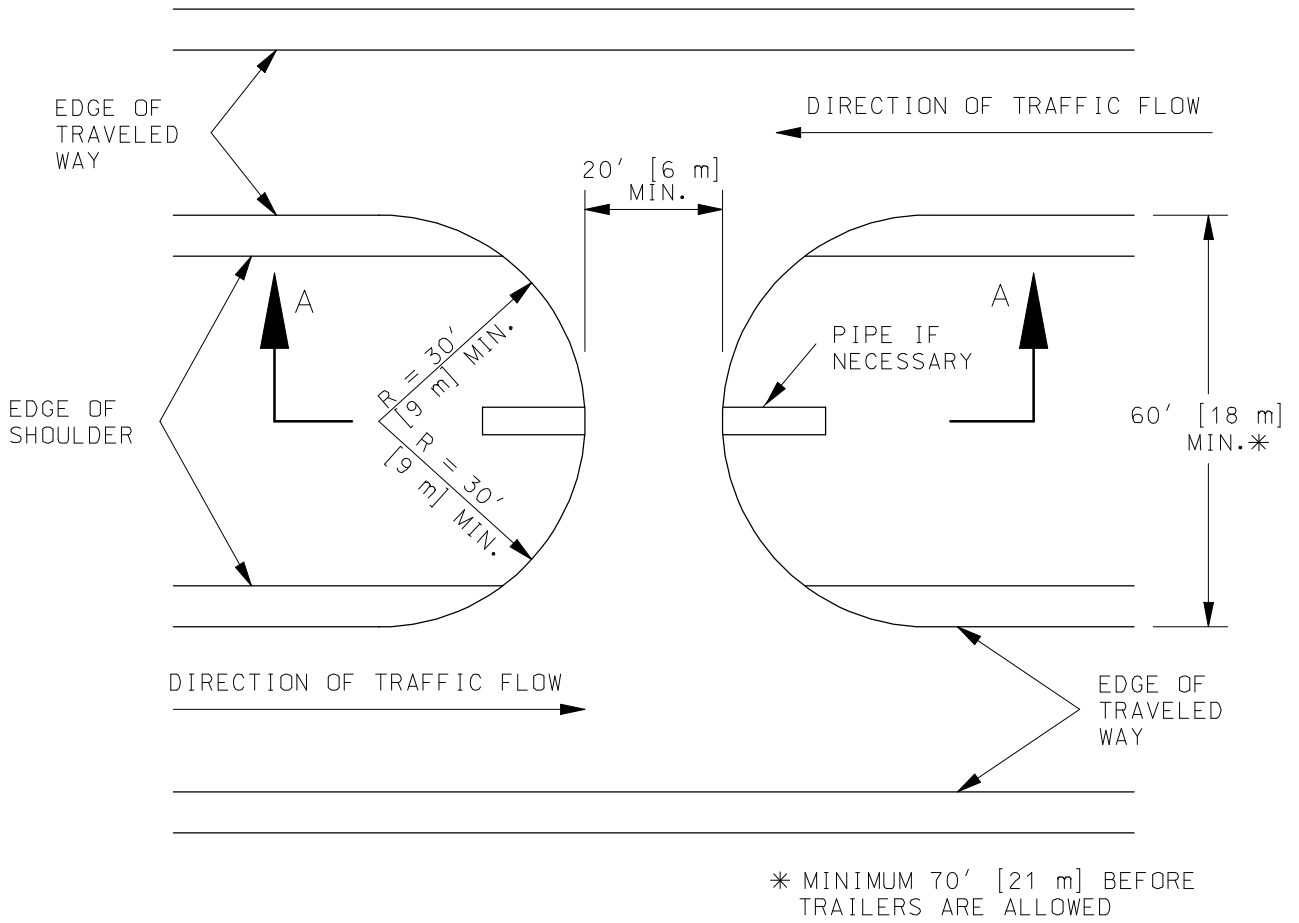
SIGN (2) NOT NEEDED IF ENTRANCE IS LOCATED WITHIN THE LIMITS OF AN ACTIVITY AREA WHERE ANOTHER SIGN (2) IS ALREADY USED.

SIGNS (3), (4), (25) AND (54) NOT NEEDED IF CROSSING OR ENTRANCE IS LOCATED WITHIN THE LIMITS OF AN ACTIVITY AREA WHERE AN APPROPRIATE SPEED LIMIT, EITHER NORMAL OR REDUCED, IS ESTABLISHED.

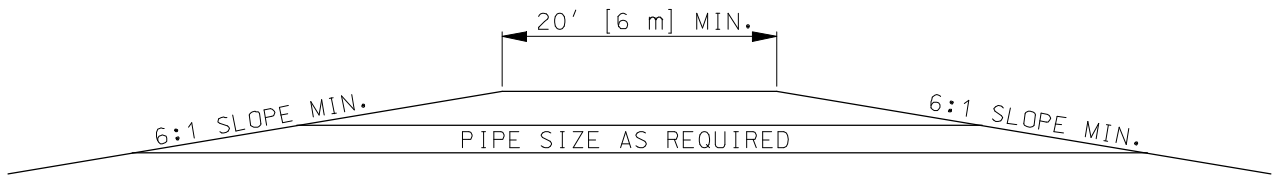
SEE FIGURE 8-04.1 FOR SIGN SPACING.

SEE FIGURE 8-04.5 SHEET 3 OF 3 FOR TEMPORARY MEDIAN OPENING DETAIL.

Temporary Median Opening Truck and Equipment Crossing or Entrance



PLAN



SECTION A-A