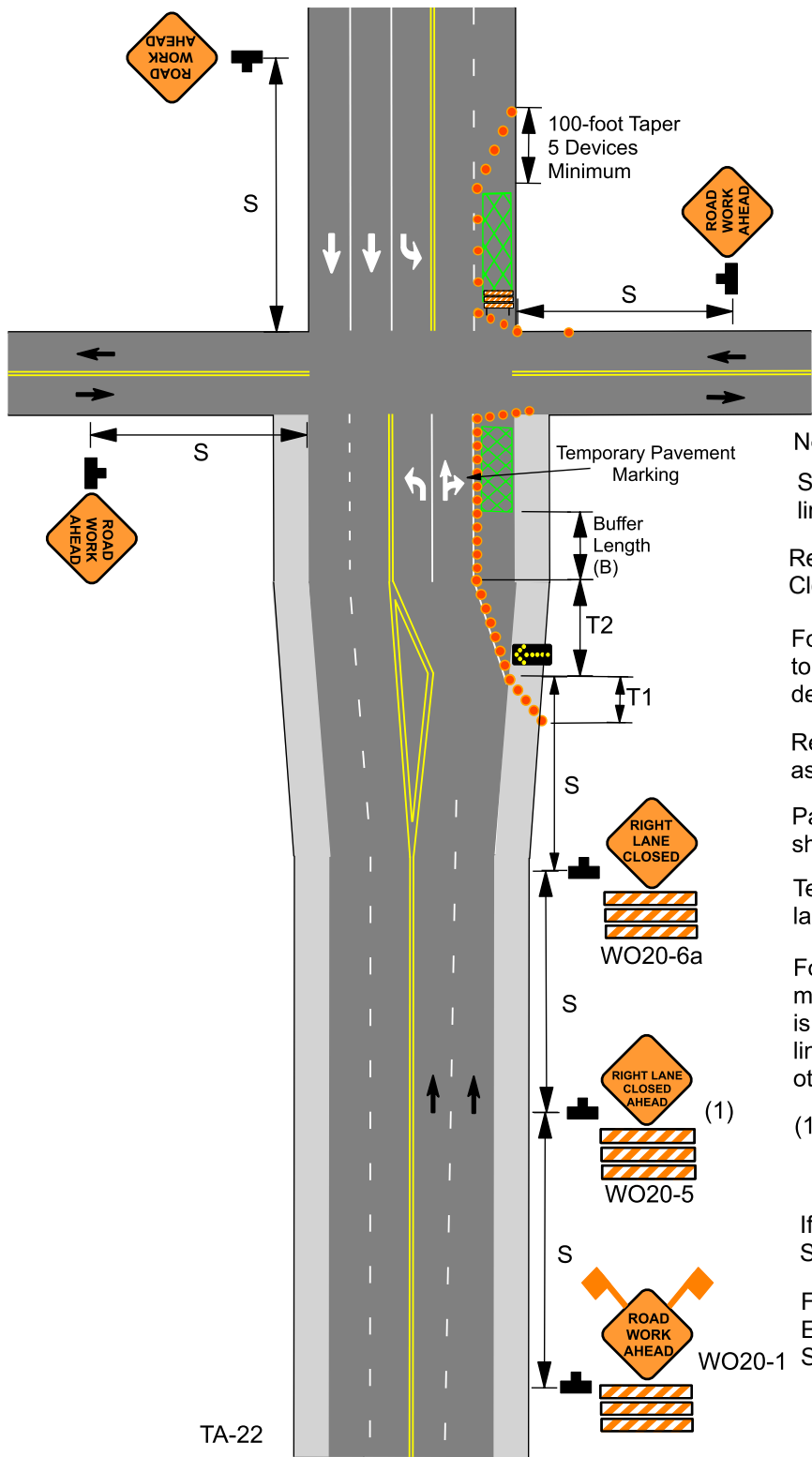


616.8.22 (TA-22) Right Lane Closure at Intersection Work on Near or Far Side - DE/CM

SPEED Permanent Posted (mph)	SIGN SPACING (ft.)		TAPER LENGTH (ft.)		OPTIONAL BUFFER LENGTH (ft.) (B)	CHANNELIZER SPACING (ft.)	
	Undivided (S)	Divided (S)	Shoulder (1) (T1)	Lane (2) (T2)		Tapers	Buffer/ Work Areas
0-35	200	-	70	245	280	35	40
40-45	350	-	150	540	400	40	80
50-55	500	-	185	660	560	50	80
60-70	1000	-	235	840	840	60	120

1 Shoulder taper length based on 10 ft. (standard shoulder width) offset. 2. Lane taper length based on 12 ft. (standard lane width) offset.



	Work Area
	Sign
	Type 3 Barricades
	Channelizer
	Arrow Panel
	ADVANCED WARNING RAIL SYSTEM

Notes:

See EPG 616.12 Work Zone Speed Limits for speed limit guidelines.

Review typical application 616.8.22a (TA-22a) Lane Closure of Right Lane on Far Side of Intersection.

For signalized intersections, adjustments may need to be made to signal phasing, timing, indications or detector settings.

Remove and/or modify existing pavement marking as needed.

Pavement marking and barricades optional for short term operations.

Temporary pavement marking required with long term lane closures.

For short term operation, where it is not feasible to modify pavement marking, a 10-foot device spacing is used where traffic is guided across double yellow lines or other conflicting pavement marking. All other spacing are one-half of the spacing.

(1) RIGHT LANE CLOSED AHEAD sign may be omitted in low speed urban areas where there is not sufficient space for the full sign series.

If rumble strips are used, review 616.6.87 RUMBLE STRIPS.

For flags and advance warning rail system, refer to EPG 616.6.2.2 Flags and Advance Warning Rail System.