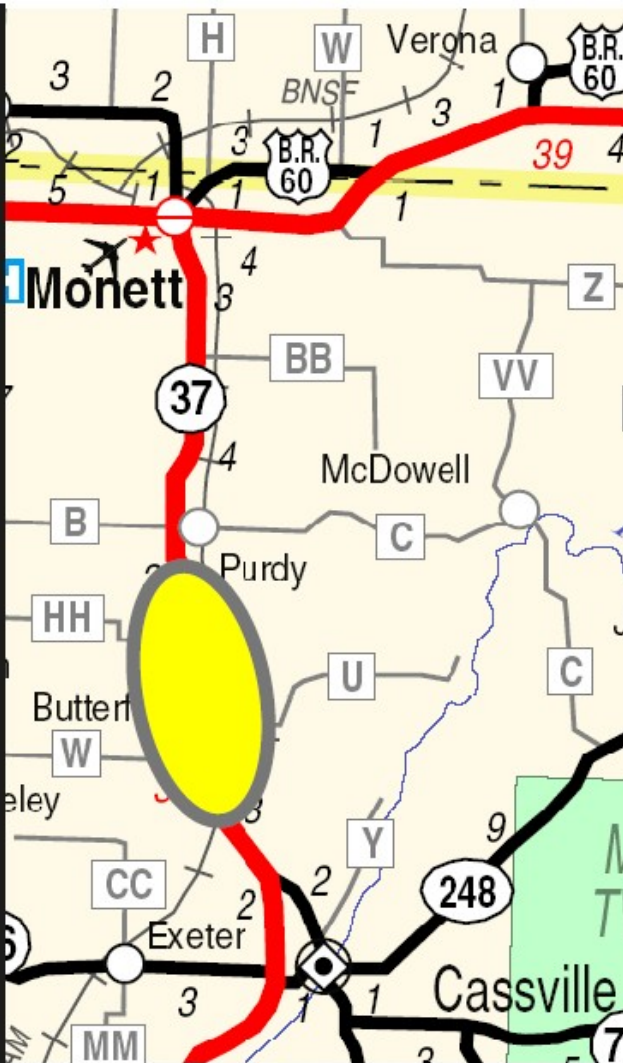


# Barry Co. Rt. 37

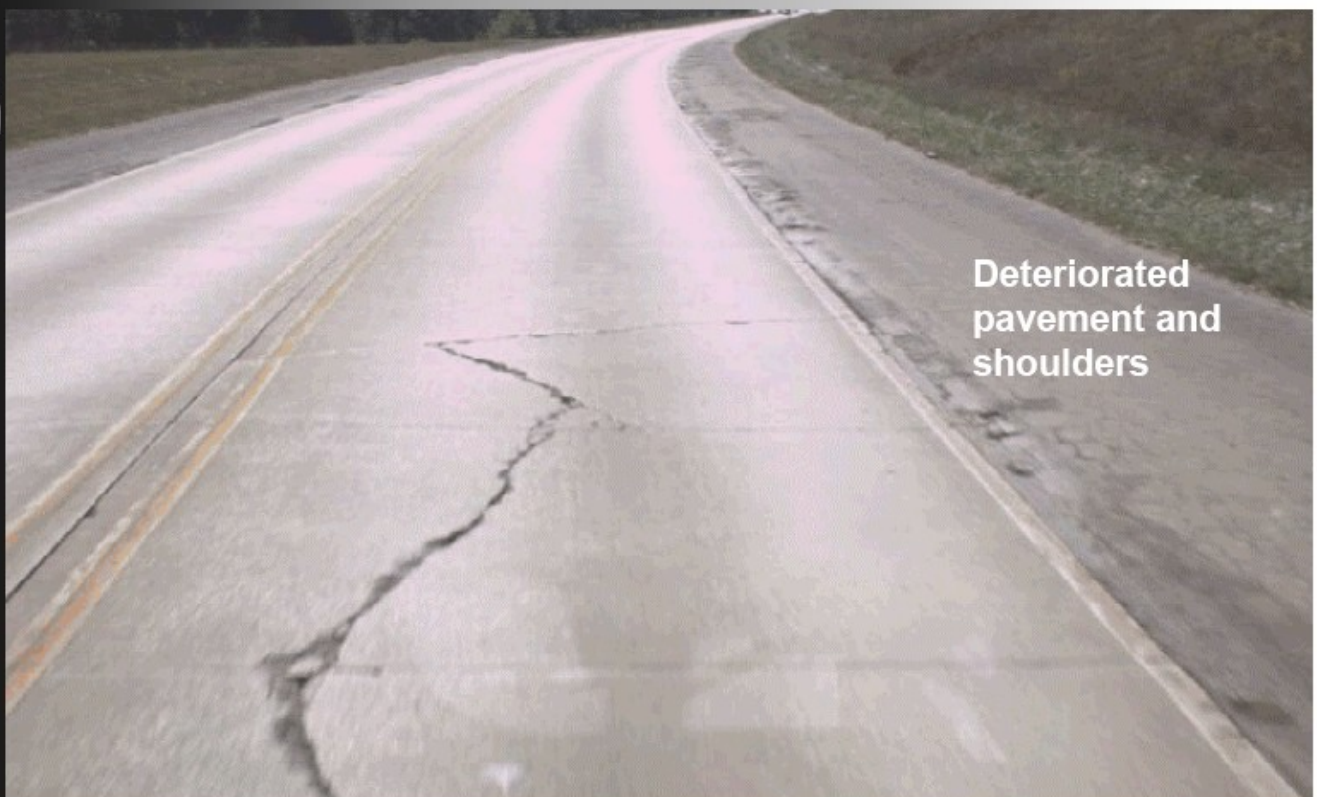


Original Estimate: \$7.4 M  
Redesign: \$2.7 M  
Savings: 64% \$4.3 M

A 5-mile section of concrete pavement on Route 37 between Monett and Cassville is in poor condition. The existing pavement is 24' wide, with 10' seal-coated aggregate shoulders. Along the route, there is an existing railroad overpass with a vertical clearance of 15'-4".

The original plan was to build full-depth shoulders and overlay the roadway with 5-3/4" of asphalt. The 12' shoulders would have handled construction traffic and provided for potential expansion to an alternating three lane section. The plan also included pavement replacement under the railway bridge in order to achieve a standard vertical clearance of 16'-6".

The revised plan calls for 8' shoulders and an asphalt overlay depth of 3-3/4" HMA. The final shoulder thickness will be 5-3/4". Traffic will be handled with lane closures and a one-lane, two-way operation. Pavement under the railway bridge will be overlaid instead of reconstructed, leaving a vertical clearance of approximately 15 feet.



Deteriorated pavement and shoulders