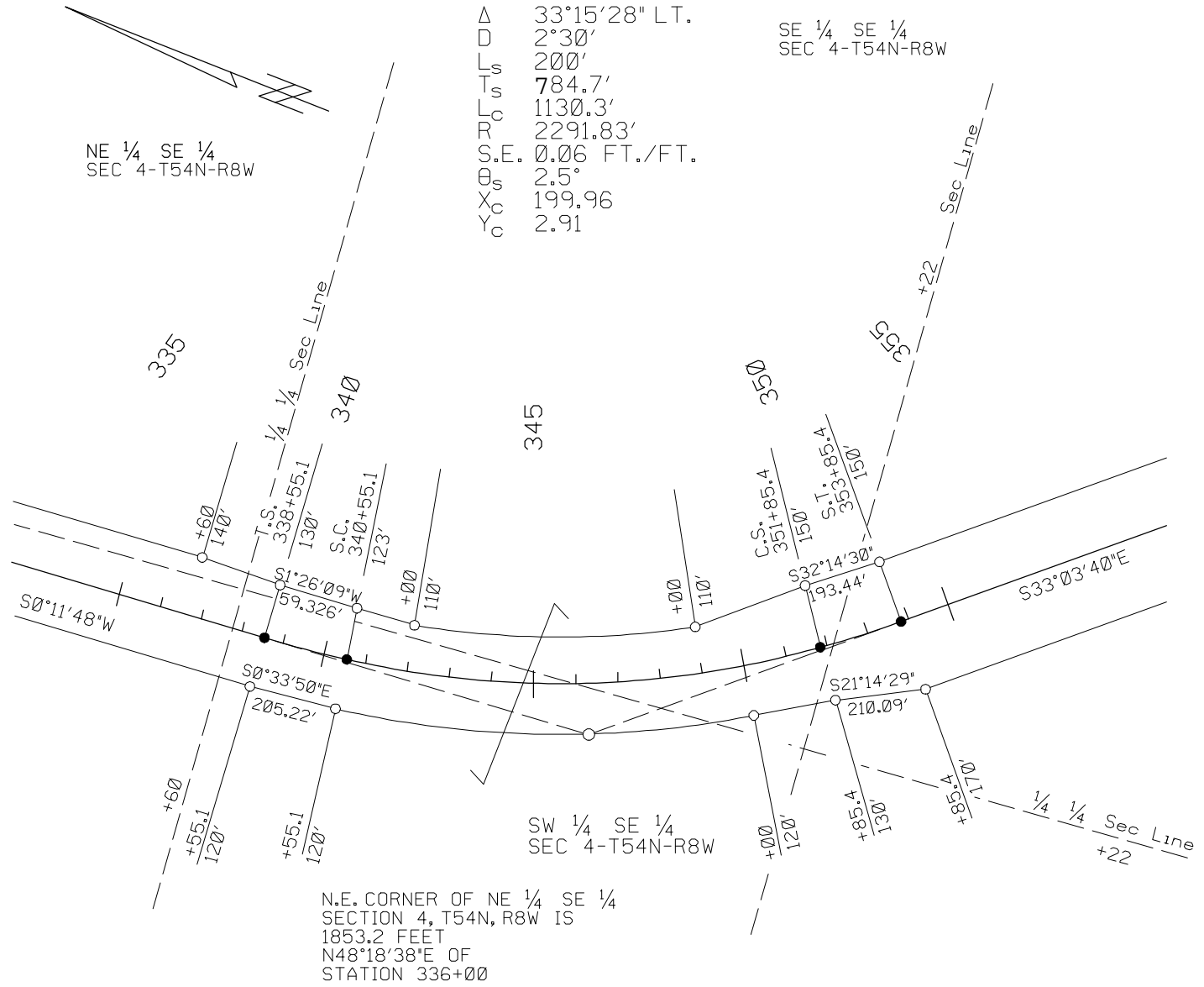


③ STATE OF MISSOURI

P.I. 346+39.7  
 $\Delta$  33°15'28" LT.  
 D 2°30'  
 L<sub>s</sub> 200'  
 T<sub>s</sub> 784.7'  
 L<sub>c</sub> 1130.3'  
 R 2291.83'  
 S.E. 0.06 FT./FT.  
 $\theta_s$  2.5°  
 X<sub>c</sub> 199.96  
 Y<sub>c</sub> 2.91

SE 1/4 SE 1/4  
 SEC 4-T54N-R8W

NE 1/4 SE 1/4  
 SEC 4-T54N-R8W



Right Of Way Marker Locations - Spiral Transitions

③ STATE OF MISSOURI

P.I. 10+558.180  
 $\Delta$  33°15'28" LT.  
 $L_s$  60.960  
 $T_s$  239.177  
 $L_c$  344.515  
 $R_c$  698.55  
 $S.F.$  0.006 m/m  
 $\theta_s$  2.5°  
 $X_c$  60.948  
 $Y_c$  0.887

SE 1/4 SE 1/4  
 SEC 4-T54N-R8W

NE 1/4 SE 1/4  
 SEC 4-T54N-R8W

Begin Project Sta. 335+00.00=

Sta. 10+210.820

End Project Sta. 10+820.422=

Sta. 355+00.00

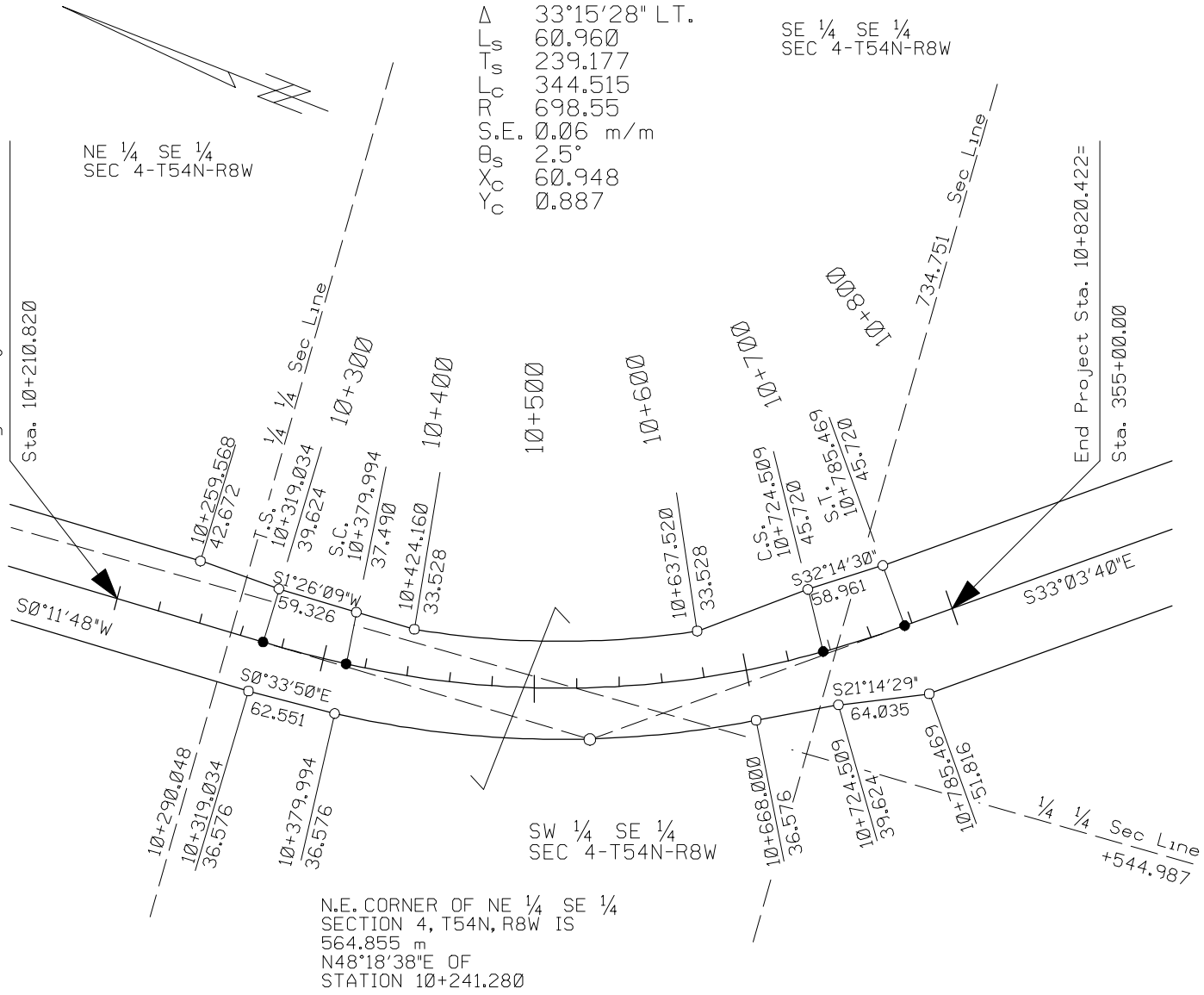


Figure 7