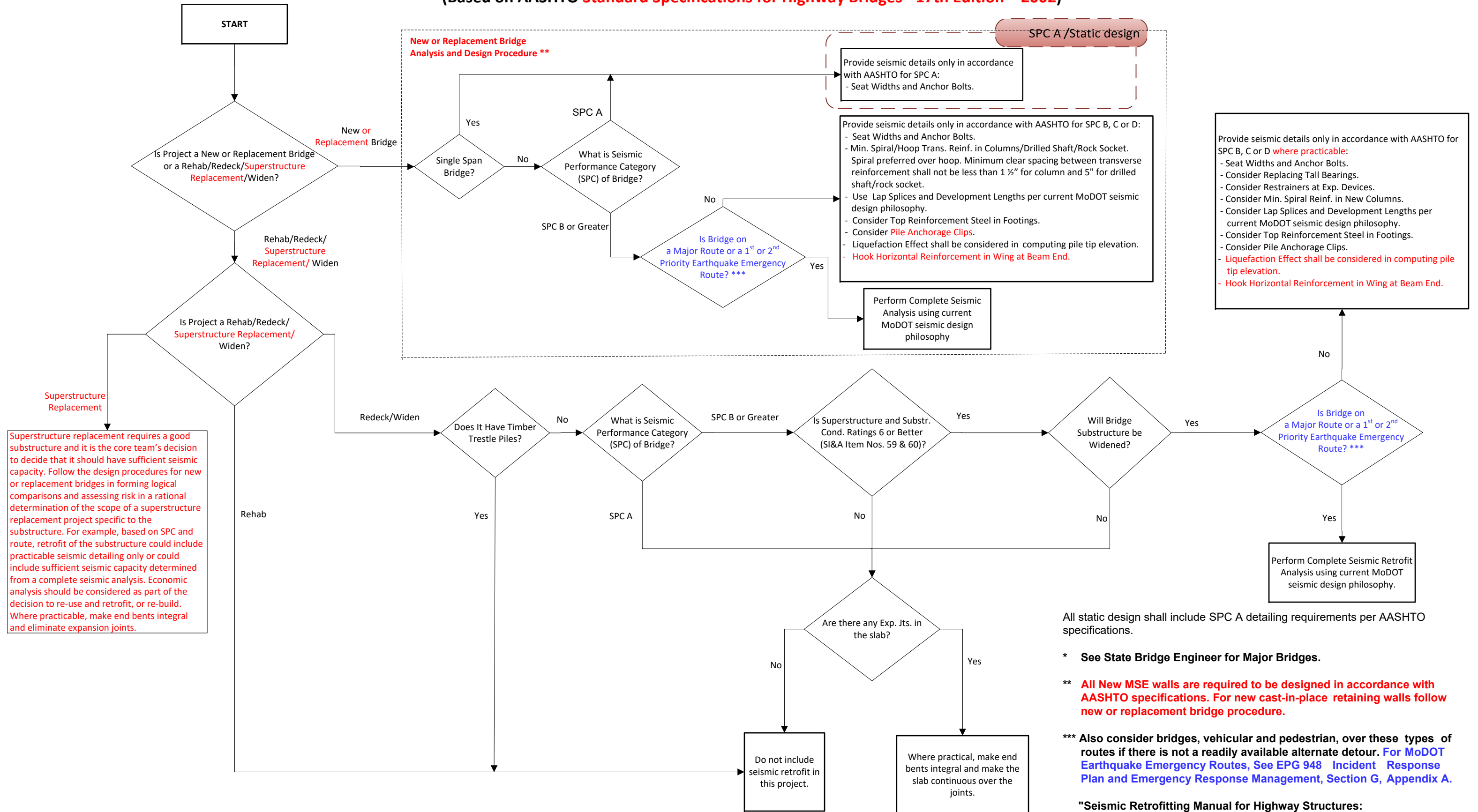


LFD Bridge Seismic Design Flowchart (does not include Major Bridges) *

November 09, 2018

(Based on AASHTO Standard Specifications for Highway Bridges - 17th Edition – 2002)



All static design shall include SPC A detailing requirements per AASHTO specifications.

- * See State Bridge Engineer for Major Bridges.
- ** All New MSE walls are required to be designed in accordance with AASHTO specifications. For new cast-in-place retaining walls follow new or replacement bridge procedure.
- *** Also consider bridges, vehicular and pedestrian, over these types of routes if there is not a readily available alternate detour. For MoDOT Earthquake Emergency Routes, See EPG 948 Incident Response Plan and Emergency Response Management, Section G, Appendix A.

"Seismic Retrofitting Manual for Highway Structures: Part 1 – Bridges, FHWA-HRT-06-032, January 2006 and Part 2 – Retaining Structures, Slopes, Tunnels, Culverts and Roadways, FHWA-HRT-05-067, August 2004 uses Seismic Hazard Level ("SHL") terminology (Not used in flowchart).