

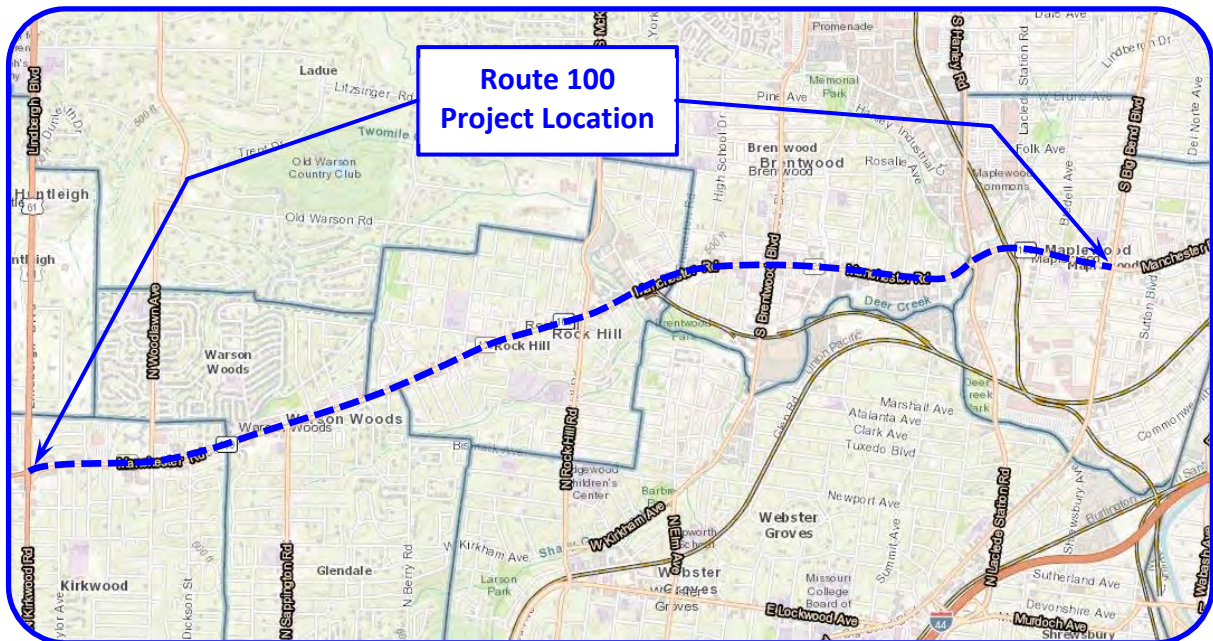


# ROUTE 100 / MANCHESTER ROAD PAVEMENT REHABILITATION AND ADA IMPROVEMENTS

PUBLIC HEARING TRANSCRIPT  
MARCH 27, 2018

MISSOURI DEPARTMENT OF TRANSPORTATION

St. Louis District Office  
1590 Woodlake Drive  
Chesterfield, MO 63017  
314.275.1500



## CONSULTING ENGINEER

THOUVENOT, WADE & MOERCHEN, INC.  
720 Olive Street, Suite 200A  
St. Louis, MO 63101  
314.241.6300  
[jlandeck@twm-inc.com](mailto:jlandeck@twm-inc.com)



# **PUBLIC HEARING TRANSCRIPT**

**Route 100 (Manchester Road)  
Pavement Rehabilitation and  
ADA Improvement Project  
Job No.: J6S1718  
St. Louis County**

**Date of Public Hearing:  
Tuesday, March 27, 2018**

**Prepared for:  
The Missouri Department of Transportation**

**Prepared by:  
Thouvenot, Wade & Moerchen, Inc.  
[www.twm-inc.com](http://www.twm-inc.com)**





## TABLE OF CONTENTS

SECTION 1 .....	Executive Summary
SECTION 2 .....	Public Hearing Exhibits
SECTION 3 .....	Public Hearing Hand-outs
SECTION 4 .....	Public Comments



# **SECTION 1: EXECUTIVE SUMMARY**

**Route 100 (Manchester Road)  
Pavement Rehabilitation and  
ADA Improvement Project  
Job No.: J6S1718  
St. Louis County**







## Executive Summary

This project is located on Route 100 (Manchester Road) in west St. Louis County. The limits of the project extend from just west of Big Bend Boulevard at its eastern extent to Lindbergh Boulevard/Kirkwood Road (US-61/67) at its western extent. The improvements are approximately 4.6 miles long and the project passes through the communities of Maplewood, Brentwood, Rock Hill, Warson Woods, Glendale, and Kirkwood.

The purpose of the project is to:

- Rehabilitate the aging pavement surface on Route 100
- Provide accessible sidewalks, curb ramps, driveway entrances, and equipment at signalized intersections that are compliant with the current ADA guidelines and conform to MoDOT's ADA Transition Plan
- Improve drainage along the corridor
- Replace an aging bridge and rehabilitate another bridge
- Replace or make upgrades to several traffic signals along the route

The Route 100 (Manchester Road) corridor has begun to show its age as the pavement, curbs, and existing sidewalks are in a moderate state of deterioration. The main objectives of this project are to provide a pavement rehabilitation treatment that will preserve the life of the existing roadway pavement on Route 100 and increase overall safety by providing accessible pedestrian facilities along the corridor. The project will also include a bridge rehabilitation of Route 100 over Deer Creek and will replace the aging Route 100 arch bridge over Black Creek near the Hanley Road intersection. The existing traffic signals along the corridor will each be analyzed and upgrades or adjustments will be made according to changes to intersection geometrics and will be brought up to current ADA accessibility standards where needed. In order to accomplish a fully pedestrian accessible corridor, underground utilities will be adjusted to the proper grades and above-ground utilities will be relocated where required. Proper connections between sidewalks and transit stops will be provided through accessible bus stops and bus pads. Additionally, access management guidelines will be utilized in locations where open access to parking areas across the frontage of parcels exists. Thus, access points will be consolidated in an effort to focus vehicular and pedestrian traffic at defined entrance points, limiting the potential for vehicle-pedestrian incidents and increasing overall safety along the corridor.

## Public Outreach

- A public hearing notification letter was distributed to the mailing addresses along the project corridor.
- An announcement of the public hearing was placed on MoDOT's website.





- A legal notice of the public hearing was published in the St. Louis Post-Dispatch.
- An announcement was published in the Webster-Kirkwood South County Times newspaper.
- An announcement was posted on the Cities' of Kirkwood and Brentwood websites.
- A press release about the public hearing was distributed to local media.
- A Rider Alert was posted by Metro Transit at affected bus stops and on its website.

## Public Hearing

A public hearing was held on Tuesday March 27, 2018, from 12:00 noon to 7:00 P.M at the Brentwood School District Conference Center located at 1201 Hanley Industrial Court, St. Louis, Missouri, 63144, to share information about the project. This venue was chosen for its generally centralized location with respect to the project corridor and because it contains a meeting room that was large enough to hold the capacity of crowd that was expected to attend. Approximately 170 local residents, business representatives, elected officials, stakeholders, and other interested parties attended the public hearing. The public hearing was conducted in an open house format.



**Figure 1: Photo from the Public Hearing.**

### Public Hearing Objectives:

- Present the current project design and share project-specific information with the public.
- Be available to answer questions from those in attendance.
- Solicit project-related feedback from the public based on material presented.
- Begin a two-week period during which those who did not attend the public hearing could provide their comments via the virtual public hearing.



**Inside the meeting room, the following stations were available for the public to participate:**

- Welcome/sign-in table - Provided a central greeting area for guests, where they signed the guest book and were given a project fact sheet and a public comment form.
- Project exhibit boards – 2 sets of 6 boards with a strip map illustrating the proposed improvements.
- Tables with pens and comment sheets
- Tables with preliminary plans for more in-depth review compared to the overview on the display boards
- A location with a voice recording device was provided to capture any verbal comments that may be provided in lieu of written comments.

The information for MoDOT's improvements was available on the project's virtual public hearing website at:

[http://www.modot.org/stlouis/major\\_projects/ManchesterResurfacing2018virtualhearing.htm](http://www.modot.org/stlouis/major_projects/ManchesterResurfacing2018virtualhearing.htm)

MoDOT accepted comments by way of their on-line comment platform administered through Survey Monkey until April 10, 2018. There were 837 unique visitors of the on-line hearing (1,267 total visitors).

The Cities of Brentwood and Kirkwood each had an area where interested individuals could visit to see preliminary layouts for enhancements those two communities have planned for the Route 100 corridor.

#### **Public Hearing Results & Comments:**

Public comments were solicited, and responses were received in a number of ways during the comment period:

- Twenty-two (22) written public comments were received at the Public Hearing, including one two-page document from a local organization whose comments were not on the standard comment sheet provided at the public hearing.
- Three (3) written public comments were received via USPS Mail during the comment period
- Forty-eight (48) comments were received by way of the on-line comment survey provided through MoDOT's website as a part of the virtual public hearing

The public was asked to provide a primary subject or subjects to better classify their comments by checking a box next to one or more of the following:

- Questions/comments about the resurfacing project





- Questions/comments about sidewalk improvements
- Questions/comments about access to businesses or properties
- Questions/comments about property/easement acquisition
- Are there other issues MoDOT should consider?

Below this section of the form, space with lines was provided for the individual to record his or her comments, with a location to print their name and address.

A copy of comments received are included in the public transcript.

#### **General Themes of Public Comments:**

- Support of MoDOT's plan to rehabilitate the existing pavement surface and curbs.
- Support of providing accessible sidewalks along both sides of the Route 100 corridor.
- Questions regarding access to and from their property or place of business during and after construction of the project has been completed.
- Questions about MoDOT's Right-of-Way acquisition process.
- Concerns with not providing a center turn lane in the existing 4-lane section of Route 100.
- Concerns that a road diet and bike lanes would not be provided along the corridor.

#### **Conclusion:**

This public hearing was a useful tool for MoDOT to communicate its current plan for improvements along the Route 100 (Manchester Road) corridor to the public. Many stakeholders were effectively reached and MoDOT would like to thank all those who attended the public hearing and those who provided, their comments. This feedback provides a start for the dialogue and is paramount to a successful project because they help contribute to the decision-making process as the design of the project progresses. In summary, this project will continue its focus of pavement preservation, improving safety, creating accessible routes for pedestrians, access management, and bridge improvements. The design will be submitted as the preliminary design for the project.





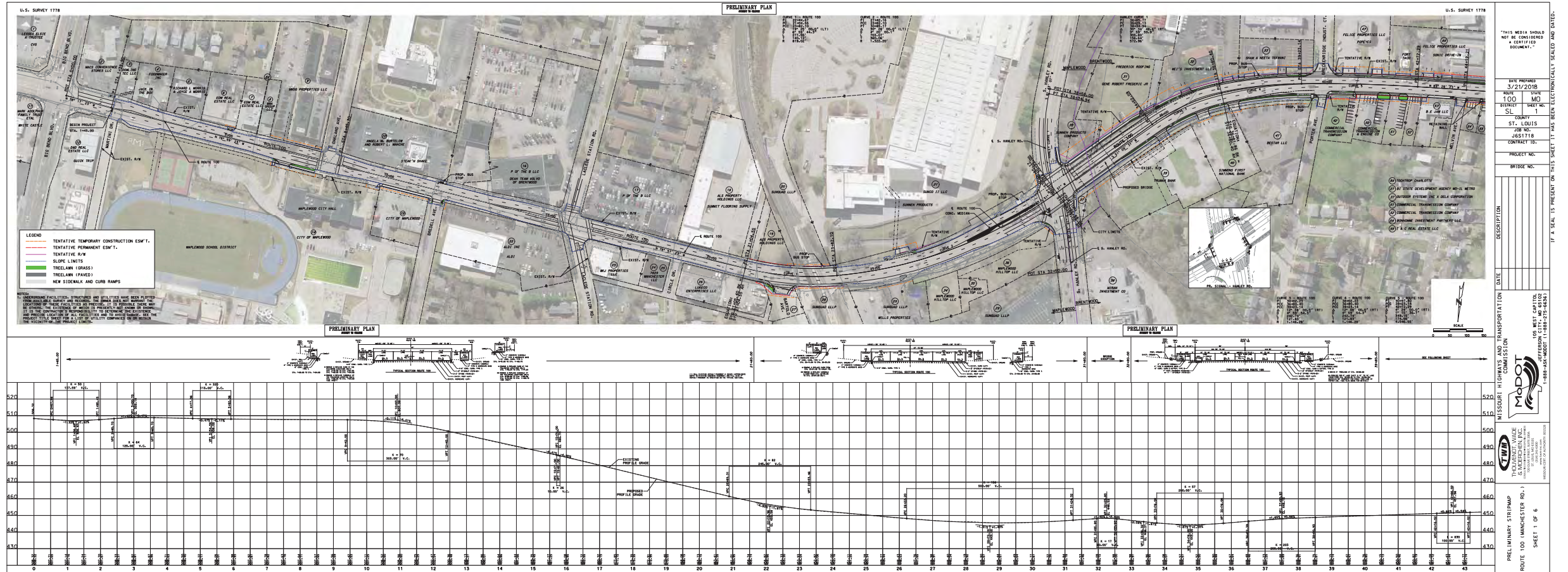
## **SECTION 2: PUBLIC HEARING EXHIBITS**

**Route 100 (Manchester Road)  
Pavement Rehabilitation and  
ADA Improvement Project  
Job No.: J6S1718  
St. Louis County**



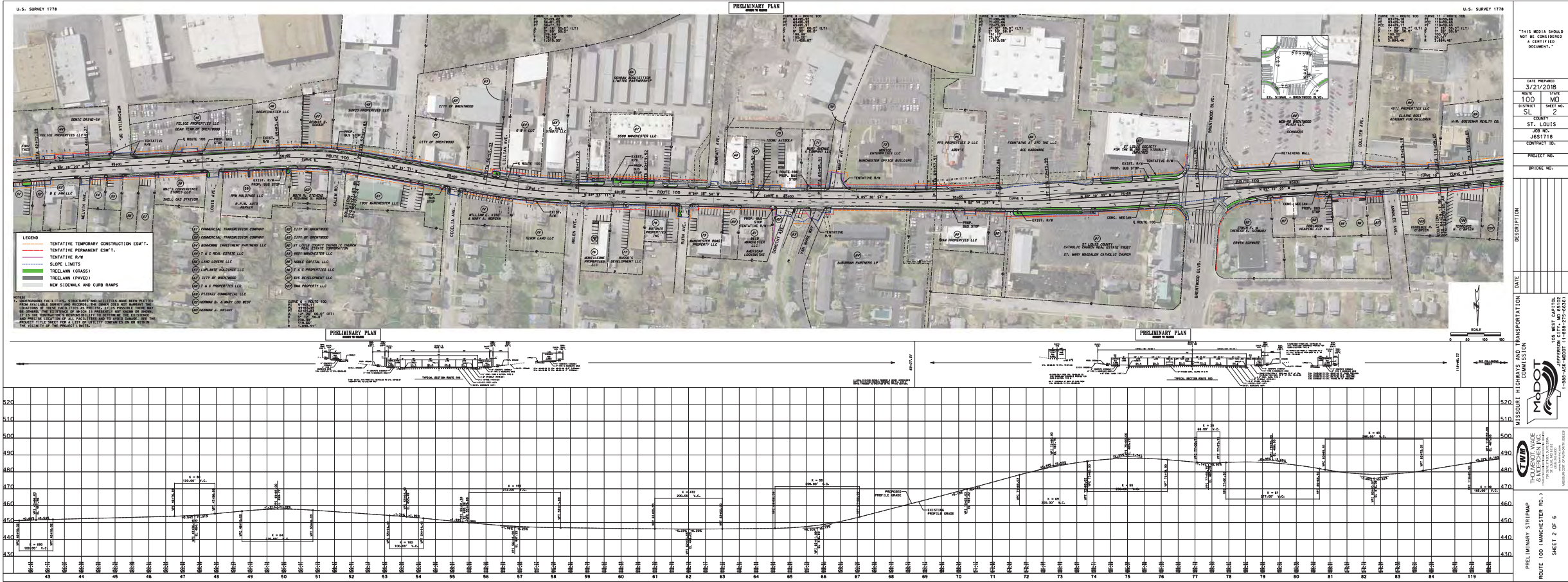


## J6S1718 PUBLIC HEARING DISPLAY BOARD 1 of 6

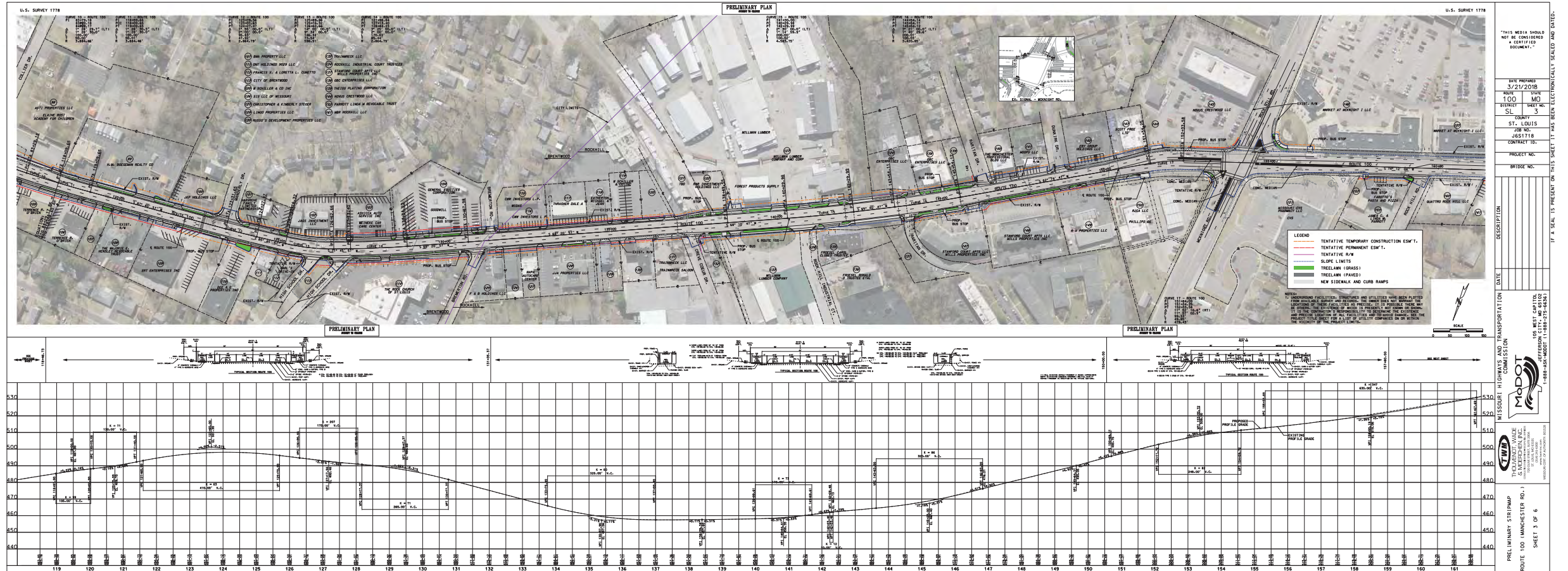




J6S1718 PUBLIC HEARING DISPLAY BOARD 2 of 6

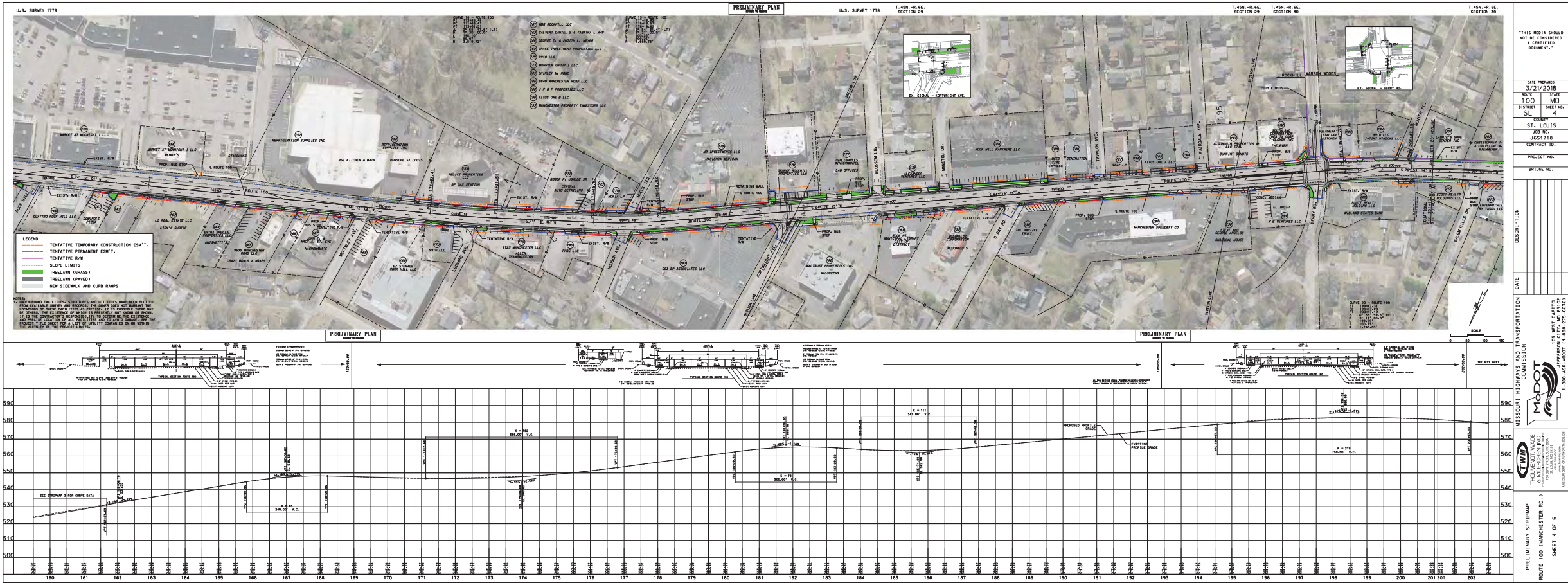




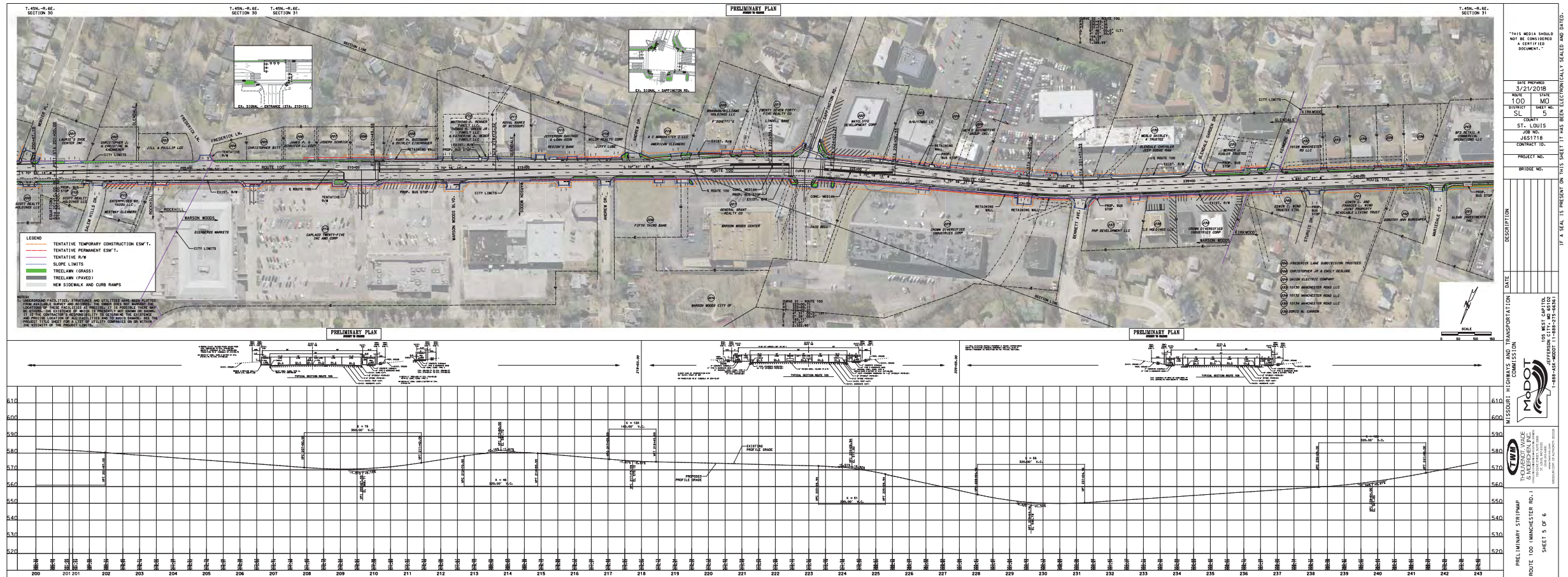




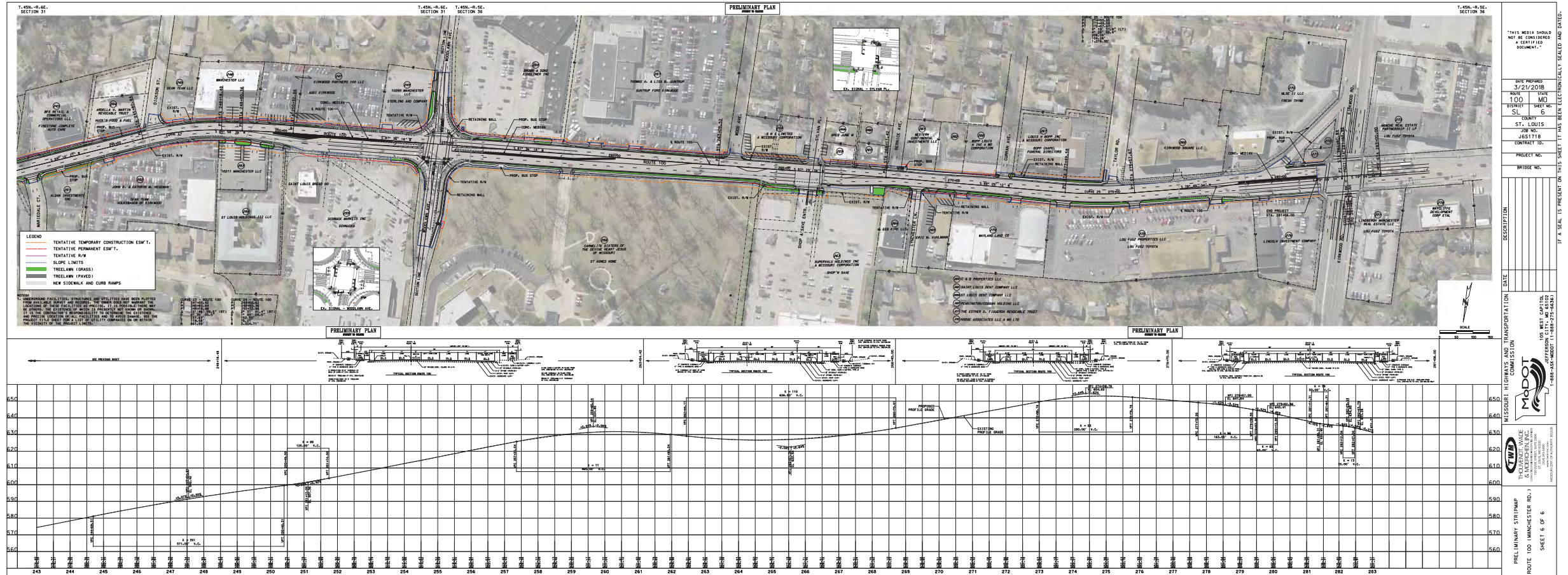
J6S1718 PUBLIC HEARING DISPLAY BOARD 4 of 6













# **SECTION 3: PUBLIC HEARING HAND-OUTS**

**Route 100 (Manchester Road)  
Pavement Rehabilitation and  
ADA Improvement Project  
Job No.: J6S1718  
St. Louis County**







## Manchester Road resurfacing (Lindbergh-Big Bend)

### What is the situation?

In late 2020, the Missouri Department of Transportation is planning to resurface Manchester Road (Missouri Route 100) between Lindbergh and Big Bend. As a part of that project, MoDOT is planning to make significant improvements to sidewalks along as much of the corridor as possible, including ensuring the sidewalks meet Americans with Disabilities Act requirements.

### What are the anticipated impacts?

Most of the resurfacing work will take place overnight, with up to two lanes closed – traffic will shift to either side, but during most days, all lanes will remain open. During sidewalk construction, crews will work in either MoDOT's right of way or private property in which the department has obtained an easement. This may require some short lane closures. In addition, crews may rebuild many of the businesses entrances; however, they will make sure customers can access the business at all times.

A portion of the project will replace the bridge over Black Creek west of the Manchester and Hanley intersection. At this point, there will be roadway construction impacts, but the exact impacts have not yet been determined. In addition, Kirkwood and Brentwood are partnering with MoDOT for some additional work along the corridor.

### What does the project include?

Besides the resurfacing and sidewalk work, MoDOT will replace some signals and make updates to storm sewers and medians. In some locations, the department will replace the existing gutter with curbs and will provide more defined driveways for several businesses. There are no planned changes to existing lanes on Manchester Road.

### What is the timeline?

Conceptual Plans	Summer 2017 - complete
Meeting with Business Owners	Summer 2017 - complete
Preliminary/ROW Plans	Early 2018
Public Hearing	March 2018
Right of Way/Easement Negotiations	Fall 2018
Construction begins	Late 2020
Construction complete	Late summer 2022



# *We Want Your Comments*



## ***On the Manchester Road resurfacing between Lindbergh and Big Bend***

Please provide us with your written suggestions or comments by turning them in today or by mailing to:

**Andrew Gates, Community Relations  
Missouri Department of Transportation  
1590 Woodlake Drive  
Chesterfield, MO 63017-5712**

**E-mail comments to: [Andrew.Gates@modot.mo.gov](mailto:Andrew.Gates@modot.mo.gov)**

My comments include (*please check all that apply*):

- ☐ Questions/comments about the resurfacing project
- ☐ Questions/comments about sidewalk improvements
- ☐ Questions/comments about access to businesses or properties
- ☐ Questions/comments about property/easement acquisition
- ☐ Are there other issues MoDOT should consider? If so, please state them below:

Comments:

---

---

---

---

---

Name (*print*):

Address:

*All comments must be received by Wednesday, April 10*



# **SECTION 4: PUBLIC COMMENTS**

**Route 100 (Manchester Road)  
Pavement Rehabilitation and  
ADA Improvement Project  
Job No.: J6S1718  
St. Louis County**





# ***We Want Your Comments***



## ***On the Manchester Road resurfacing between Lindbergh and Big Bend***

Please provide us with your written suggestions or comments by turning them in today or by mailing to:

**Andrew Gates, Community Relations  
Missouri Department of Transportation  
1590 Woodlake Drive  
Chesterfield, MO 63017-5712**

**E-mail comments to: [Andrew.Gates@modot.mo.gov](mailto:Andrew.Gates@modot.mo.gov)**

My comments include *(please check all that apply)*:

- ☐ Questions/comments about the resurfacing project
- ☐ Questions/comments about sidewalk improvements
- ☒ Questions/comments about access to businesses or properties
- ☐ Questions/comments about property/easement acquisition
- ☐ Are there other issues MoDOT should consider? If so, please state them below:

### **Comments:**

EASTBOUND Traffic on Manchester - STOP & Turn  
left into Parcel #182 (WALGREEN'S) OFTEN  
STOPPING TRAFFIC on Manchester and blocking vehicles  
from Blossom Lane from turning west on Manchester  
originally there was a no left turn sign - but that  
was removed and now is a greater problem

Name (print): TIM O'DONNELL

Address: 905 Blossom Lane 63119 STLSCOUTS@MSN.COM

***All comments must be received by Wednesday, April 10***



# ***We Want Your Comments***



## ***On the Manchester Road resurfacing between Lindbergh and Big Bend***

Please provide us with your written suggestions or comments by turning them in today or by mailing to:

Andrew Gates, Community Relations  
Missouri Department of Transportation  
1590 Woodlake Drive  
Chesterfield, MO 63017-5712

E-mail comments to: [Andrew.Gates@modot.mo.gov](mailto:Andrew.Gates@modot.mo.gov)

My comments include *(please check all that apply)*:

- ☐ Questions/comments about the resurfacing project
- ☒ Questions/comments about sidewalk improvements
- ☒ Questions/comments about access to businesses or properties
- ☒ Questions/comments about property/easement acquisition
- ☐ Are there other issues MoDOT should consider? If so, please state them below:

### **Comments:**

*Sidewalk improvements - great they're needed  
Access - concern - could be landlocked on the owners  
Signage and planting could be damaged*

*Property easement acquisition*

Name (print): *Janet Poppen-JKL Properties*

Address: *9012 Manchester Road 63144*

***All comments must be received by Wednesday, April 10***



# ***We Want Your Comments***



## ***On the Manchester Road resurfacing between Lindbergh and Big Bend***

Please provide us with your written suggestions or comments by turning them in today or by mailing to:

Andrew Gates, Community Relations  
Missouri Department of Transportation  
1590 Woodlake Drive  
Chesterfield, MO 63017-5712

E-mail comments to: [Andrew.Gates@modot.mo.gov](mailto:Andrew.Gates@modot.mo.gov)

My comments include *(please check all that apply)*:

- ☐ Questions/comments about the resurfacing project
- ☐ Questions/comments about sidewalk improvements
- ☐ Questions/comments about access to businesses or properties
- ☐ Questions/comments about property/easement acquisition
- ☐ Are there other issues MoDOT should consider? If so, please state them below:

### **Comments:**

somewhat unclear to me as far as  
will the power be buried? That would  
help clean the look of Manchester Road.

Name (print): JOHN LEFANT

Address: 9995 MANCHESTER ROAD WARREN MOOR, MO 63122

***All comments must be received by Wednesday, April 10***





# ***We Want Your Comments***



## ***On the Manchester Road resurfacing between Lindbergh and Big Bend***

Please provide us with your written suggestions or comments by turning them in today or by mailing to:

Andrew Gates, Community Relations  
Missouri Department of Transportation  
1590 Woodlake Drive  
Chesterfield, MO 63017-5712

E-mail comments to: [Andrew.Gates@modot.mo.gov](mailto:Andrew.Gates@modot.mo.gov)

My comments include *(please check all that apply)*:

- ☐ Questions/comments about the resurfacing project
- ☒ Questions/comments about sidewalk improvements
- ☐ Questions/comments about access to businesses or properties
- ☐ Questions/comments about property/easement acquisition
- ☒ Are there other issues MoDOT should consider? If so, please state them below:

### **Comments:**

*I love that you're making the side walks  
along Manchester ADA Compliant.  
Perhaps consider more signalized  
crosswalks in Rock Hill.  
Thanks!*

Name *(print)*:

Address:

***All comments must be received by Wednesday, April 10***



# ***We Want Your Comments***



## ***On the Manchester Road resurfacing between Lindbergh and Big Bend***

Please provide us with your written suggestions or comments by turning them in today or by mailing to:

Andrew Gates, Community Relations  
Missouri Department of Transportation  
1590 Woodlake Drive  
Chesterfield, MO 63017-5712

E-mail comments to: [Andrew.Gates@modot.mo.gov](mailto:Andrew.Gates@modot.mo.gov)

My comments include (please check all that apply):

- ☐ Questions/comments about the resurfacing project
- ☐ Questions/comments about sidewalk improvements
- ☐ Questions/comments about access to businesses or properties
- ☐ Questions/comments about property/easement acquisition
- ☒ Are there other issues MoDOT should consider? If so, please state them below:

### **Comments:**

MANCHESTER ROAD IS PART OF THE GATEWAY BIKE PLAN (ADOPTED BY ST. LOUIS COUNTY  
? OTHERS) WHICH CALL FOR A MINIMUM OF BIKE LANES ALONG THIS CORRIDOR.  
IT IS ALSO A PART OF ADVENTURE CYCLING ASSOCIATION'S BICYCLE ROUTE  
66. ANY DEVIATION FROM THIS PLAN NEEDS A FORMAL JUSTIFICATION TO THE  
GATEWAY BIKE PLAN WORKING GROUP. ADDITIONALLY ST. LOUIS COUNTY HAS A COMPLETED  
STREETS POLICY THAT CALLS FOR ROADS TO BE DESIGNED WITH THE MOST VULNERABLE  
USERS FIRST.

Name (print): ~~XXXX~~ TAYLOR MARCH

Address: 649 MINNESOTA AVE. 63111

***All comments must be received by Wednesday, April 10***



# ***We Want Your Comments***



## ***On the Manchester Road resurfacing between Lindbergh and Big Bend***

Please provide us with your written suggestions or comments by turning them in today or by mailing to:

Andrew Gates, Community Relations  
Missouri Department of Transportation  
1590 Woodlake Drive  
Chesterfield, MO 63017-5712

E-mail comments to: [Andrew.Gates@modot.mo.gov](mailto:Andrew.Gates@modot.mo.gov)

My comments include (please check all that apply):

- ☐ Questions/comments about the resurfacing project
- ☒ Questions/comments about sidewalk improvements
- ☒ Questions/comments about access to businesses or properties
- ☐ Questions/comments about property/easement acquisition
- ☐ Are there other issues MoDOT should consider? If so, please state them below:

### **Comments:**

Please consider ingress into Society of Blind for westbound traffic to get into property at eastern entrance into Society of Blind! Brentwood & Manchester  
Square-off pedestrian crossing on east side at intersect at Brentwood & Manchester  
we want both entrances to property to remain!

Name (print):

DAVID EKV, President

314-988-9000

Address:

Society of Blind  
8770 Manchester Rd.

denise @ sblind.org

***All comments must be received by Wednesday, April 10***



# ***We Want Your Comments***



## ***On the Manchester Road resurfacing between Lindbergh and Big Bend***

Please provide us with your written suggestions or comments by turning them in today or by mailing to:

Andrew Gates, Community Relations  
Missouri Department of Transportation  
1590 Woodlake Drive  
Chesterfield, MO 63017-5712

E-mail comments to: [Andrew.Gates@modot.mo.gov](mailto:Andrew.Gates@modot.mo.gov)

My comments include (please check all that apply):

- ☐ Questions/comments about the resurfacing project
- ☐ Questions/comments about sidewalk improvements
- ☐ Questions/comments about access to businesses or properties
- ☐ Questions/comments about property/easement acquisition
- ☒ Are there other issues MoDOT should consider? If so, please state them below:

### **Comments:**

*Alignment of the westbound left turn lanes at Manchester and McKnight. It is very hard to see oncoming eastbound Manchester traffic when making a left turn onto McKnight (Rock Hill Road) from westbound Manchester.*

Name (print): Jennifer Yackley

Address: 320 W. Thornton Ave, 63119

***All comments must be received by Wednesday, April 10***



# ***We Want Your Comments***



## ***On the Manchester Road resurfacing between Lindbergh and Big Bend***

Please provide us with your written suggestions or comments by turning them in today or by mailing to:

**Andrew Gates, Community Relations  
Missouri Department of Transportation  
1590 Woodlake Drive  
Chesterfield, MO 63017-5712**

**E-mail comments to: [Andrew.Gates@modot.mo.gov](mailto:Andrew.Gates@modot.mo.gov)**

My comments include (*please check all that apply*):

- ☐ Questions/comments about the resurfacing project
- ☐ Questions/comments about sidewalk improvements
- ☐ Questions/comments about access to businesses or properties
- ☐ Questions/comments about property/easement acquisition
- ☐ Are there other issues MoDOT should consider? If so, please state them below:

### **Comments:**

*Why is Maplewood involved in  
this? - Big Bend is Richmond Hts -*

---

---

---

Name (*print*): *Cecelia Nangle*  
Address: *9212 Eager Rd*

***All comments must be received by Wednesday, April 10***



# ***We Want Your Comments***



## ***On the Manchester Road resurfacing between Lindbergh and Big Bend***

Please provide us with your written suggestions or comments by turning them in today or by mailing to:

Andrew Gates, Community Relations  
Missouri Department of Transportation  
1590 Woodlake Drive  
Chesterfield, MO 63017-5712

E-mail comments to: [Andrew.Gates@modot.mo.gov](mailto:Andrew.Gates@modot.mo.gov)

My comments include *(please check all that apply)*:

- ☐ Questions/comments about the resurfacing project
- ☐ Questions/comments about sidewalk improvements
- ☐ Questions/comments about access to businesses or properties
- ☐ Questions/comments about property/easement acquisition
- ☐ Are there other issues MoDOT should consider? If so, please state them below:

### **Comments:**

*10211 Manchester - Billy Goat Bicycles Co.  
the entrances to the parking lots are  
already very small for tractor-trailer drivers  
as it is. It looks like we will be losing  
even more by rounding off the grass/treelawn.*

Name (print): Patricia Cannon

Address: 2910 Woods Rd. Wildwood Mo 63038

***All comments must be received by Wednesday, April 10***





# ***We Want Your Comments***



## ***On the Manchester Road resurfacing between Lindbergh and Big Bend***

Please provide us with your written suggestions or comments by turning them in today or by mailing to:

Andrew Gates, Community Relations  
Missouri Department of Transportation  
1590 Woodlake Drive  
Chesterfield, MO 63017-5712

E-mail comments to: [Andrew.Gates@modot.mo.gov](mailto:Andrew.Gates@modot.mo.gov)

My comments include (please check all that apply):

- ☐ Questions/comments about the resurfacing project
- ☐ Questions/comments about sidewalk improvements
- ☐ Questions/comments about access to businesses or properties
- ☐ Questions/comments about property/easement acquisition
- ☒ Are there other issues MoDOT should consider? If so, please state them below:

### **Comments:**

*Thank you for working with Metro on installing more bus benches & shelters, particularly for Eastbound, just west of Sappington. Several people wait at this stop. Also, please do not use opaque sides on shelter that prevent seeing west to see the bus coming when sitting down*

Name (print): Catherine Kaiser

Address: 7601 Comfort Ave 63143

***All comments must be received by Wednesday, April 10***



# ***We Want Your Comments***



## ***On the Manchester Road resurfacing between Lindbergh and Big Bend***

Please provide us with your written suggestions or comments by turning them in today or by mailing to:

**Andrew Gates, Community Relations  
Missouri Department of Transportation  
1590 Woodlake Drive  
Chesterfield, MO 63017-5712**

**E-mail comments to: [Andrew.Gates@modot.mo.gov](mailto:Andrew.Gates@modot.mo.gov)**

My comments include *(please check all that apply)*:

- ☐ Questions/comments about the resurfacing project
- ☐ Questions/comments about sidewalk improvements
- ☐ Questions/comments about access to businesses or properties
- ☐ Questions/comments about property/easement acquisition
- ☒ Are there other issues MoDOT should consider? If so, please state them below:

### **Comments:**

*westbound Manchester 18 wheelers cant make  
right turn onto Northbound Lindbergh*

Name *(print)*:

Address:

***All comments must be received by Wednesday, April 10***



# ***We Want Your Comments***



## ***On the Manchester Road resurfacing between Lindbergh and Big Bend***

Please provide us with your written suggestions or comments by turning them in today or by mailing to:

Andrew Gates, Community Relations  
Missouri Department of Transportation  
1590 Woodlake Drive  
Chesterfield, MO 63017-5712

E-mail comments to: [Andrew.Gates@modot.mo.gov](mailto:Andrew.Gates@modot.mo.gov)

My comments include (please check all that apply):

- ☐ Questions/comments about the resurfacing project
- ☒ Questions/comments about sidewalk improvements
- ☒ Questions/comments about access to businesses or properties
- ☒ Questions/comments about property/easement acquisition
- ☒ Are there other issues MoDOT should consider? If so, please state them below:

IE: PARKING,  
EXISTING  
SIGNAGE.

### **Comments:**

THANK YOU FOR THE OPPORTUNITY TO REVIEW  
YOUR PROGRAM, PLEASE CONTACT US TO REVIEW  
SPECIFICS WHEN YOU ARE READY REGARDING  
DIERBERGS-WARREN WOOD SHEDDING CENTER

THANKS AGAIN,

PAT CUNNINGHAM

Name (print): PAT CUNNINGHAM  
Address: 11850 STOUT AVE. / P.O. BOX 419121  
ST. LOUIS, MO. 63141

**All comments must be received by Wednesday, April 10**

314-991-8900 EXT. 253  
PFC @ CAPLACO.COM



# ***We Want Your Comments***



## ***On the Manchester Road resurfacing between Lindbergh and Big Bend***

Please provide us with your written suggestions or comments by turning them in today or by mailing to:

Andrew Gates, Community Relations  
Missouri Department of Transportation  
1590 Woodlake Drive  
Chesterfield, MO 63017-5712

E-mail comments to: [Andrew.Gates@modot.mo.gov](mailto:Andrew.Gates@modot.mo.gov)

My comments include (please check all that apply):

- ☐ Questions/comments about the resurfacing project
- ☐ Questions/comments about sidewalk improvements
- ☐ Questions/comments about access to businesses or properties
- ☐ Questions/comments about property/easement acquisition
- ☒ Are there other issues MoDOT should consider? If so, please state them below:

### **Comments:**

INTERSECTION OF MANCHESTER & BREMERTON RD AT BRENTWOOD-ROCK HILL  
BOUNDARY SHOULD BE CONSIDERED FOR REALIGNMENT. IT IS DANGEROUS NOW  
BECAUSE OF THE APPROACH OF BREMERTON FROM THE SOUTH NOT ALIGNING WITH  
BREMERTON FROM THE NORTH. THERE IS A LOT OF TRAFFIC ON BREMERTON  
FROM BOTH DIRECTIONS. IT SEEMS IT WOULD ONLY REQUIRE TAKING A SLIVER  
OF GOODWILLS PARKING LOT TO BRING ~~THE~~ BREMERTON ~~ON~~ ON THE SOUTH  
INTO ALIGNMENT WITH BREMERTON ON THE NORTH, MAKING THE INTERSECTION  
SAFER.

Name (print): ROBERT ZEMAN

Address: 2500 BREMERTON RD  
BRENTWOOD, MO 63144

***All comments must be received by Wednesday, April 10***



# ***We Want Your Comments***



## ***On the Manchester Road resurfacing between Lindbergh and Big Bend***

Please provide us with your written suggestions or comments by turning them in today or by mailing to:

Andrew Gates, Community Relations  
Missouri Department of Transportation  
1590 Woodlake Drive  
Chesterfield, MO 63017-5712

E-mail comments to: [Andrew.Gates@modot.mo.gov](mailto:Andrew.Gates@modot.mo.gov)

My comments include (please check all that apply):

- ☐ Questions/comments about the resurfacing project
- ☐ Questions/comments about sidewalk improvements
- ☐ Questions/comments about access to businesses or properties
- ☐ Questions/comments about property/easement acquisition
- ☒ Are there other issues MoDOT should consider? If so, please state them below:

### **Comments:**

⑧ Utility poles. I'd like to see them put  
underground between Hanly Road & Brentwood  
Blvd. Thank you.

Name (print): Toni Becerra

Address: 1618 E Sun Circle, 63144

***All comments must be received by Wednesday, April 10***



# ***We Want Your Comments***



## ***On the Manchester Road resurfacing between Lindbergh and Big Bend***

Please provide us with your written suggestions or comments by turning them in today or by mailing to:

Andrew Gates, Community Relations  
Missouri Department of Transportation  
1590 Woodlake Drive  
Chesterfield, MO 63017-5712

E-mail comments to: [Andrew.Gates@modot.mo.gov](mailto:Andrew.Gates@modot.mo.gov)

My comments include (please check all that apply):

- ☐ Questions/comments about the resurfacing project
- ☐ Questions/comments about sidewalk improvements
- ☒ Questions/comments about access to businesses or properties
- ☐ Questions/comments about property/easement acquisition
- ☐ Are there other issues MoDOT should consider? If so, please state them below:

### **Comments:**

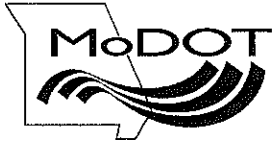
*Kortwright*  
*In Rock Hill @ just west of ~~Manchester~~, I would*  
*request "no left turn" into walgreens from*  
*Manchester. Also, ~~having~~ it would help backups*  
*if there were a left turn light onto*  
*Kortwright.*

Name (print):

Address:

***All comments must be received by Wednesday, April 10***





# ***We Want Your Comments***



## ***On the Manchester Road resurfacing between Lindbergh and Big Bend***

Please provide us with your written suggestions or comments by turning them in today or by mailing to:

Andrew Gates, Community Relations  
Missouri Department of Transportation  
1590 Woodlake Drive  
Chesterfield, MO 63017-5712

E-mail comments to: [Andrew.Gates@modot.mo.gov](mailto:Andrew.Gates@modot.mo.gov)

My comments include (please check all that apply):

- ☐ Questions/comments about the resurfacing project
- ☐ Questions/comments about sidewalk improvements
- ☐ Questions/comments about access to businesses or properties
- ☐ Questions/comments about property/easement acquisition
- ☒ Are there other issues MoDOT should consider? If so, please state them below:

### **Comments:**

Parcel 125: Drainage issue off Brenton Rd  
goes south crosses lot at diagonal  
Does not use access off Route 100, could close  
if we can resolve drainage issue.

Name (print): JEFF BRIESEMEISTER

Address: 9201 MANCHESTER RD.

***All comments must be received by Wednesday, April 10***



# ***We Want Your Comments***



## ***On the Manchester Road resurfacing between Lindbergh and Big Bend***

Please provide us with your written suggestions or comments by turning them in today or by mailing to:

Andrew Gates, Community Relations  
Missouri Department of Transportation  
1590 Woodlake Drive  
Chesterfield, MO 63017-5712

E-mail comments to: [Andrew.Gates@modot.mo.gov](mailto:Andrew.Gates@modot.mo.gov)

My comments include (please check all that apply):

- ☐ Questions/comments about the resurfacing project
- ☒ Questions/comments about sidewalk improvements
- ☐ Questions/comments about access to businesses or properties
- ☐ Questions/comments about property/easement acquisition
- ☐ Are there other issues MoDOT should consider? If so, please state them below:

### **Comments:**

- ① Across from Dierberg's in Watson Woods/  
Glendale we use the paved shoulder  
to walk to signal. Could a sidewalk  
be provided to keep the connection?
- ② Water mains break often @ Berry/Manchester.  
Can long term fix w/ MUAWC be done?

Name (print): Dennis Koscielski

Address: 767 754 Glenvista 63122

***All comments must be received by Wednesday, April 10***

- ③ Pavement @ NW corner of Scappington/Rte 100  
in poor condition. Suggest examining potential  
of full depth repair/replacement.



# ***We Want Your Comments***



## ***On the Manchester Road resurfacing between Lindbergh and Big Bend***

Please provide us with your written suggestions or comments by turning them in today or by mailing to:

Andrew Gates, Community Relations  
Missouri Department of Transportation  
1590 Woodlake Drive  
Chesterfield, MO 63017-5712

E-mail comments to: [Andrew.Gates@modot.mo.gov](mailto:Andrew.Gates@modot.mo.gov)

My comments include (please check all that apply):

- ☐ Questions/comments about the resurfacing project
- ☒ Questions/comments about sidewalk improvements
- ☒ Questions/comments about access to businesses or properties
- ☐ Questions/comments about property/easement acquisition
- ☐ Are there other issues MoDOT should consider? If so, please state them below:

### **Comments:**

Kortwright & Manchester needs left turn light  
Thank you for sidewalks in front of Hacienda  
Walgreens Manchester entrance needs to be right-in, right-out only  
Close off Manchester entrance for property 125 to  
eliminate cut thru traffic off Bremerton

Name (print): Philip Schery - Alderman Rock Hill

Address:

***All comments must be received by Wednesday, April 10***



# ***We Want Your Comments***



## ***On the Manchester Road resurfacing between Lindbergh and Big Bend***

Please provide us with your written suggestions or comments by turning them in today or by mailing to:

Andrew Gates, Community Relations  
Missouri Department of Transportation  
1590 Woodlake Drive  
Chesterfield, MO 63017-5712

E-mail comments to: [Andrew.Gates@modot.mo.gov](mailto:Andrew.Gates@modot.mo.gov)

My comments include (please check all that apply):

- ☒ Questions/comments about the resurfacing project
- ☐ Questions/comments about sidewalk improvements
- ☐ Questions/comments about access to businesses or properties
- ☐ Questions/comments about property/easement acquisition
- ☒ Are there other issues MoDOT should consider? If so, please state them below:

### **Comments:**

Please add a center turn lane.  
Des Perre has this and it is needed in  
B-Wood, Rock Hill, K-Wood.

Name (print):

Address:

Bob Dole  
9549 PLAINFIELD DR 63119  
314-962-2686

***All comments must be received by Wednesday, April 10***



# ***We Want Your Comments***



## ***On the Manchester Road resurfacing between Lindbergh and Big Bend***

Please provide us with your written suggestions or comments by turning them in today or by mailing to:

Andrew Gates, Community Relations  
Missouri Department of Transportation  
1590 Woodlake Drive  
Chesterfield, MO 63017-5712

E-mail comments to: [Andrew.Gates@modot.mo.gov](mailto:Andrew.Gates@modot.mo.gov)

My comments include (please check all that apply):

- ☐ Questions/comments about the resurfacing project
- ☒ Questions/comments about sidewalk improvements
- ☒ Questions/comments about access to businesses or properties
- ☒ Questions/comments about property/easement acquisition
- ☐ Are there other issues MoDOT should consider? If so, please state them below:

### **Comments:**

LOSING ACCESS TO 4-5 PARKING SPACES  
WILL CAUSE SEVERE DAMAGE TO THE  
BUSINESS AND THE VALUE OF THE PROPERTY!  
ENOUGH  
IF ANGLE PARKING CAN BE WORKED OUT ON  
THE WEST SIDE THIS WOULD BE A SOLUTION.

Name (print): FRANCIS CUNETTO

Address: 9033 MANCHESTER CARL'S DRIVE IN

**All comments must be received by Wednesday, April 10**



# ***We Want Your Comments***



## ***On the Manchester Road resurfacing between Lindbergh and Big Bend***

Please provide us with your written suggestions or comments by turning them in today or by mailing to:

Andrew Gates, Community Relations  
Missouri Department of Transportation  
1590 Woodlake Drive  
Chesterfield, MO 63017-5712

E-mail comments to: [Andrew.Gates@modot.mo.gov](mailto:Andrew.Gates@modot.mo.gov)

My comments include (please check all that apply):

- ☐ Questions/comments about the resurfacing project
- ☒ Questions/comments about sidewalk improvements
- ☒ Questions/comments about access to businesses or properties
- ☐ Questions/comments about property/easement acquisition
- ☐ Are there other issues MoDOT should consider? If so, please state them below:

**Comments:**

Robinson Hearing Aid & Baumann Meats  
8829, 8831-35 Manchester Rd. sidewalks  
are right at our front doors with sidewalk  
at the curb of Manchester Rd. We also  
have a steep driveway entrance to parking  
lot

Name (print): Don Woodruff, Robinson Hearing Aid, Baumann's  
meats.  
Address: 8831 Manchester

***All comments must be received by Wednesday, April 10***





## Manchester Road Enhancements

Our list of suggestions to improve the safety of pedestrians who have a visual impairment. Note: We feel these suggestions benefit not only our clients but all pedestrians, wheelchair users, cyclists, and motorists.

- Perpendicular curb ramps as opposed to diagonal (90-degree angles at both Manchester and Brentwood crossings and Manchester and Hanley crossings – NOT blended 45-degree in use now)
- Contrast markings along curb ramp flares
- Straight sidewalks are preferable to curving lines due to auditory alignment when walking along a line of direction
- Tactile indicators along multi-use pathways (may help our clients to avoid bike pathway). Avoid use of too many different tactile markings
- At intersections, install auditory locator beacon (Hanley intersection) to allow clients with visual impairments to find destination curb or sidewalk
- No landscaping (such as container plantings) in the pathway leading to the intersection or blocking path to access pedestrian signal push button
- Use of high contrast (when possible) and include beneficial landscape lighting
- Avoid plants that attract bees or have thorns next to a walkway – distance of 3' minimum
- Avoid use of multi-color or ornamental designs within crosswalks (however; tinted concrete with stamped texture can be helpful)
- Consider use of rumble strips placed parallel with crosswalk striping – curb to curb. Provides a tactile line of direction for people with a visual impairment using the white cane when making street crossings - helps them to avoid veer into parallel and perpendicular streets. (This was done at Kehrs Mill and Baxter Road intersections with Clayton Road)

Public Hearing Comments

Page 22 of 23

**Serving Children and Adults with Vision Loss**

### Intersection of Manchester Road and Brentwood Blvd

The Society for the Blind and Visually Impaired is located on the SE corner at the intersection of Manchester Road and Brentwood Blvd. and has 3 parking lot entrances – one on east side of Brentwood Blvd. and 2 on south side of Manchester Rd.

There is an access issue for people traveling westbound on Manchester Road (approaching Brentwood Blvd) and attempting to enter our parking lot. They can't. Drivers must turn left (south) onto Brentwood Blvd. and then look for a driveway or place where they can turn around to come back to the intersection and enter our parking lot on the east side of Brentwood Blvd. This affects not only people wishing to visit The Society for the Blind and VI but for each of the businesses located in our building.

We would like to see if there is a solution to make our parking lot entrances on Manchester Rd. more accessible to visitors coming from the east.

One possible solution: shorten the east end of the median (along north side of Manchester) to allow left (south) turning vehicles to enter our east driveway entrance.

Another solution: allow westbound vehicles to make a U-turn at Manchester and Brentwood to come back to our west (or east) parking lot entrance. In order to do this, determine if there is enough turning radius, plus...the right turn lane on Brentwood for vehicles turning left (east) would require a turn arrow indicator.

Many of the people who visit our office (clients and family members) are older adults and many have commented on the challenge they have of accessing our parking lot, especially those who are approaching from the east.



# We Want Your Comments



## On the Manchester Road resurfacing between Lindbergh and Big Bend

Please provide us with your written suggestions or comments by turning them in today or by mailing to:

Andrew Gates, Community Relations  
Missouri Department of Transportation  
1590 Woodlake Drive  
Chesterfield, MO 63017-5712

E-mail comments to: [Andrew.Gates@modot.mo.gov](mailto:Andrew.Gates@modot.mo.gov)

My comments include (please check all that apply):

- ☐ Questions/comments about the resurfacing project
- ☒ Questions/comments about sidewalk improvements
- ☐ Questions/comments about access to businesses or properties
- ☒ Questions/comments about property/easement acquisition
- ☒ Are there other issues MoDOT should consider? If so, please state them below:

### Comments:

How will our signage be adjusted.  
How are we compensated for loss of property?

Does the easement impinge on existing parking & roadway  
We would like to know more about the design & materials  
as they relate to the retaining wall.

What is the height and type of material used to  
construct the fencing on top of the retaining wall.  
Electricity to planned easement will need to be capped.

Name (print): Jeff Logan or Tim Pennington

Address: 10510 MANCHESTER RD, KIRKWOOD, 63122  
CLARK ANIMAL HOSPITAL.

All comments must be received by Wednesday, April 10



# ***We Want Your Comments***



## ***On the Manchester Road resurfacing between Lindbergh and Big Bend***

Please provide us with your written suggestions or comments by turning them in today or by mailing to:

**Andrew Gates, Community Relations  
Missouri Department of Transportation  
1590 Woodlake Drive  
Chesterfield, MO 63017-5712**

**E-mail comments to: [Andrew.Gates@modot.mo.gov](mailto:Andrew.Gates@modot.mo.gov)**

My comments include (*please check all that apply*):

- ☐ Questions/comments about the resurfacing project
- ☐ Questions/comments about sidewalk improvements
- ☐ Questions/comments about access to businesses or properties
- ☐ Questions/comments about property/easement acquisition
- ☒ Are there other issues MoDOT should consider? If so, please state them below:

### **Comments:**

Why not bury the phone and powerlines? This will cost plenty,  
but will it cost less in the future?

Name (*print*):

Tom Hangrove

Address:

9024 Manchester

***All comments must be received by Wednesday, April 10***

#1

J6S1718 Public Comments  
Comments Received On-Line**COMPLETE**

**Collector:** Web Link 1 (Web Link)  
**Started:** Monday, March 26, 2018 6:18:26 PM  
**Last Modified:** Monday, March 26, 2018 6:24:56 PM  
**Time Spent:** 00:06:30  
**IP Address:** 24.107.150.76

---

Page 1

**Q1** Please provide the following information (all fields must be filled)

Name	Robert Kruger
Address	105 Elm Ave
City/Town	Glendale
State/Province	MO
ZIP/Postal Code	63122

---

**Q2** Which of the following best describes you?

Respondent skipped this question

**Q3** In general, I:

Have comments or questions about the resurfacing project

**Q4** Please share your thoughts about the project.

Asphalt surface eastbound near Sappington just west of intersection continually buckles in the heat as heavy vehicles brake as they approach this intersection. Repairs never last, would it not make sense for this portion of roadway to be concrete to keep this from re-occurring?

---

**Q5** Are there any other issues MoDOT should consider?

No.

**Q6** Please add me to your e-mail update list on this project (must provide e-mail below).

No

**Q7** The following contact information is optional

Respondent skipped this question

#2

J6S1718 Public Comments  
Comments Received On-Line**COMPLETE**

**Collector:** Web Link 1 (Web Link)  
**Started:** Monday, March 26, 2018 9:59:21 PM  
**Last Modified:** Monday, March 26, 2018 10:08:30 PM  
**Time Spent:** 00:09:08  
**IP Address:** 97.88.197.98

---

Page 1

**Q1** Please provide the following information (all fields must be filled)

Name	Walter Scull
Address	1300 Kirkham Ave
City/Town	Glendale
State/Province	MO - Missouri
ZIP/Postal Code	63122-3127

---

**Q2** Which of the following best describes you? Resident**Q3** In general, I: Would like to see the following improvements to the project (please see my comments below)**Q4** Please share your thoughts about the project.

I hope there will be a center turn lane added the entire length of this project. I commute on these areas daily and it is frustrating having to constantly wait for cars making left turns. I also got into a four car accident that caused over \$25,000 in damage due to Manchester's aged design.

---

**Q5** Are there any other issues MoDOT should consider?

Center turn lanes for sure! Thank you! Great sidewalks that are bike friendly and ADA compliant.

---

**Q6** Please add me to your e-mail update list on this project (must provide e-mail below). Yes**Q7** The following contact information is optional

Email Address	wallyworld3@juno.com
Phone Number	3145607205

---

On-Line Comments  
Page 2 of 51

2 / 51



#3

J6S1718 Public Comments  
Comments Received On-Line**COMPLETE**

**Collector:** Web Link 1 (Web Link)  
**Started:** Tuesday, March 27, 2018 6:48:21 AM  
**Last Modified:** Tuesday, March 27, 2018 6:50:54 AM  
**Time Spent:** 00:02:32  
**IP Address:** 24.217.197.33

---

Page 1

**Q1** Please provide the following information (all fields must be filled)

Name	Michael
Address	Lachtrup
Address 2	4501 Lindell
City/Town	St. Louis
State/Province	Mo.
ZIP/Postal Code	63108

---

**Q2** Which of the following best describes you? **Commuter****Q3** In general, I: **Respondent skipped this question****Q4** Please share your thoughts about the project.

Bike lanes. Please include bike lanes.

**Q5** Are there any other issues MoDOT should consider?

Dedicated bike lanes on all future MDOT projects.

**Q6** Please add me to your e-mail update list on this project (must provide e-mail below). **Respondent skipped this question****Q7** The following contact information is optional **Respondent skipped this question**

#4

J6S1718 Public Comments  
Comments Received On-Line**COMPLETE**

**Collector:** Web Link 1 (Web Link)  
**Started:** Tuesday, March 27, 2018 10:38:32 AM  
**Last Modified:** Tuesday, March 27, 2018 10:40:29 AM  
**Time Spent:** 00:01:57  
**IP Address:** 71.14.238.146

---

Page 1

**Q1** Please provide the following information (all fields must be filled)

Name	William Winter
Address	740 Edwin Ave
City/Town	St. Louis
State/Province	MISSOURI MO
ZIP/Postal Code	63122

---

**Q2** Which of the following best describes you? Resident**Q3** In general, I: Would like to see the following improvements to the project (please see my comments below)**Q4** Please share your thoughts about the project.

The project should include opportunities for biking on Manchester. Bus stops need to be upgrade.

**Q5** Are there any other issues MoDOT should consider?

Partnering with Metro and other organizations to increase multi-modal use (biking and bus transit).

**Q6** Please add me to your e-mail update list on this project (must provide e-mail below). Respondent skipped this question**Q7** The following contact information is optional Respondent skipped this question

#5

J6S1718 Public Comments  
Comments Received On-Line**COMPLETE**

**Collector:** Web Link 1 (Web Link)  
**Started:** Tuesday, March 27, 2018 5:46:07 PM  
**Last Modified:** Tuesday, March 27, 2018 5:47:23 PM  
**Time Spent:** 00:01:16  
**IP Address:** 172.58.136.6

---

Page 1

**Q1** Please provide the following information (all fields must be filled)

Name	Adelina Mart
Address	7601 Weaver Ave
City/Town	Maplewood
State/Province	Missouri
ZIP/Postal Code	63143

---

**Q2** Which of the following best describes you? Resident**Q3** In general, I: Would like to see the following improvements to the project (please see my comments below)**Q4** Please share your thoughts about the project. Respondent skipped this question**Q5** Are there any other issues MoDOT should consider?

Add bike lanes!!!

**Q6** Please add me to your e-mail update list on this project (must provide e-mail below). No**Q7** The following contact information is optional

Email Address	decciomart@gmail.com
Phone Number	4258296854

---

#6

J6S1718 Public Comments  
Comments Received On-Line**COMPLETE**

**Collector:** Web Link 1 (Web Link)  
**Started:** Tuesday, March 27, 2018 6:00:14 PM  
**Last Modified:** Tuesday, March 27, 2018 6:05:49 PM  
**Time Spent:** 00:05:34  
**IP Address:** 24.107.153.250

---

Page 1

**Q1** Please provide the following information (all fields must be filled)

Name	Paul Markowitz
Address	74 Frederick Lane
City/Town	Glendale
State/Province	MO
ZIP/Postal Code	63122

---

**Q2** Which of the following best describes you? Resident**Q3** In general, I: Would like to see the following improvements to the project (please see my comments below)**Q4** Please share your thoughts about the project.

A sidewalk is desperately needed along the south side of Manchester Rd. between Monier Place and Warson Woods Place. There is frequent pedestrian traffic exiting/entering Frederick Lane, and no crosswalk to cross Manchester.

---

**Q5** Are there any other issues MoDOT should consider?

Add an additional crosswalk and walk signal in the same vicinity.

---

**Q6** Please add me to your e-mail update list on this project (must provide e-mail below). Yes**Q7** The following contact information is optional

Email Address	pmarkow@yahoo.com
Phone Number	3149623142

---

#7

J6S1718 Public Comments  
Comments Received On-Line**COMPLETE**

**Collector:** Web Link 1 (Web Link)  
**Started:** Tuesday, March 27, 2018 6:12:47 PM  
**Last Modified:** Tuesday, March 27, 2018 6:25:46 PM  
**Time Spent:** 00:12:58  
**IP Address:** 97.88.195.160

---

Page 1

**Q1** Please provide the following information (all fields must be filled)

Name	Emily Borgel
Address	9719 Stanley Road
City/Town	Rock Hill
State/Province	MO
ZIP/Postal Code	63119

---

**Q2** Which of the following best describes you? Resident**Q3** In general, I: Would like to see the following improvements to the project (please see my comments below)**Q4** Please share your thoughts about the project.

I am pleased to hear that sidewalks will be updated/upgraded to meet ADA standards. I always felt that walking along Manchester to get to business was a risky proposition without clearly defined sidewalks.

---

**Q5** Are there any other issues MoDOT should consider?

Will you consider putting in a pedestrian cross walk between North Rock Hill and Martha Ave on Manchester so that pedestrians and users of public transportation have a safe place to cross Manchester to get to and from the restaurants?

---

**Q6** Please add me to your e-mail update list on this project (must provide e-mail below). Yes**Q7** The following contact information is optional

Email Address	emilyj1967@hotmail.com
---------------	------------------------

---

#8

J6S1718 Public Comments  
Comments Received On-Line**COMPLETE**

**Collector:** Web Link 1 (Web Link)  
**Started:** Tuesday, March 27, 2018 6:48:30 PM  
**Last Modified:** Tuesday, March 27, 2018 7:04:27 PM  
**Time Spent:** 00:15:57  
**IP Address:** 208.94.184.250

Page 1

**Q1** Please provide the following information (all fields must be filled)

Name	MIKE COHEN
Address	2848 MANDERLY DRIVE
City/Town	BRENTWOOD
State/Province	Missouri
ZIP/Postal Code	63144

**Q2** Which of the following best describes you? **Resident****Q3** In general, I: **Would like to see the following improvements to the project (please see my comments below)****Q4** Please share your thoughts about the project.

The overall surface condition of Manchester road between McKnight and Hanley is not too harsh currently. To be sure, the sidewalks and curbs need to be repaired and made ADA compliant. To me, this project is barely a band-aid for this stretch of road. Manchester needs to be widened. Electric and telecom utilities need to be moved underground instead of the antiquated aerial design that's existed for the last 75 years. A center turn lane needs to be added. I understand that this would entail far greater expense. However, it won't become any less expensive into the future. Why spend the \$\$ on a temporary solution that might only be a minor aesthetic improvement for another decade? This is not a long term solution to the issues with the section of Manchester Road that runs thru Brentwood. We need a comprehensive, long term plan to modernize this stretch. Why not allocate the necessary funds to do a thorough redesign instead of a partial remedy? Wouldn't that be a wiser use of MODOT's budget and our tax dollars in the long run?

**Q5** Are there any other issues MoDOT should consider? **Respondent skipped this question****Q6** Please add me to your e-mail update list on this project (must provide e-mail below). **Yes**

**Q7** The following contact information is optional

J6S1718 Public Comments  
Comments Received On-Line

Email Address

cohen\_mike1@yahoo.com

Phone Number

3147248310

---



#9

J6S1718 Public Comments  
Comments Received On-Line**COMPLETE**

**Collector:** Web Link 1 (Web Link)  
**Started:** Wednesday, March 28, 2018 8:20:24 AM  
**Last Modified:** Wednesday, March 28, 2018 8:22:34 AM  
**Time Spent:** 00:02:10  
**IP Address:** 162.203.68.35

---

Page 1

**Q1** Please provide the following information (all fields must be filled)

Name	Rita Tintera
Address	Center for Hearing & Speech
Address 2	9835 Manchester Road
City/Town	St. Louis
State/Province	MO
ZIP/Postal Code	63119

---

**Q2** Which of the following best describes you? **Business Owner**

---

**Q3** In general, I: **Respondent skipped this question**

---

**Q4** Please share your thoughts about the project.

Concerns about losing our some of our very limited parking spaces.

**Q5** Are there any other issues MoDOT should consider? **Respondent skipped this question**

---

**Q6** Please add me to your e-mail update list on this project (must provide e-mail below). **Yes**

---

**Q7** The following contact information is optional

Email Address	tinterar@chsstl.org
Phone Number	3147375090

---

#10

J6S1718 Public Comments  
Comments Received On-Line**COMPLETE**

**Collector:** Web Link 1 (Web Link)  
**Started:** Wednesday, March 28, 2018 10:44:54 PM  
**Last Modified:** Wednesday, March 28, 2018 10:59:54 PM  
**Time Spent:** 00:15:00  
**IP Address:** 24.107.153.250

---

Page 1

**Q1** Please provide the following information (all fields must be filled)

Name	<b>P. Markowitz</b>
Address	<b>74 Frederick Lane</b>
City/Town	<b>St. Louis</b>
State/Province	<b>Mo</b>
ZIP/Postal Code	<b>63122</b>

---

**Q2** Which of the following best describes you? **Resident****Q3** In general, I: **Would like to see the following improvements to the project (please see my comments below)****Q4** Please share your thoughts about the project.

Replace the fence at Frederick Lane (south side across from Dierbergs) with an aesthetic, sound-blocking wall. A lot of road noise goes through that fence. You will see this is the only part of the project where residential lots back directly to Manchester.

---

**Q5** Are there any other issues MoDOT should consider?

Widen the south shoulder in this section too, to allow a real sidewalk. Very dangerous to walk on this little strip, but there is no choice.

---

**Q6** Please add me to your e-mail update list on this project (must provide e-mail below). **No****Q7** The following contact information is optional

Phone Number	<b>3149623142</b>
--------------	-------------------

---

#11

J6S1718 Public Comments  
Comments Received On-Line**COMPLETE**

**Collector:** Web Link 1 (Web Link)  
**Started:** Thursday, March 29, 2018 8:20:17 AM  
**Last Modified:** Thursday, March 29, 2018 8:23:32 AM  
**Time Spent:** 00:03:15  
**IP Address:** 162.236.94.160

---

Page 1

**Q1** Please provide the following information (all fields must be filled)

Name	E.G. McCandless
Address	930 ROCHDALE DRIVE
City/Town	ST. LOUIS
State/Province	MO
ZIP/Postal Code	63122

---

**Q2** Which of the following best describes you? **Resident****Q3** In general, I: **Would like to see the following improvements to the project (please see my comments below)****Q4** Please share your thoughts about the project.

As a resident and regular driver on Manchester road between Lindbergh and Big Bend, I am wondering if the need for a center turn lane is being addressed in the upcoming project. Thank you.

---

**Q5** Are there any other issues MoDOT should consider? **Respondent skipped this question****Q6** Please add me to your e-mail update list on this project (must provide e-mail below). **Yes****Q7** The following contact information is optional

Email Address	libby@greyarcher.net
---------------	----------------------

---

#12

J6S1718 Public Comments  
Comments Received On-Line**COMPLETE**

**Collector:** Web Link 1 (Web Link)  
**Started:** Friday, March 30, 2018 9:08:38 AM  
**Last Modified:** Friday, March 30, 2018 9:13:43 AM  
**Time Spent:** 00:05:05  
**IP Address:** 24.107.150.40

---

Page 1

**Q1** Please provide the following information (all fields must be filled)

Name	Kendra Bertelsen
Address	820 Blossom Lane
City/Town	Rock Hill
State/Province	MO
ZIP/Postal Code	63119

---

**Q2** Which of the following best describes you? **Resident****Q3** In general, I: **Have comments or questions about sidewalk improvements****Q4** Please share your thoughts about the project.

I am very excited to see more sidewalks along Manchester, especially in Rock Hill where I live. Will the improvements include a pedestrian signal at Berry?

---

**Q5** Are there any other issues MoDOT should consider?

Sidewalk connectivity and access (ramps: great for strollers too!) is as important as increasing its length.

---

**Q6** Please add me to your e-mail update list on this project (must provide e-mail below). **Yes****Q7** The following contact information is optional

Email Address	kb4dragon@gmail.com
Phone Number	3146044535

---

#13

J6S1718 Public Comments  
Comments Received On-Line**COMPLETE**

**Collector:** Web Link 1 (Web Link)  
**Started:** Friday, March 30, 2018 6:23:53 PM  
**Last Modified:** Friday, March 30, 2018 6:34:28 PM  
**Time Spent:** 00:10:35  
**IP Address:** 136.61.7.99

---

Page 1

**Q1** Please provide the following information (all fields must be filled)

Name	<b>Brent Hugh</b>
Address	<b>2208 Missouri Blvd, Ste. 102 #200</b>
City/Town	<b>Jefferson City</b>
State/Province	<b>MO</b>
ZIP/Postal Code	<b>65109</b>

---

**Q2** Which of the following best describes you?

Other (please specify):  
Statewide bicycle & pedestrian advocacy organization with over 5000 members across Missouri, including a large number in St. Louis County

---

**Q3** In general, I:

**Would like to see the following improvements to the project (please see my comments below)**

---

**Q4** Please share your thoughts about the project.

This corridor is part of the national Bicycle Route 66 corridor (Adventure Cycling Association) and U.S. Bicycle Route 66 (AASHTO, application currently in progress by MoDOT). For that reason and others, the corridor has a high amount of bicycle traffic and an even higher amount of latent demand for bicycle access. The project needs to include very good bicycle accommodations in order to meet the needs of current bicycle users.

---

**Q5** Are there any other issues MoDOT should consider?

According to MoDOT's 2015 traffic volume survey, traffic on this segment ranges from 12,205 to 17968. This makes it a perfect candidate for a lane redistribution similar to that of the South Grand Boulevard Great Streets Initiative. That project had an amazing positive impact on the businesses and neighborhoods along South Grand and the economic development of the entire region surrounding the road. A similar approach to this section of Manchester Road could have similar very positive results for the adjoining communities while also providing greatly enhance mobility and safety for people who walk and bicycle. At the same time, the corridor's appeal as part of the national U.S. Bicycle Route 66 would be enhanced greatly. One thing we ask is that you consider this idea seriously. Meet with engineers and planners who implemented the South Grand Great Streets initiative. See what went wrong there and what worked well. Perhaps do a trial project on Manchester similar to the pilot project that started the South Grand project.

---

On-Line Comments

Page 14 of 51  
14 / 51

**Q6** Please add me to your e-mail update list on this project (must provide e-mail below).

Yes

J6S1718 Public Comments  
Comments Received On-Line

---

**Q7** The following contact information is optional

Email Address

director@mobikefed.org

Phone Number

816-695-6736

---

#14

J6S1718 Public Comments  
Comments Received On-Line**COMPLETE**

**Collector:** Web Link 1 (Web Link)  
**Started:** Wednesday, April 04, 2018 12:28:08 PM  
**Last Modified:** Wednesday, April 04, 2018 12:30:29 PM  
**Time Spent:** 00:02:20  
**IP Address:** 69.153.173.254

Page 1

**Q1** Please provide the following information (all fields must be filled)

Name	Joseph Madden
Address	2134 Oregon Ave
City/Town	St Louis
State/Province	MO
ZIP/Postal Code	63104

**Q2** Which of the following best describes you? Employee in the area**Q3** In general, I: Would like to see the following improvements to the project (please see my comments below)**Q4** Please share your thoughts about the project.

We really need to be able to have better bicycle infrastructure on this road. Infrastructure is great from downtown STL to downtown maplewood but past that it is non existent. With the direction of St. Louis County's Complete Streets Ordinance, The Gateway Bike Plan, and Adventure Cycling Association's Bicycle Route 66, it seems this is something that needs to be considered.

**Q5** Are there any other issues MoDOT should consider? Respondent skipped this question**Q6** Please add me to your e-mail update list on this project (must provide e-mail below). Yes**Q7** The following contact information is optional

Email Address	obj63mc@gmail.com
Phone Number	3145182630



#15

J6S1718 Public Comments  
Comments Received On-Line**COMPLETE**

**Collector:** Web Link 1 (Web Link)  
**Started:** Wednesday, April 04, 2018 12:15:30 PM  
**Last Modified:** Wednesday, April 04, 2018 12:30:55 PM  
**Time Spent:** 00:15:24  
**IP Address:** 24.182.136.163

---

Page 1

**Q1** Please provide the following information (all fields must be filled)

Name	Dave Herholz
Address	1837 Russell Blvd
City/Town	St. Louis
State/Province	Mo
ZIP/Postal Code	63104

---

**Q2** Which of the following best describes you? Employee in the area**Q3** In general, I: Have comments or questions about the resurfacing project**Q4** Please share your thoughts about the project.

I would like to see bike lanes added. There are few good East-West bike ways South of I-64 and this would be a good one to continue West from the city/Maplewood.

---

**Q5** Are there any other issues MoDOT should consider? Respondent skipped this question**Q6** Please add me to your e-mail update list on this project (must provide e-mail below). Yes**Q7** The following contact information is optional

Email Address	dherholz@sbcglobal.net
Phone Number	3143991945

---

#16

J6S1718 Public Comments  
Comments Received On-Line**COMPLETE**

**Collector:** Web Link 1 (Web Link)  
**Started:** Wednesday, April 04, 2018 12:29:25 PM  
**Last Modified:** Wednesday, April 04, 2018 12:31:50 PM  
**Time Spent:** 00:02:24  
**IP Address:** 68.184.235.219

---

Page 1

**Q1** Please provide the following information (all fields must be filled)

Name	Amy Klein
Address	3410 Juniata St
City/Town	St. Louis
State/Province	MO
ZIP/Postal Code	63118

---

**Q2** Which of the following best describes you? Resident**Q3** In general, I: Would like to see the following improvements to the project (please see my comments below)**Q4** Please share your thoughts about the project. Respondent skipped this question**Q5** Are there any other issues MoDOT should consider?

Please ensure there are bike lanes on the entire stretch. I use Manchester to commute via bike and it become very uncomfortable and stressful to bike once the lane ends. Would also love more trees along the road to make the commute more pleasant.

---

**Q6** Please add me to your e-mail update list on this project (must provide e-mail below). Respondent skipped this question**Q7** The following contact information is optional Respondent skipped this question

#17

J6S1718 Public Comments  
Comments Received On-Line**COMPLETE**

**Collector:** Web Link 1 (Web Link)  
**Started:** Wednesday, April 04, 2018 12:41:01 PM  
**Last Modified:** Wednesday, April 04, 2018 12:51:26 PM  
**Time Spent:** 00:10:25  
**IP Address:** 128.252.156.224

Page 1

**Q1** Please provide the following information (all fields must be filled)

Name	<b>Bob Chekoudjian</b>
Address	<b>9418 parkside drive</b>
City/Town	<b>saintlouis</b>
State/Province	<b>MO</b>
ZIP/Postal Code	<b>63144</b>

**Q2** Which of the following best describes you? **Resident****Q3** In general, I: **Would like to see the following improvements to the project (please see my comments below)****Q4** Please share your thoughts about the project.

I bike commute to work, almost every day. It's ironic that when I get home at night, I then have to get in my car to go to places on Manchester Rd/Hwy 100 because it is absolutely not safe for my to transport on my bike on that road. Even more ironic is that you have share the road signs on this stretch of Hwy. Have you tried riding your bike on Manchester? Do you have any clue on how to provide and accommodate for a variety of transportation methods? I believe your name is Missouri Department of Transportation, not Missouri Department of Motor Vehicle Transportation. I'd like to see tax dollars spent to accommodate ALL users and potential users of our roadways. I see this as a once in a generation project. If you extended the easements several more feet on each side of the road, you could install 5' bike lanes. I know many recreational and commuter cyclists would love to have the opportunity to use Hwy 100 the way they prefer to, by bike. It would be a benefit to the retail and other businesses along this stretch of Hwy 100. You need to stop thinking of all transportation as something that happens by motor vehicles.

**Q5** Are there any other issues MoDOT should consider?

It would also be nice to see bike lanes added through to the Metrolink Station and the Maplewood downtown district.

**Q6** Please add me to your e-mail update list on this project (must provide e-mail below). **Yes**

**Q7** The following contact information is optional

J6S1718 Public Comments  
Comments Received On-Line

Email Address

bapkan@wustl.edu

Phone Number

3149358429

---

#18

J6S1718 Public Comments  
Comments Received On-Line**COMPLETE**

**Collector:** Web Link 1 (Web Link)  
**Started:** Wednesday, April 04, 2018 12:52:45 PM  
**Last Modified:** Wednesday, April 04, 2018 12:54:05 PM  
**Time Spent:** 00:01:20  
**IP Address:** 107.143.156.53

---

Page 1

**Q1** Please provide the following information (all fields must be filled)

City/Town	<b>St. Louis</b>
State/Province	<b>Mo</b>
ZIP/Postal Code	<b>63110</b>

---

**Q2** Which of the following best describes you? **Resident****Q3** In general, I: **Have comments or questions about the resurfacing project****Q4** Please share your thoughts about the project.

Bike lanes have been planned for. This is a great opportunity to implement this!

**Q5** Are there any other issues MoDOT should consider?

Connections and additional pedestrian and bicycle amenities near MetroLink

**Q6** Please add me to your e-mail update list on this project (must provide e-mail below). **Respondent skipped this question****Q7** The following contact information is optional **Respondent skipped this question**

#19

J6S1718 Public Comments  
Comments Received On-Line**COMPLETE**

**Collector:** Web Link 1 (Web Link)  
**Started:** Wednesday, April 04, 2018 12:55:54 PM  
**Last Modified:** Wednesday, April 04, 2018 12:57:36 PM  
**Time Spent:** 00:01:42  
**IP Address:** 205.185.189.238

---

Page 1

**Q1** Please provide the following information (all fields must be filled)

Name	David Pokorny
Address	1321 Marbendale Court
City/Town	Kirkwood
State/Province	MO
ZIP/Postal Code	63122

---

**Q2** Which of the following best describes you? **Commuter****Q3** In general, I: **Have comments or questions about the resurfacing project****Q4** Please share your thoughts about the project.

Manchester would really benefit from more bike friendly improvements. It could be a better East-West commuter route and help local cyclists.

---

**Q5** Are there any other issues MoDOT should consider? **Respondent skipped this question****Q6** Please add me to your e-mail update list on this project (must provide e-mail below). **Respondent skipped this question****Q7** The following contact information is optional

Email Address	locopoko@yahoo.com
---------------	--------------------

---

#20

J6S1718 Public Comments  
Comments Received On-Line**COMPLETE**

**Collector:** Web Link 1 (Web Link)  
**Started:** Wednesday, April 04, 2018 1:20:46 PM  
**Last Modified:** Wednesday, April 04, 2018 1:25:45 PM  
**Time Spent:** 00:04:59  
**IP Address:** 162.198.27.96

---

Page 1

**Q1** Please provide the following information (all fields must be filled)

Name	James Breihan
Address	3445 Commonwealth Ave
City/Town	Maplewood
State/Province	MO
ZIP/Postal Code	63143

---

**Q2** Which of the following best describes you? **Resident****Q3** In general, I: **Would like to see the following improvements to the project (please see my comments below)****Q4** Please share your thoughts about the project.

I would like bike lanes to be added to be added along Manchester in this section. It would make the road safer and more accessible for people who live in the community, especially for school agreed kids and other people who don't have access to a car or who want to be able to ride their bikes.

---

**Q5** Are there any other issues MoDOT should consider?

No turn on red southbound at Big Bend. High school students are being hit by cars as they cross the street by the QT because drivers are not checking for pedestrians.

---

**Q6** Please add me to your e-mail update list on this project (must provide e-mail below). **Yes****Q7** The following contact information is optional

Email Address	jimbrehian@gmail.com
Phone Number	4104048251

---

On-Line Comments  
Page 23 of 51

23 / 51



#21

J6S1718 Public Comments  
Comments Received On-Line**COMPLETE**

**Collector:** Web Link 1 (Web Link)  
**Started:** Wednesday, April 04, 2018 1:35:21 PM  
**Last Modified:** Wednesday, April 04, 2018 1:39:37 PM  
**Time Spent:** 00:04:15  
**IP Address:** 107.77.209.9

---

Page 1

**Q1** Please provide the following information (all fields must be filled)

Name	<b>MJ</b>
Address	<b>Stoeker</b>
Address 2	<b>12140 Autumn Lakes Dr</b>
City/Town	<b>Maryland Heights</b>
State/Province	<b>MO</b>
ZIP/Postal Code	<b>63043</b>

---

**Q2** Which of the following best describes you?

Other (please specify):  
Economic Consumer travels by bike

---

**Q3** In general, I:

**Would like to see the following improvements to the project (please see my comments below)**

---

**Q4** Please share your thoughts about the project.

Bike lanes need to be part of this project

---

**Q5** Are there any other issues MoDOT should consider?

**Respondent skipped this question**

---

**Q6** Please add me to your e-mail update list on this project (must provide e-mail below).

**Yes**

---

**Q7** The following contact information is optional

Email Address	<b>bicyclechickmj@gmail.com</b>
---------------	---------------------------------

---

#22

J6S1718 Public Comments  
Comments Received On-Line**COMPLETE**

**Collector:** Web Link 1 (Web Link)  
**Started:** Wednesday, April 04, 2018 1:24:41 PM  
**Last Modified:** Wednesday, April 04, 2018 1:43:10 PM  
**Time Spent:** 00:18:28  
**IP Address:** 68.188.9.110

---

Page 1

**Q1** Please provide the following information (all fields must be filled)

Name	Sean Murphy
Address	1228 Oakshire Ln
City/Town	Kirkwood
State/Province	Missouri
ZIP/Postal Code	63122

---

**Q2** Which of the following best describes you? **Commuter****Q3** In general, I: **Would like to see the following improvements to the project (please see my comments below)****Q4** Please share your thoughts about the project.

There should be a priority to adding marked bicycle lanes.

**Q5** Are there any other issues MoDOT should consider?

Bicycle access is especially important to the Metrolink station. Also the Black creek and Deer creek make taking other routes impractical.

**Q6** Please add me to your e-mail update list on this project (must provide e-mail below). **Respondent skipped this question****Q7** The following contact information is optionalEmail Address **scmsneezy@gmail.com**

#23

J6S1718 Public Comments  
Comments Received On-Line**COMPLETE**

**Collector:** Web Link 1 (Web Link)  
**Started:** Wednesday, April 04, 2018 2:38:58 PM  
**Last Modified:** Wednesday, April 04, 2018 2:52:04 PM  
**Time Spent:** 00:13:06  
**IP Address:** 107.220.198.22

Page 1

**Q1** Please provide the following information (all fields must be filled)

Name	Michael Griffin
Address	10921 Clydesdale Manors Court
City/Town	Saint Louis
State/Province	MO
ZIP/Postal Code	63123

**Q2** Which of the following best describes you? Resident**Q3** In general, I: Would like to see the following improvements to the project (please see my comments below)**Q4** Please share your thoughts about the project.

Given how infrequently major roads like Manchester are repaved, the decision not to make changes to the lanes is disappointing. The St. Louis area is overbuilt for its density of residents and the widths of its roads are now excessive. MODoT should be adding protected bike lanes along major roads like this in order to update them for the 21st century to try to keep pace with more dynamic cities with higher growth and more robust economies. Forcing utilitarian and recreational cyclists to ride with cars and trucks driving sometimes 40 to 50 mph on Manchester is a good way to ensure more traffic fatalities and fewer route options for cyclists in the area.

**Q5** Are there any other issues MoDOT should consider? Respondent skipped this question**Q6** Please add me to your e-mail update list on this project (must provide e-mail below). Respondent skipped this question**Q7** The following contact information is optional

Email Address	michael.p.griffin1@gmail.com
Phone Number	6365799511

#24

J6S1718 Public Comments  
Comments Received On-Line**COMPLETE**

**Collector:** Web Link 1 (Web Link)  
**Started:** Wednesday, April 04, 2018 3:13:25 PM  
**Last Modified:** Wednesday, April 04, 2018 3:15:04 PM  
**Time Spent:** 00:01:39  
**IP Address:** 71.81.82.196

---

Page 1

**Q1** Please provide the following information (all fields must be filled)

Name	Laura Thake
Address	9027 Coral Drive
City/Town	Aftton
State/Province	MO
ZIP/Postal Code	63123

---

**Q2** Which of the following best describes you? **Commuter****Q3** In general, I: **Have comments or questions about the resurfacing project****Q4** Please share your thoughts about the project.

Why aren't you including any bike lanes? Just curious, I see brave souls on Manchester all the time, trying to safely get where they're going using pedal power, it looks terrifying to me!

---

**Q5** Are there any other issues MoDOT should consider? **Respondent skipped this question****Q6** Please add me to your e-mail update list on this project (must provide e-mail below). **Respondent skipped this question****Q7** The following contact information is optional **Respondent skipped this question**

#25

J6S1718 Public Comments  
Comments Received On-Line**COMPLETE**

**Collector:** Web Link 1 (Web Link)  
**Started:** Wednesday, April 04, 2018 3:22:19 PM  
**Last Modified:** Wednesday, April 04, 2018 3:23:26 PM  
**Time Spent:** 00:01:07  
**IP Address:** 199.188.210.4

---

Page 1

**Q1** Please provide the following information (all fields must be filled)

Name	Nathan Tenholder
Address	5024 Kain
City/Town	St. Louis
State/Province	MO
ZIP/Postal Code	63119

---

**Q2** Which of the following best describes you? Resident**Q3** In general, I: Would like to see the following improvements to the project (please see my comments below)**Q4** Please share your thoughts about the project.

need bike lanes added

**Q5** Are there any other issues MoDOT should consider? Respondent skipped this question**Q6** Please add me to your e-mail update list on this project (must provide e-mail below). No**Q7** The following contact information is optional Respondent skipped this question

#26

J6S1718 Public Comments  
Comments Received On-Line**COMPLETE**

**Collector:** Web Link 1 (Web Link)  
**Started:** Wednesday, April 04, 2018 4:38:32 PM  
**Last Modified:** Wednesday, April 04, 2018 4:39:36 PM  
**Time Spent:** 00:01:03  
**IP Address:** 47.50.221.218

---

Page 1

**Q1** Please provide the following information (all fields must be filled)

Name	Amy E Breihan
Address	3445 Commonwealth Avenue
City/Town	Maplewood
State/Province	MO
ZIP/Postal Code	63143

---

**Q2** Which of the following best describes you? Resident**Q3** In general, I: Would like to see the following improvements to the project (please see my comments below)**Q4** Please share your thoughts about the project.

I would love to see protected bike lanes added along Manchester, and steps taken to ensure that sidewalks and intersections are accessible for individuals with disabilities or people with young children.

---

**Q5** Are there any other issues MoDOT should consider? Respondent skipped this question**Q6** Please add me to your e-mail update list on this project (must provide e-mail below). Yes**Q7** The following contact information is optional

Email Address	amyebreihan@gmail.com
Phone Number	6419908133

---



#27

J6S1718 Public Comments  
Comments Received On-Line**COMPLETE**

**Collector:** Web Link 1 (Web Link)  
**Started:** Wednesday, April 04, 2018 5:12:47 PM  
**Last Modified:** Wednesday, April 04, 2018 5:17:44 PM  
**Time Spent:** 00:04:56  
**IP Address:** 174.234.134.37

---

Page 1

**Q1** Please provide the following information (all fields must be filled)

Name	Justin Woodard
Address	4546 Maryland Ave
City/Town	St Louis
State/Province	MO
ZIP/Postal Code	63108

---

**Q2** Which of the following best describes you?

Business Owner

---

**Q3** In general, I:

Would like to see the following improvements to the project (please see my comments below)

---

**Q4** Please share your thoughts about the project.

As a business owner, I am so happy with the improvrmnts planned. Overall it will be easier and safer for my employees to get to work.

---

**Q5** Are there any other issues MoDOT should consider?

Some employees of mine would like the option of riding their bike to work. As planned, the project doesn't have proper and safe bike lanes considered. I would like to see an alternate proposal that includes safe bike lanes.

---

**Q6** Please add me to your e-mail update list on this project (must provide e-mail below).

No

---

**Q7** The following contact information is optional

Email Address	jwoodard@woodard247.com
Phone Number	3149619102

---

#28

J6S1718 Public Comments  
Comments Received On-Line**COMPLETE**

**Collector:** Web Link 1 (Web Link)  
**Started:** Wednesday, April 04, 2018 7:42:11 PM  
**Last Modified:** Wednesday, April 04, 2018 7:44:58 PM  
**Time Spent:** 00:02:47  
**IP Address:** 76.205.3.247

Page 1

**Q1** Please provide the following information (all fields must be filled)

Name	John Becker
Address	7729 Weston Pl
City/Town	Richmond Heights
State/Province	MO
ZIP/Postal Code	63117

**Q2** Which of the following best describes you? Resident**Q3** In general, I: Would like to see the following improvements to the project (please see my comments below)**Q4** Please share your thoughts about the project.

Please incorporate at least semi-protected bike lanes, or a bike lane between the parked cars and the sidewalk. This will encourage people to get out and explore Manchester in a safer manner.

**Q5** Are there any other issues MoDOT should consider? Respondent skipped this question**Q6** Please add me to your e-mail update list on this project (must provide e-mail below). No**Q7** The following contact information is optional Respondent skipped this question

#29

J6S1718 Public Comments  
Comments Received On-Line**COMPLETE**

**Collector:** Web Link 1 (Web Link)  
**Started:** Wednesday, April 04, 2018 8:02:22 PM  
**Last Modified:** Wednesday, April 04, 2018 8:05:10 PM  
**Time Spent:** 00:02:47  
**IP Address:** 24.107.138.26

---

Page 1

**Q1** Please provide the following information (all fields must be filled)

Name	William Rein
Address	1037 JoAnna Ave.
City/Town	Saint Louis
State/Province	MO
ZIP/Postal Code	63122

---

**Q2** Which of the following best describes you? Resident**Q3** In general, I: Have comments or questions about sidewalk improvements**Q4** Please share your thoughts about the project.

Please make it a more walkable corridor. I wish you could provide a much larger separation between the roadway and sidewalks but I understand you're limited by budget and physical space.

---

**Q5** Are there any other issues MoDOT should consider?

Thank you!

**Q6** Please add me to your e-mail update list on this project (must provide e-mail below). Yes**Q7** The following contact information is optional

Email Address	williamjrein@outlook.com
---------------	--------------------------

---

#30

J6S1718 Public Comments  
Comments Received On-Line**COMPLETE**

**Collector:** Web Link 1 (Web Link)  
**Started:** Wednesday, April 04, 2018 8:24:45 PM  
**Last Modified:** Wednesday, April 04, 2018 8:27:35 PM  
**Time Spent:** 00:02:49  
**IP Address:** 35.129.8.83

---

Page 1

**Q1** Please provide the following information (all fields must be filled)

Name	marla hillier
Address	3000 arlmont
City/Town	st louis
State/Province	mo
ZIP/Postal Code	63121

---

<b>Q2</b> Which of the following best describes you?	Other (please specify): county resident
--	--

---

<b>Q3</b> In general, I:	Would like to see the following improvements to the project (please see my comments below)
--------------------------	--

---

**Q4** Please share your thoughts about the project.

please ensure bike lanes!

<b>Q5</b> Are there any other issues MoDOT should consider?	Respondent skipped this question
---	----------------------------------

---

<b>Q6</b> Please add me to your e-mail update list on this project (must provide e-mail below).	No
---	----

---

<b>Q7</b> The following contact information is optional	Respondent skipped this question
---	----------------------------------

---

#31

J6S1718 Public Comments  
Comments Received On-Line**COMPLETE**

**Collector:** Web Link 1 (Web Link)  
**Started:** Wednesday, April 04, 2018 8:45:07 PM  
**Last Modified:** Wednesday, April 04, 2018 8:49:34 PM  
**Time Spent:** 00:04:27  
**IP Address:** 174.86.19.15

---

Page 1

**Q1** Please provide the following information (all fields must be filled)

Name	Rebecca Hohm
ZIP/Postal Code	63116

---

**Q2** Which of the following best describes you? **Commuter****Q3** In general, I: **Have comments or questions about the resurfacing project****Q4** Please share your thoughts about the project.

Please ignore the crybaby bicycle riders wanting you to give up 2 lanes for bike paths. They can take an alternate less congested route or go to the park to ride. This stretch of roadway handles highway overflow which is extremely congested during rush hours. So please...ignore the bikers. They're on Facebook asking people to bother you by demanding lanes of their own. Their post is here: <https://www.facebook.com/Trailnet/posts/10155498980667759>

---

**Q5** Are there any other issues MoDOT should consider?

No

**Q6** Please add me to your e-mail update list on this project (must provide e-mail below). **No****Q7** The following contact information is optional **Respondent skipped this question**

#32

J6S1718 Public Comments  
Comments Received On-Line**COMPLETE**

**Collector:** Web Link 1 (Web Link)  
**Started:** Wednesday, April 04, 2018 9:37:17 PM  
**Last Modified:** Wednesday, April 04, 2018 9:39:14 PM  
**Time Spent:** 00:01:56  
**IP Address:** 99.46.202.180

---

Page 1

**Q1** Please provide the following information (all fields must be filled)

Name	Corinne Austin
Address	127 Madison Avenue
City/Town	Webster Groves
State/Province	MO
ZIP/Postal Code	63119

---

**Q2** Which of the following best describes you?

Respondent skipped this question

**Q3** In general, I:

Would like to see the following improvements to the project (please see my comments below)

**Q4** Please share your thoughts about the project.

The project should include bike lanes

**Q5** Are there any other issues MoDOT should consider?

Bike lanes.

**Q6** Please add me to your e-mail update list on this project (must provide e-mail below).

Yes

**Q7** The following contact information is optional

Email Address	corinnenorene@gmail.com
Phone Number	3145202324

---



#33

J6S1718 Public Comments  
Comments Received On-Line**COMPLETE**

**Collector:** Web Link 1 (Web Link)  
**Started:** Thursday, April 05, 2018 6:02:15 AM  
**Last Modified:** Thursday, April 05, 2018 6:05:33 AM  
**Time Spent:** 00:03:18  
**IP Address:** 174.234.130.30

---

Page 1

**Q1** Please provide the following information (all fields must be filled)

Name	<b>Bryan Carter</b>
Address	<b>463 S Clay Ave</b>
City/Town	<b>Kirkwood</b>
State/Province	<b>Mo</b>
ZIP/Postal Code	<b>63122</b>

---

**Q2** Which of the following best describes you? **Resident****Q3** In general, I: **Would like to see the following improvements to the project (please see my comments below)****Q4** Please share your thoughts about the project.

I think this is a needed project, however, I think it would be a shame if it was moved forward without adding bike lanes. I currently commute down Manchester every day. If there were bike lanes, I would commute by bicycle as much as possible. Currently it does not feel safe to ride on Manchester road.

---

**Q5** Are there any other issues MoDOT should consider? **Respondent skipped this question****Q6** Please add me to your e-mail update list on this project (must provide e-mail below). **No****Q7** The following contact information is optional **Respondent skipped this question**

#34

J6S1718 Public Comments  
Comments Received On-Line**COMPLETE**

**Collector:** Web Link 1 (Web Link)  
**Started:** Thursday, April 05, 2018 7:56:58 AM  
**Last Modified:** Thursday, April 05, 2018 7:58:55 AM  
**Time Spent:** 00:01:56  
**IP Address:** 12.232.140.2

---

Page 1

**Q1** Please provide the following information (all fields must be filled)

Name	Jim Michaels
Address	5352 Lansdowne
City/Town	St. Louis
State/Province	MO
ZIP/Postal Code	63109

---

**Q2** Which of the following best describes you? **Commuter****Q3** In general, I: **Would like to see the following improvements to the project (please see my comments below)****Q4** Please share your thoughts about the project.

Bike lanes need to be included - essential to the safety of the community

**Q5** Are there any other issues MoDOT should consider? **Respondent skipped this question****Q6** Please add me to your e-mail update list on this project (must provide e-mail below). **Respondent skipped this question****Q7** The following contact information is optionalEmail Address **james\_a\_michaels@yahoo.com**

#35

J6S1718 Public Comments  
Comments Received On-Line**COMPLETE**

**Collector:** Web Link 1 (Web Link)  
**Started:** Thursday, April 05, 2018 8:41:43 AM  
**Last Modified:** Thursday, April 05, 2018 8:43:08 AM  
**Time Spent:** 00:01:24  
**IP Address:** 97.91.190.37

---

Page 1

**Q1** Please provide the following information (all fields must be filled)

Name	Valerie Seppanen
Address	7313 Elm
Address 2	7313 Elm
City/Town	Maplewood
State/Province	Missouri
ZIP/Postal Code	63143

---

**Q2** Which of the following best describes you? Resident**Q3** In general, I: Would like to see the following improvements to the project (please see my comments below)

---

**Q4** Please share your thoughts about the project.I would love to see bike lanes.

---

**Q5** Are there any other issues MoDOT should consider? Respondent skipped this question

---

**Q6** Please add me to your e-mail update list on this project (must provide e-mail below). No

---

**Q7** The following contact information is optional

Email Address	Valbitter@gmail.com
---------------	---------------------

---

#36

J6S1718 Public Comments  
Comments Received On-Line**COMPLETE**

**Collector:** Web Link 1 (Web Link)  
**Started:** Thursday, April 05, 2018 9:43:19 AM  
**Last Modified:** Thursday, April 05, 2018 9:47:00 AM  
**Time Spent:** 00:03:41  
**IP Address:** 198.102.36.250

---

Page 1

**Q1** Please provide the following information (all fields must be filled)

Name	Gavin Rehkemper
Address	7423 Tulane Ave
City/Town	University City
State/Province	MO
ZIP/Postal Code	63130

---

**Q2** Which of the following best describes you? **Commuter****Q3** In general, I: **Would like to see the following improvements to the project (please see my comments below)****Q4** Please share your thoughts about the project.

Please consider adding bicycle lanes/facilities for all or at least part of the upgrades. please see <https://trailnet.org/2018/04/04/trailnet-advocacy-manchester-road-bicycle-facilities/>

---

**Q5** Are there any other issues MoDOT should consider? **Respondent skipped this question****Q6** Please add me to your e-mail update list on this project (must provide e-mail below). **Yes****Q7** The following contact information is optional

Email Address	<b><a href="mailto:gavreh@gmail.com">gavreh@gmail.com</a></b>
---------------	---

---

#37

J6S1718 Public Comments  
Comments Received On-Line**COMPLETE**

**Collector:** Web Link 1 (Web Link)  
**Started:** Thursday, April 05, 2018 10:16:32 AM  
**Last Modified:** Thursday, April 05, 2018 10:18:51 AM  
**Time Spent:** 00:02:19  
**IP Address:** 216.119.215.193

Page 1

**Q1** Please provide the following information (all fields must be filled)

Name	Emily Haynes
Address	2246 Blendon Pl
Address 2	2N
City/Town	St. Louis
State/Province	MO
ZIP/Postal Code	63143

**Q2** Which of the following best describes you? Resident**Q3** In general, I: Would like to see the following improvements to the project (please see my comments below)**Q4** Please share your thoughts about the project.

Necessary, but current approach is incomplete

**Q5** Are there any other issues MoDOT should consider?

MODOT should strongly consider adding bike lanes to Manchester Rd during this project

**Q6** Please add me to your e-mail update list on this project (must provide e-mail below). Yes**Q7** The following contact information is optional

Email Address haynesemilye@gmail.com

#38

J6S1718 Public Comments  
Comments Received On-Line**COMPLETE**

**Collector:** Web Link 1 (Web Link)  
**Started:** Thursday, April 05, 2018 10:33:21 AM  
**Last Modified:** Thursday, April 05, 2018 10:34:23 AM  
**Time Spent:** 00:01:02  
**IP Address:** 24.107.80.69

---

Page 1

**Q1** Please provide the following information (all fields must be filled)

Name	Una McGarry
Address	1289 Tammany Ln
Address 2	1289 Tammany Ln
City/Town	St. Louis
State/Province	MO
ZIP/Postal Code	63131

---

**Q2** Which of the following best describes you? Resident**Q3** In general, I: Would like to see the following improvements to the project (please see my comments below)

---

**Q4** Please share your thoughts about the project.Add a bike lane to make it safer for everyone!

---

**Q5** Are there any other issues MoDOT should consider? Respondent skipped this question

---

**Q6** Please add me to your e-mail update list on this project (must provide e-mail below). No

---

**Q7** The following contact information is optional

Email Address	mcgarryu@gmail.com
---------------	--------------------

---



#39

J6S1718 Public Comments  
Comments Received On-Line**COMPLETE**

**Collector:** Web Link 1 (Web Link)  
**Started:** Thursday, April 05, 2018 11:17:06 AM  
**Last Modified:** Thursday, April 05, 2018 11:18:50 AM  
**Time Spent:** 00:01:44  
**IP Address:** 12.104.17.126

---

Page 1

**Q1** Please provide the following information (all fields must be filled)

Name	Joe
Address	1221 Sandstone Dr
City/Town	St Louis
State/Province	MO
ZIP/Postal Code	63146

---

**Q2** Which of the following best describes you? Resident**Q3** In general, I: Would like to see the following improvements to the project (please see my comments below)**Q4** Please share your thoughts about the project.

I would like to see bike lanes added to improve the safety of riders

**Q5** Are there any other issues MoDOT should consider? Respondent skipped this question**Q6** Please add me to your e-mail update list on this project (must provide e-mail below). No**Q7** The following contact information is optional

Email Address riney125@gmail.com

#40

J6S1718 Public Comments  
Comments Received On-Line**COMPLETE**

**Collector:** Web Link 1 (Web Link)  
**Started:** Thursday, April 05, 2018 1:47:28 PM  
**Last Modified:** Thursday, April 05, 2018 1:49:56 PM  
**Time Spent:** 00:02:27  
**IP Address:** 47.50.194.34

---

Page 1

**Q1** Please provide the following information (all fields must be filled)

Name	Scott Ring
Address	1722 Connemara Drive
City/Town	Manchester
State/Province	MO
ZIP/Postal Code	63021

---

**Q2** Which of the following best describes you? Employee in the area**Q3** In general, I: Would like to see the following improvements to the project (please see my comments below)**Q4** Please share your thoughts about the project.

I don't feel that you have realized the full potential of this project as I think you could make the project better for little or no extra cost.

**Q5** Are there any other issues MoDOT should consider?

Bike Lanes. A place designated for bikes will increase biker and public safety

**Q6** Please add me to your e-mail update list on this project (must provide e-mail below). Yes**Q7** The following contact information is optional

Email Address	sring@woodard247.com
Phone Number	3145654481

---

#41

J6S1718 Public Comments  
Comments Received On-Line**COMPLETE**

**Collector:** Web Link 1 (Web Link)  
**Started:** Thursday, April 05, 2018 2:10:51 PM  
**Last Modified:** Thursday, April 05, 2018 2:12:50 PM  
**Time Spent:** 00:01:59  
**IP Address:** 161.69.123.10

---

Page 1

**Q1** Please provide the following information (all fields must be filled)

Name	D. W.
Address	127 E Sarah
City/Town	Kirkwood
State/Province	MO
ZIP/Postal Code	63122

---

**Q2** Which of the following best describes you? **Resident****Q3** In general, I: **Would like to see the following improvements to the project (please see my comments below)****Q4** Please share your thoughts about the project.

Please add bike lanes to the project. This would help both cyclists and drivers travel along the road

**Q5** Are there any other issues MoDOT should consider?

Improving bike infrastructure

**Q6** Please add me to your e-mail update list on this project (must provide e-mail below). **Respondent skipped this question****Q7** The following contact information is optional **Respondent skipped this question**

#42

J6S1718 Public Comments  
Comments Received On-Line**COMPLETE**

**Collector:** Web Link 1 (Web Link)  
**Started:** Thursday, April 05, 2018 3:00:22 PM  
**Last Modified:** Thursday, April 05, 2018 3:06:41 PM  
**Time Spent:** 00:06:18  
**IP Address:** 68.188.96.137

---

Page 1

**Q1** Please provide the following information (all fields must be filled)

Name	Dirk Sprogoe
Address	10211 Manchester RD
City/Town	Kirkwood
State/Province	MO
ZIP/Postal Code	63122

---

**Q2** Which of the following best describes you?  
**Business Owner****Q3** In general, I:  
**Would like to see the following improvements to the project (please see my comments below)****Q4** Please share your thoughts about the project.

I have a minumum of 30 cars using my parking lot to make a U-turn due to an outdated and problematic intersection and street design.

**Q5** Are there any other issues MoDOT should consider?

MODOT should consider motorists, cyclists, pedestrians, and businesses with this project.

**Q6** Please add me to your e-mail update list on this project (must provide e-mail below).  
**Yes****Q7** The following contact information is optional

Email Address	dirk@billygoatbicycleco.com
Phone Number	314.821.0216

---

#43

J6S1718 Public Comments  
Comments Received On-Line**COMPLETE**

**Collector:** Web Link 1 (Web Link)  
**Started:** Friday, April 06, 2018 9:43:06 AM  
**Last Modified:** Friday, April 06, 2018 9:44:02 AM  
**Time Spent:** 00:00:56  
**IP Address:** 65.197.19.243

---

Page 1

**Q1** Please provide the following information (all fields must be filled)

Name	Charles Vollmer III
Address	3142 Lackland Ave
Address 2	3142 Lackland Ave, Apt 2N
City/Town	St Louis
State/Province	Missouri
ZIP/Postal Code	63116

---

**Q2** Which of the following best describes you? Employee in the area**Q3** In general, I: Would like to see the following improvements to the project (please see my comments below)**Q4** Please share your thoughts about the project.

Bike lanes. We need em.

**Q5** Are there any other issues MoDOT should consider?

Adding bike lanes.

**Q6** Please add me to your e-mail update list on this project (must provide e-mail below). No**Q7** The following contact information is optional Respondent skipped this question

#44

J6S1718 Public Comments  
Comments Received On-Line**COMPLETE**

**Collector:** Web Link 1 (Web Link)  
**Started:** Friday, April 06, 2018 10:38:32 AM  
**Last Modified:** Friday, April 06, 2018 10:49:06 AM  
**Time Spent:** 00:10:34  
**IP Address:** 108.250.165.221

Page 1

**Q1** Please provide the following information (all fields must be filled)

Name	Joseph Scott
Address	2009 Alameda Ave
City/Town	Maplewood
State/Province	MO
ZIP/Postal Code	63143

**Q2** Which of the following best describes you? Resident**Q3** In general, I: Would like to see the following improvements to the project (please see my comments below)**Q4** Please share your thoughts about the project.

The metrolink makes Manchester from Big Bend to Hanley unique. This stretch of road should be given special consideration as to how to maximize its connection to the rest of Maplewood. There is limited increase in traffic only for a short period in the morning and again from 4-6pm. It is not as busy as other parts of Manchester and encouraging biking to and from the metrolink is not unreasonable. While a dedicated bike lane may be difficult, there should be street markings indicating to share the road.

**Q5** Are there any other issues MoDOT should consider? Respondent skipped this question**Q6** Please add me to your e-mail update list on this project (must provide e-mail below). No**Q7** The following contact information is optional

Email Address	joseph.scott314@gmail.com
Phone Number	3148031420



#45

J6S1718 Public Comments  
Comments Received On-Line**COMPLETE**

**Collector:** Web Link 1 (Web Link)  
**Started:** Saturday, April 07, 2018 7:27:07 AM  
**Last Modified:** Saturday, April 07, 2018 7:30:14 AM  
**Time Spent:** 00:03:06  
**IP Address:** 99.183.212.139

---

Page 1

**Q1** Please provide the following information (all fields must be filled)

Name	<b>Chrysa Niewald</b>
Address	<b>13173 Royal Pines</b>
City/Town	<b>St. Louis</b>
State/Province	<b>MO</b>
ZIP/Postal Code	<b>63146</b>

---

<b>Q2</b> Which of the following best describes you?	Other (please specify): Weekend resident
--	---

---

<b>Q3</b> In general, I:	<b>Would like to see the following improvements to the project (please see my comments below)</b>
--------------------------	---

---

**Q4** Please share your thoughts about the project.

Please include accommodations for bicycles in this oroject

<b>Q5</b> Are there any other issues MoDOT should consider?	<b>Respondent skipped this question</b>
---	---

---

<b>Q6</b> Please add me to your e-mail update list on this project (must provide e-mail below).	<b>Yes</b>
---	------------

---

**Q7** The following contact information is optional

Email Address	<b>cniewald@yahoo.com</b>
Phone Number	<b>314-650-4486</b>

---

#46

J6S1718 Public Comments  
Comments Received On-Line**COMPLETE**

**Collector:** Web Link 1 (Web Link)  
**Started:** Saturday, April 07, 2018 3:31:51 PM  
**Last Modified:** Saturday, April 07, 2018 3:46:06 PM  
**Time Spent:** 00:14:15  
**IP Address:** 108.193.24.39

Page 1

**Q1** Please provide the following information (all fields must be filled)

Name	Joyce Wilson
Address	3111 Cherry Ave
City/Town	Maplewood
State/Province	MO
ZIP/Postal Code	63143

**Q2** Which of the following best describes you? **Resident****Q3** In general, I: **Would like to see the following improvements to the project (please see my comments below)****Q4** Please share your thoughts about the project.

Bike lanes should be included as part of this project. This route is part of the adopted Gateway Bike Plan, which calls for a minimum of 5 foot bike lanes in this section. Not having any accommodation for people biking for transportation is counter to St. Louis County's Complete Streets Ordinance, The Gateway Bike Plan, and Adventure Cycling Association's Bicycle Route 66, which prioritizes this route as a direct connection into downtown St. Louis. I have biked from Des Peres to Maplewood on Manchester, and it was a frightening experience which I have not repeated, in part because I was passed so closely by a driver that their right-hand side mirror literally tapped the mirror mounted at the end of my left handlebar. Bicyclists need road space on Manchester, and we shouldn't have to wait for some nebulous future time for that to happen.

**Q5** Are there any other issues MoDOT should consider?

About sidewalk improvements, I want to stress that every intersection should have pedestrian signals across ALL sides of the intersection. As a pedestrian, I do not want to have to cross three sides of an intersection to get to where I'm going.

**Q6** Please add me to your e-mail update list on this project (must provide e-mail below). **No****Q7** The following contact information is optional. **Respondent skipped this question**

On-Line Comments

Page 49 of 51

49 / 51

#47

J6S1718 Public Comments  
Comments Received On-Line**COMPLETE**

**Collector:** Web Link 1 (Web Link)  
**Started:** Saturday, April 07, 2018 4:53:54 PM  
**Last Modified:** Saturday, April 07, 2018 4:55:41 PM  
**Time Spent:** 00:01:47  
**IP Address:** 108.193.24.39

---

Page 1

**Q1** Please provide the following information (all fields must be filled)

Name	<b>Kenneth Johnson</b>
Address	<b>3111 Cherry Ave</b>
City/Town	<b>Maplewood</b>
State/Province	<b>MO</b>
ZIP/Postal Code	<b>63143</b>

---

**Q2** Which of the following best describes you? **Resident****Q3** In general, I: **Would like to see the following improvements to the project (please see my comments below)****Q4** Please share your thoughts about the project.

Bike lanes should be a part of this project. This route is part of the adopted Gateway Bike Plan, which calls for a minimum of 5 foot bike lanes in this section. A lack of accommodation for transportation cyclists is counter to St. Louis County's Complete Streets Ordinance and the Gateway Bike Plan. Improvements for pedestrians: Every signaled intersection should have pedestrian signals across ALL sides of the intersection. Those 3-way pedestrian crossings send the message that pedestrians are a lower form of life that need barely be accommodated. Don't think that drivers don't notice.

---

**Q5** Are there any other issues MoDOT should consider? **Respondent skipped this question****Q6** Please add me to your e-mail update list on this project (must provide e-mail below). **Yes****Q7** The following contact information is optional

Email Address	<b>contact-point@pobox.com</b>
---------------	--------------------------------

---

#48

J6S1718 Public Comments  
Comments Received On-Line**COMPLETE**

**Collector:** Web Link 1 (Web Link)  
**Started:** Saturday, April 07, 2018 5:30:12 PM  
**Last Modified:** Saturday, April 07, 2018 5:39:30 PM  
**Time Spent:** 00:09:18  
**IP Address:** 174.77.81.34

---

Page 1

**Q1** Please provide the following information (all fields must be filled)

Name	Charles F Tuschling
Address	590 Sarah Lane
Address 2	105
City/Town	Creve Coeur
State/Province	Missouri
ZIP/Postal Code	63141-6966

---

**Q2** Which of the following best describes you? **Resident****Q3** In general, I: **Would like to see the following improvements to the project (please see my comments below)****Q4** Please share your thoughts about the project.

Please consider bicycle infrastructure for this project (e.g., protected bike lanes) or some acknowledgement that bikes need to safely ride on Manchester

---

**Q5** Are there any other issues MoDOT should consider?

In general, always consider bicycle safety when resurfacing or "improving " roads

---

**Q6** Please add me to your e-mail update list on this project (must provide e-mail below). **Yes****Q7** The following contact information is optional

Email Address	c.tuschling55@gmail.com
Phone Number	3149891195

---

On-Line Comments  
Page 51 of 51

51 / 51