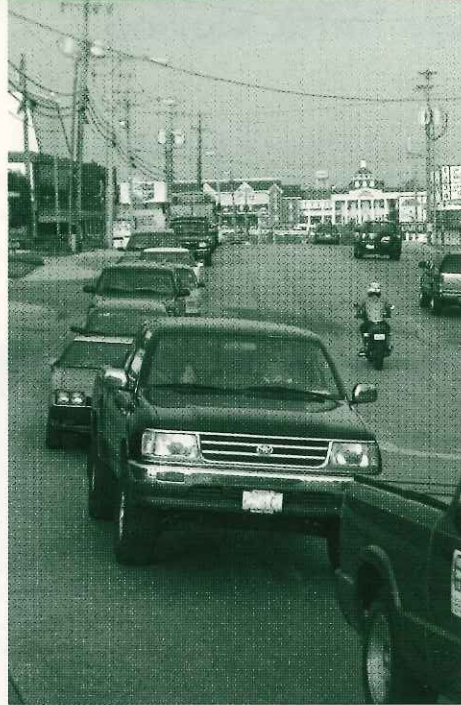


How MoDOT Manages Access

- >> Purchasing access rights along with the needed right of way for future projects.
- >> Retrofitting existing roadways.
- >> Relocating highways.
- >> Working with local governments to review development plans and establish local land use/access-management plans for highways, which creates new types of access to state roadways using the local road network.
- >> Reviewing plans for subdivisions that border state roadways and issuing permits to ensure new driveways comply with spacing, visibility and other criteria.



For more information about access management, contact the Missouri Department of Transportation at

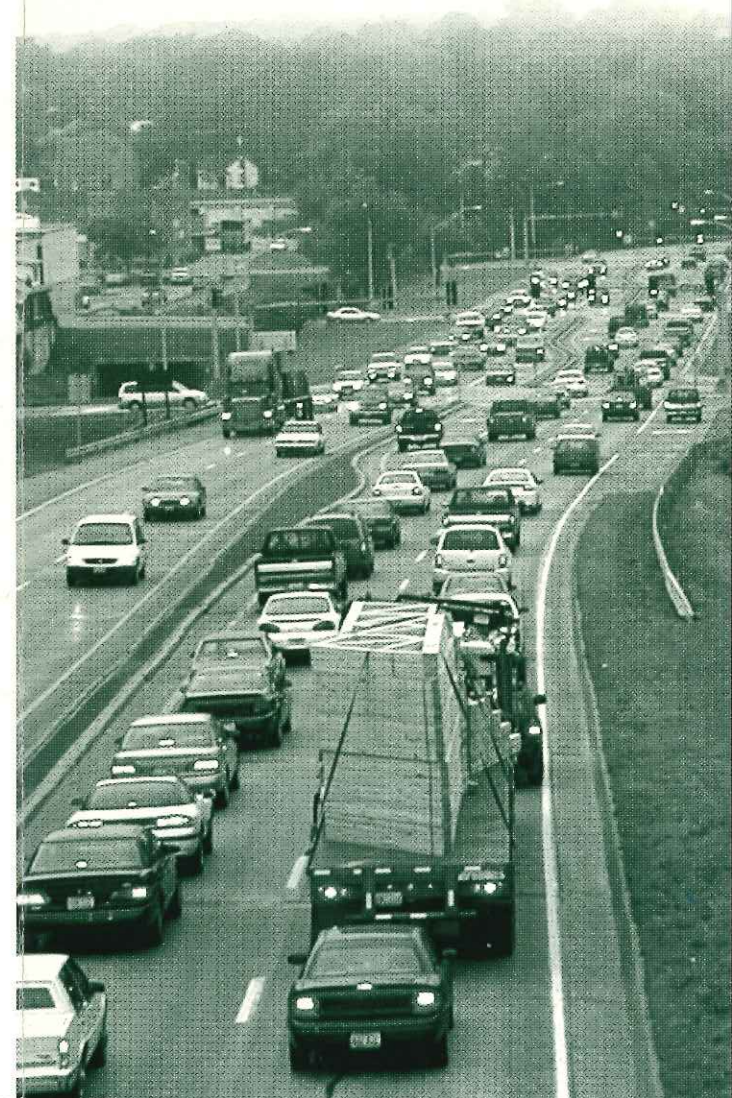
1-888-ASK-MODOT (275-6636).

www.modot.state.mo.us



Produced by Public Affairs 8/01

Moving Right Along



TR01.042

Managing Access To Missouri Highways

Keeping motorists moving safely and efficiently along Missouri highways is MoDOT's job. One tool MoDOT uses to get that job done is access management – a process that organizes driveways and intersections on a roadway.

A road may have several access points, including entries to businesses, farms and residences. Each one creates several potential conflict points where accidents can occur.

Too many improperly located streets and driveways can overwhelm drivers, and combined with too many vehicles entering and exiting a road at too many points, can lead to crashes and injuries. In fact, according to national studies, more than two-thirds of roadway crashes result from access-related problems.



Access Management Keeps Traffic Moving

Sometimes when roads become too congested, the solution is to add more lanes – and that doesn't always solve the problem. The only other options are to relo-

cate the road, or use access management, which is more cost-effective and also offers these important benefits.



Access Management Advantages

>> Improved Safety

Properly located driveways and streets reduce the number of potential conflicts that can lead to congestion, traffic and accidents.

>> Decreased Travel Time and Congestion

Limiting the number of driveways reduces the number of conflict points between through traffic and entering traffic, leading to less driver confusion and smoother, more efficient traffic flow.

>> Increased Roadway Capacity

More vehicles can use a roadway when travel time and congestion are decreased. Research shows a four-lane roadway with well-managed access can carry nearly 10,000 more vehicles a day.

>> Increased Property Access

Fewer driveways means less driver confusion about where to turn, making access to businesses easier.

>> Increased Economic Growth

More drivers will use a roadway and the businesses along it when the road offers increased traffic flow, fewer traffic delays, less congestion and improved safety. Drivers tend to avoid routes with access problems, which can hurt businesses.

>> Improved Air Quality

Reduced congestion and improved fuel economy lead to fewer air pollutants and less environmental harm.

For more information about access management, call **1-888-ASK-MODOT (275-6636)**.