

SOLAR PANEL
(IF APPLICABLE)

IF A BATTERY BOX AND/OR CONTROL BOX IS NECESSARY
IT SHALL BE MOUNTED ON THE BACK OF THE POST
BEHIND THE TOP OF THE SIGN AND SHALL NOT WEIGH
MORE THAN 20 POUNDS

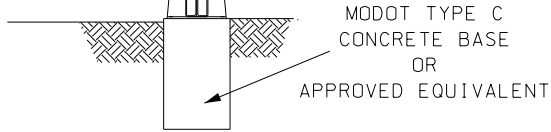


R2-1 SPEED LIMIT SIGN
30"X36" - TWO LANE ROUTES
36"X48" - FREEWAYS/EXPRESSWAYS

W13-20aP VEHICLE SPEED FEEDBACK PLAQUE
THE PLAQUE WIDTH SHALL BE
APPROXIMATELY THE WIDTH OF THE
SPEED LIMIT SIGN IT IS PLACED UNDER

MoDOT APPROVED
4 1/2" O.D.
POST

OWNERSHIP TAG MoDOT APPROVED
PEDESTAL BASE



APPROVED PRODUCTS LIST INFORMATION

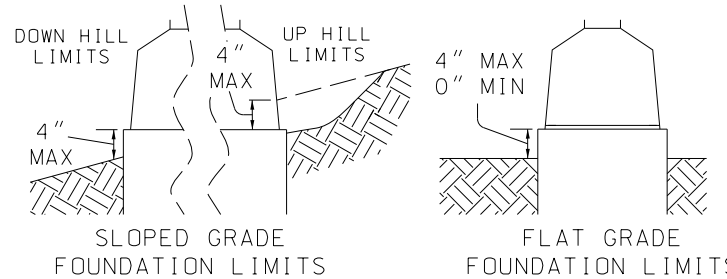
MODOT PEDESTAL BASES

- AKRON FOUNDRY.....MODEL TS-1000-L-P
- AKRON FOUNDRY.....MODEL TS-1000-L-WP
- PELCO.....PB5336
- PELCO.....PB5337
- TRAFFIC PARTS.....TP289 X

MODOT FUSED SLIP CONNECTORS

- BUSSMANN.....HEB-JW-RYC

IN NO CASE SHALL THE CONCRETE
BASE BE MORE THAN 4" ABOVE GRADE



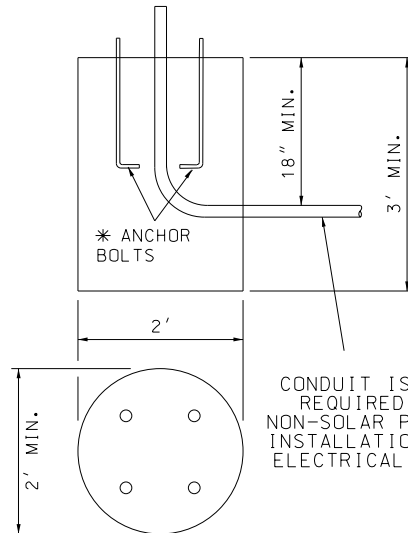
VEHICLE SPEED FEEDBACK ASSEMBLY

NOTES:

ONLY THE SPEED LIMIT SIGN AND THE VEHICLE SPEED FEEDBACK
PLAQUE MAY BE MOUNTED ONTO THE PEDESTAL POST AS SHOWN ON THIS
DOCUMENT. IF THE SYSTEM IS SOLAR POWERED, SOLAR PANELS AND/OR
BATTERY/CONTROL BOXES MAY BE MOUNTED ON THE PEDESTAL POST AS
SHOWN ON THIS DOCUMENT.

OTHER HARDWARE COMPONENTS SHALL BE REMOTE LOCATED AT
THE RIGHT OF WAY LINE

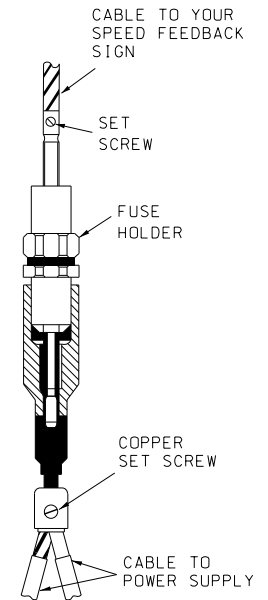
THE OWNERSHIP TAG SHALL BE FABRICATED TO LAST THE LIFE OF THE
INSTALLATION AND SHALL CONTAIN THE NAME AND CONTACT INFORMATION
OF THE ENTITY RESPONSIBLE FOR MAINTAINING THE INSTALLATION



CONDUIT IS ONLY
REQUIRED FOR
NON-SOLAR POWERED
INSTALLATIONS FOR
ELECTRICAL POWER

* ANCHOR BOLT DIMENSIONS ARE SHOWN ON THE
MANUFACTURER'S APPROVED DRAWINGS

TYPE C
CONCRETE BASE



FUSE CONNECTORS ARE
REQUIRED FOR
NON-SOLAR POWERED
INSTALLATIONS FOR
ELECTRICAL POWER
WITH FUSE CONNECTORS
LOCATED IN PEDESTAL BASE

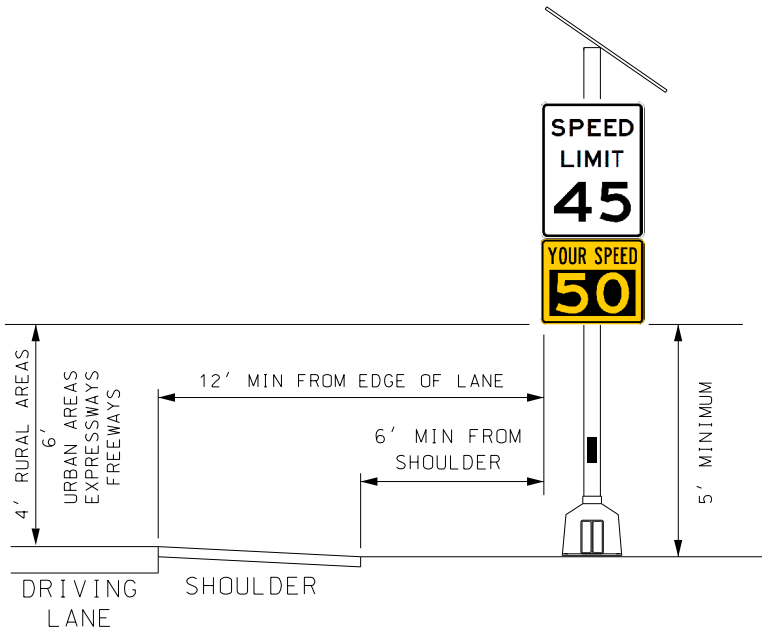
FUSED SLIP
CONNECTOR ASSEMBLY
FOR POWER



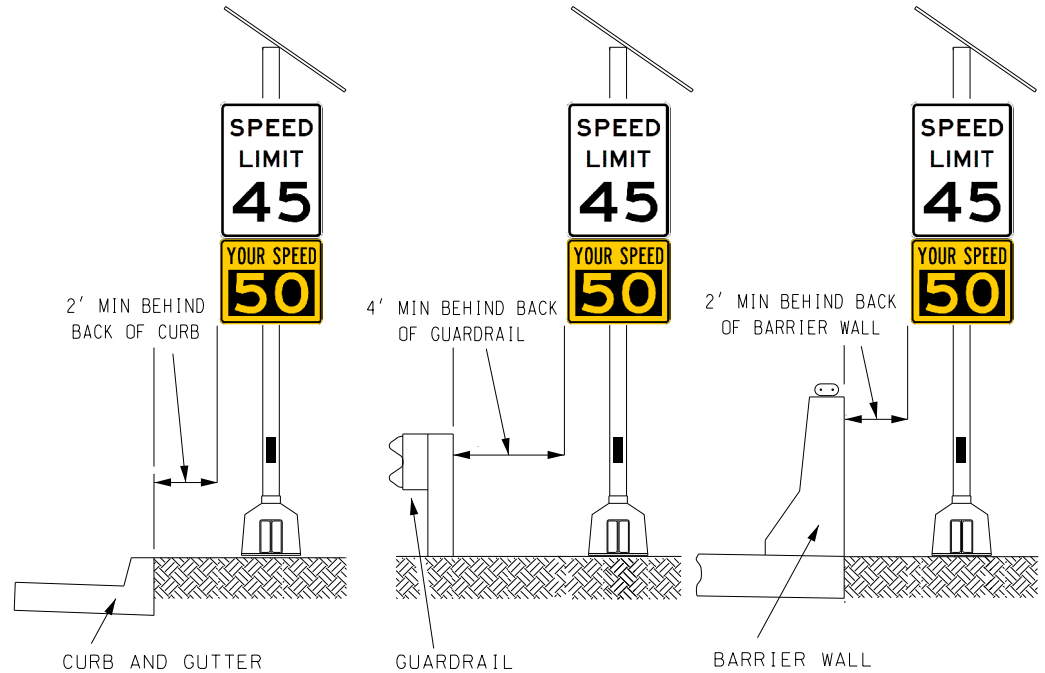
REVISION DATE: 4/1/2024

VEHICLE SPEED
FEEDBACK ASSEMBLY
TYPICAL APPLICATION

STANDARD OFFSET REQUIREMENTS



OFFSET REQUIREMENTS IF ASSEMBLY IS PLACED BEHIND A BARRIER
STANDARD MOUNTING HEIGHT REQUIREMENTS APPLY



MOUNTING HEIGHTS AND OFFSET REQUIREMENTS

NOTES:

- 1) NO PORTION OF BREAKAWAY DEVICE FIXED TO THE GROUND SHALL BE MORE THAN 4" ABOVE FINISHED GRADE. SEE PAGE 1 OF 2
- 2) INSTALLATIONS SHALL NOT BE PLACED ON SLOPES WITH GRADES STEEPER THAN 3:1
- 3) INSTALLATIONS SHALL NOT BE PLACED IN THE FLOW LINE OF DRAINAGE DITCHES
- 4) INSTALLATIONS SHALL NOT BE PLACED WITHIN 200 FEET OF ANY OTHER ROADWAY STRUCTURE
- 5) IF INSTALLED BEHIND A BARRIER, THE INSTALLATION SHALL BE A MINIMUM OF 50 FEET FROM THE BARRIER END
- 6) THE VEHICLE SPEED FEEDBACK PLAQUE SHALL MATCH THE DESIGN AND OPERATIONAL REQUIREMENTS SPECIFIED IN THE MUTCD AND BY MODOT



REVISION DATE: 4/1/2024

VEHICLE SPEED
FEEDBACK ASSEMBLY
TYPICAL APPLICATION