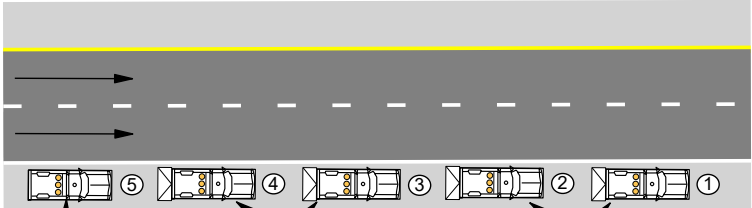


TRAFFIC PACING/ROLLING ROADBLOCK MAINLINE PACING DETAILS (1 DIRECTION OF FOUR LANE ROADWAY EXAMPLE)

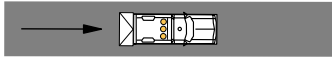
Protective Vehicle/Truck Mounted Attenuators and Advance Warning Vehicles are shown for this scenario for Traffic Pacing/Rolling Roadblock Operation. Law enforcement may be used as alternative to Protective Vehicle/Truck Mounted Attenuators and Advance Warning Vehicles.

STAGE ONE

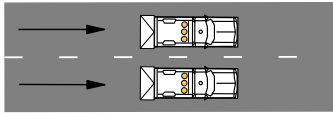


Vehicle Located on Shoulder At Beginning of Pacing Operation
Pace Setting Vehicles
Clearing Vehicles

Five vehicles located upstream of the work area at the beginning location of the traffic pacing operation.



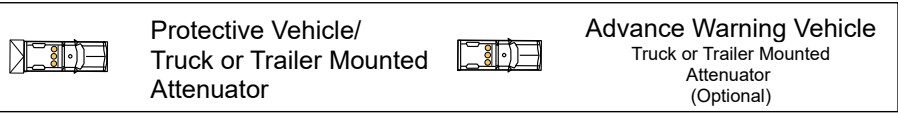
ONE LANE RAMP



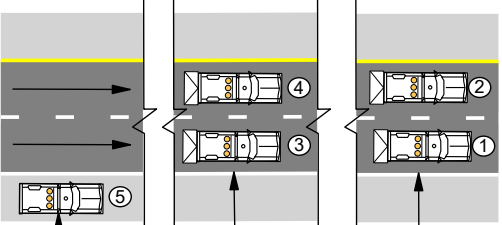
TWO LANE RAMP

Once notified by the on site work zone specialist to begin the traffic pacing operation, position the vehicle in the ramp lane(s) to close ramp access.

Once the pacing operation passes the closed on ramp the vehicle on the ramp shall move from the ramp lane(s) to allow traffic to enter the mainline pacing operation.



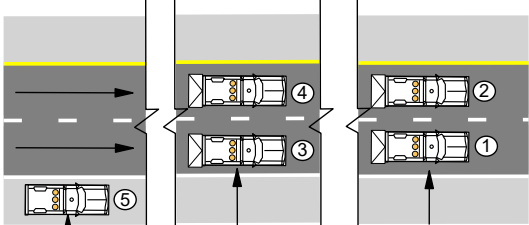
STAGE TWO



Vehicle Located on Shoulder At Beginning of Pacing Operation
Pace Setting Vehicles
Clearing Vehicles At The End Of Regular Traffic

Once the vehicles are in place and the work zone specialist at the work area notifies all vehicles to begin the traffic pacing operation. The first four vehicles shall enter the travel lanes with the third and fourth vehicles immediately forming a side by side "pacing operation/rolling roadblock" of all lanes behind the clearing vehicles.

STAGE THREE

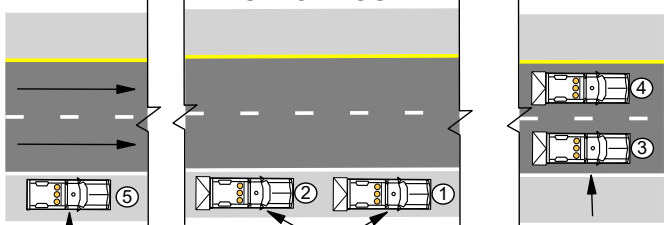


Vehicle Located On Shoulder At Beginning Of Pacing Operation
Pace Setting Vehicles
Clearing Vehicles Shall be Located Approximately 150-feet Before Work Area

The two pace setting vehicles shall begin to slow to the pacing speed for the duration of the traffic pacing operation.

The clearing vehicles shall match the speed of the last vehicles ahead of the pacing vehicles. The clearing vehicles will continue following traffic and come to a complete stop approximately 150-feet in advance of the work area, and become the protective vehicles.

STAGE FOUR



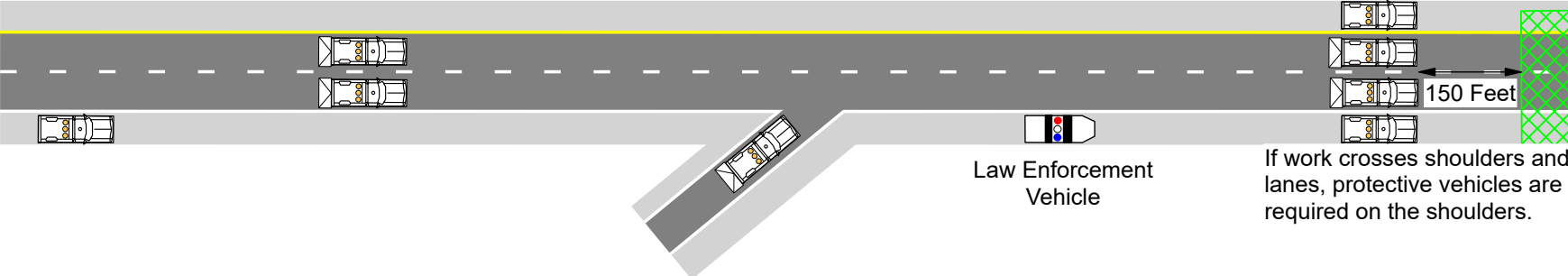
Vehicle Located on Shoulder at Beginning of Pacing Operation
Clearing Vehicles Located On Shoulder
Pacing Vehicles

When the pace setting vehicles are within approximately two miles of the work area they shall notify the onsite work zone specialist who will immediately inform the contractor on site supervisor of the pacing vehicles location. The contractor shall begin to clear the travel lanes of all equipment and debris in order to reopen all travel lanes.

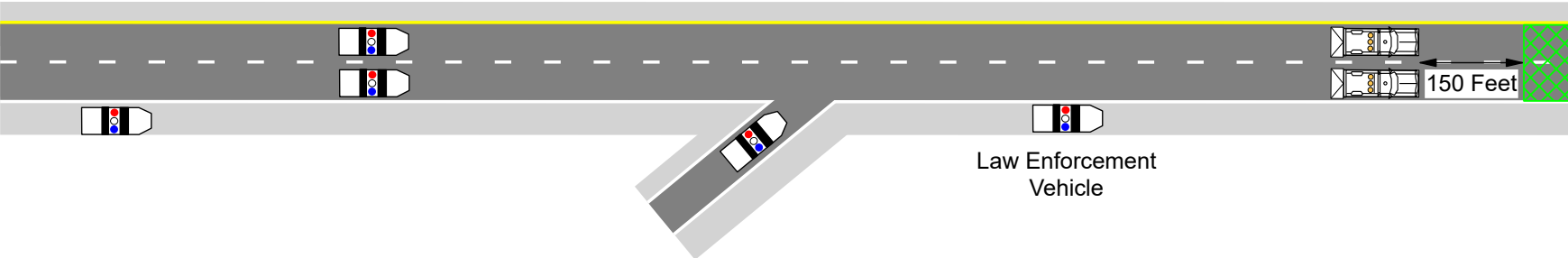
In case of emergency the pace setting vehicles shall come to a complete stop once they reach the clearing vehicles. If no emergency is encountered, the clearing vehicles shall be moved from the travel lanes and the two pace setting vehicles shall clear the work area and immediately move to the right shoulder or an area designated by the work zone specialist.

TRAFFIC PACING/ROLLING ROADBLOCK MAINLINE PACING DETAILS

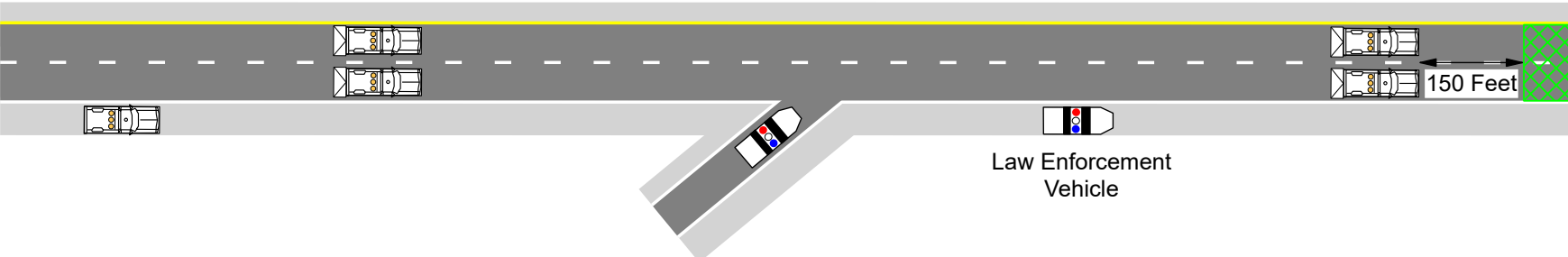
When the operation begins, law enforcement may be located closer to the work space to catch/stop any vehicles getting by the pace setting vehicle or on-ramps.




This scenario shows the use of law enforcement vehicles. Law enforcement may be located closer to the work space to catch/stop any vehicles getting by the pace setting vehicle or on-ramps.



This scenario shows a combination of vehicle types. If Protective Vehicle/Truck Mounted Attenuators (PV/TMA) are available, the PV/TMA should be used as the pace setting vehicles. Law enforcement may be located closer to the work space to catch/stop any vehicles getting by the pace setting vehicle or on-ramps.



	Protective Vehicle/ Truck or Trailer Mounted Attenuator		Advance Warning Vehicle Truck or Trailer Mounted Attenuator (Optional)		Law Enforcement		Work Space
---	---	---	---	---	-----------------	---	------------