

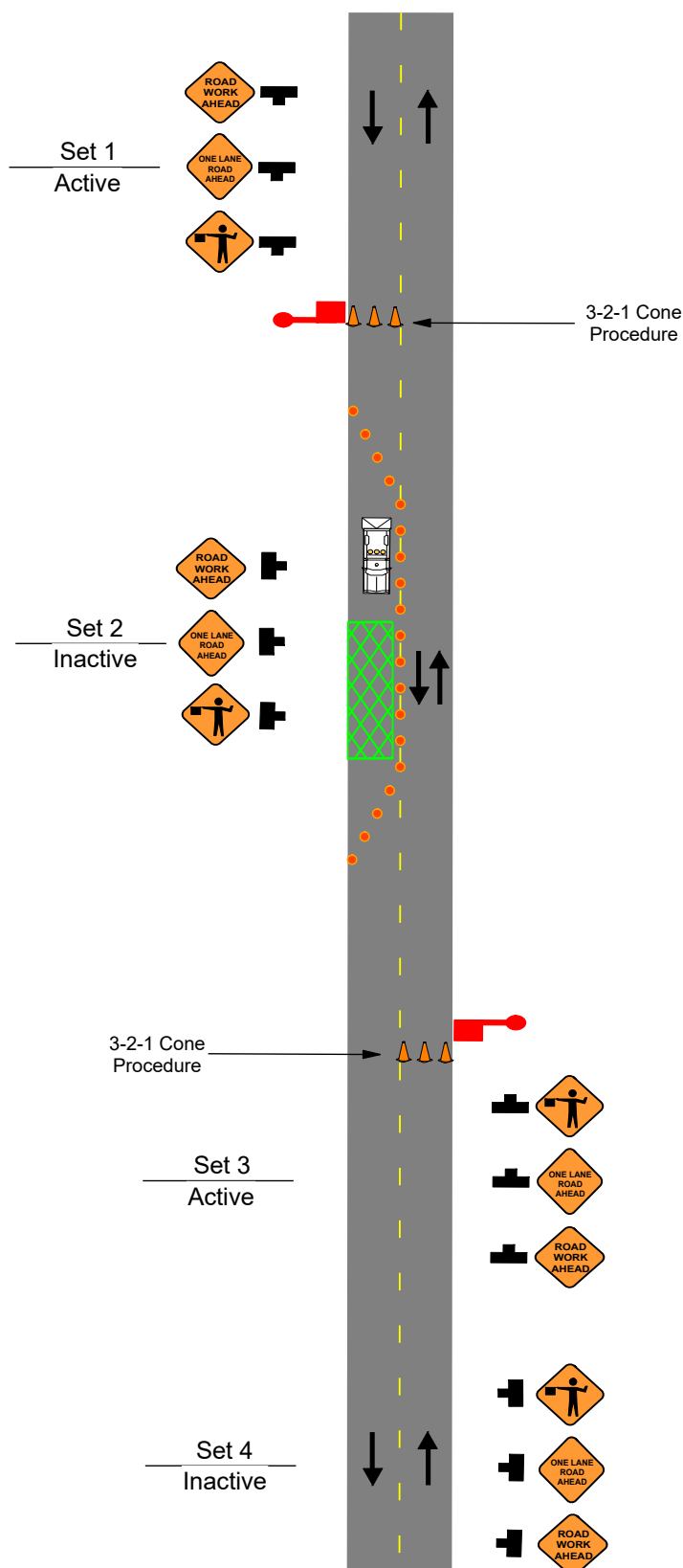
Supporting Figure: Flagger Control for Resurfacing or Moving Operations on a Two-Lane Highway

- **Always use advance warning signs:**
 1. Use EPG 616.17M (TA-17M) Mobile Operations on a Two-Lane Highway for placement/removal of advance warning signs.
 2. Do not exceed one mile between flagger and FLAGGER symbol sign.
 3. Channelizers may be reduced or eliminated.
 4. When sign sets 1 and 3 are active, sign sets 2 and 4 are inactive (turned away).
 5. When sign sets 2 and 4 are active, sign sets 1 and 3 become inactive (turned away).
 6. Continue steps 4 and 5 until operation is complete.
 7. Inactive signs are to be set with sign legend turned away from both directions of traffic.
- **Always use a protective vehicle. If available, use a truck/trailer mounted attenuator (TMA).**
 1. Activate high intensity rotating, flashing, oscillating, or strobe lights.
 2. Position the protective vehicle/TMA a minimum of 150 feet in advance of the work space, if possible.
 3. If used, operate the flashing arrow panel in the four-corner or alternating diamond caution mode.
- **Consider using a pilot vehicle for lengthy or difficult work zones to navigate.**
- **Flagger Station:**
 1. Flaggers will maintain a minimum of 100 feet from any equipment or workers.
 2. Use the 3-2-1 cone procedure.
 3. Identify an escape route for all flaggers.
 4. Illuminate flagger stations at night, except in emergencies.
- **Notes:**
 1. Flaggers and pilot vehicle operators are required to have current flagger certification training.
 - a. External flagger training will meet standard specifications located in section 616.4.3.
 - b. Internal flaggers will be trained in accordance with EPG 616.5.1.
 2. Supporting Figure: Side Roads Entering Work Zones.
 3. One or both lanes of traffic may be stopped at the same time for up to a maximum of 15 minutes.

For other operations, refer to:
<ul style="list-style-type: none">• Mobile:<ol style="list-style-type: none">1. EPG 616.8.17M (TA-17M) Mobile Operation on a Two-Lane Highway.• Short Duration (60 minutes or less):<ol style="list-style-type: none">1. EPG 616.8.10SD (TA-10SD) Short Duration Lane Closure on a Two-Lane Highway using Flaggers.2. EPG 616.8.10SDTMA (TA-10SDTMA) Short Duration Lane Closure on a Two-Lane Highway using TMA Flaggers.

Supporting Figure: Flagger Control for Resurfacing or Moving Operations on a Two-Lane Highway

DAYLIGHT FLAGGING OPERATIONS ONLY



WO20-7



WO20-4



WO20-1



Work Space



Flagger



Channelizer



Sign

Protective
VehicleTruck/Trailer Mounted
Attenuator (TMA)

Date:

Type of Work:

Location:

Work Zone Specialist:

Field Notes: