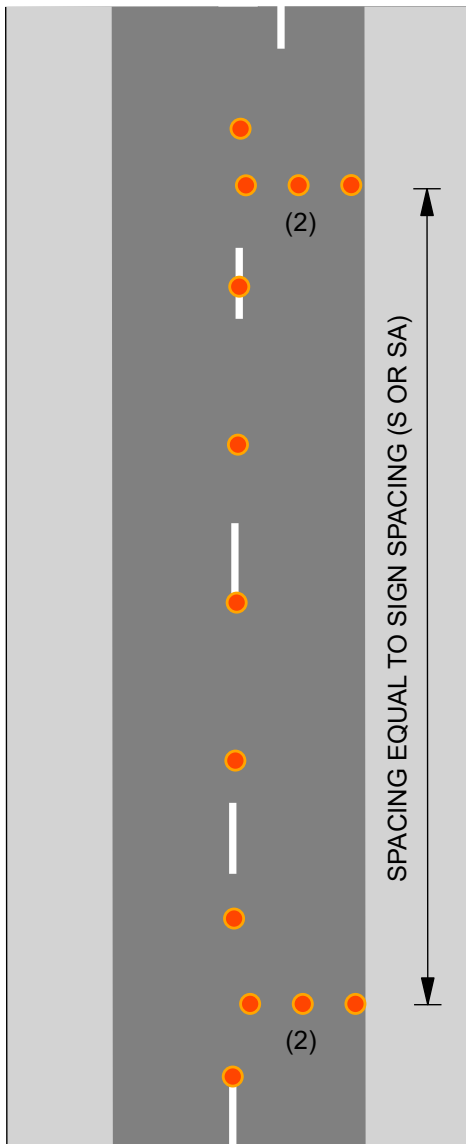
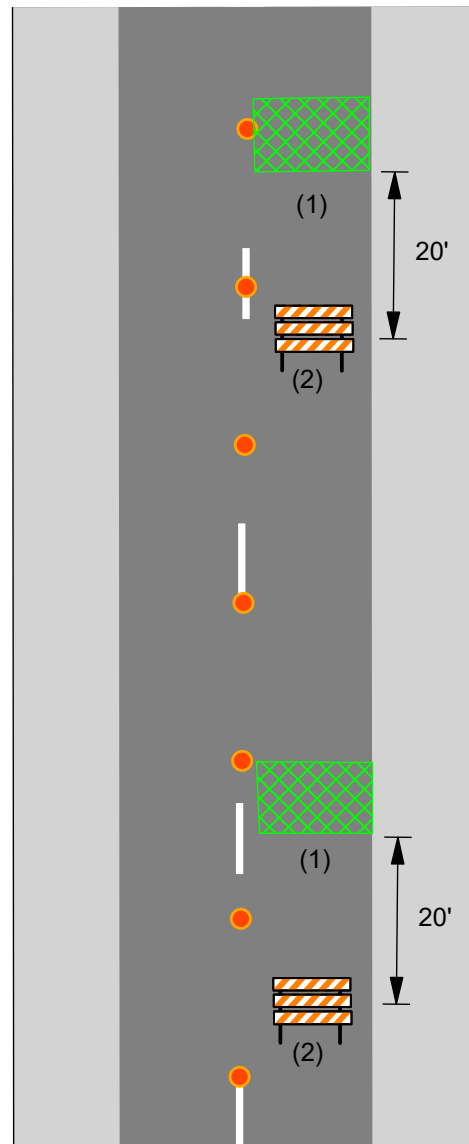


Support Figure: Intermittent Lane Closure



EXTENDED LENGTHS



HAZARDS IN CLOSED LANE

NOTES:

THE ACTIVE WORK AREA MAY BE SUPPLEMENTED WITH CHANNELIZERS AND/OR TYPE 3 BARRICADES PLACED PERPENDICULAR TO THE FLOW OF TRAFFIC TO DETER NON-CONSTRUCTION RELATED USE OF CLOSED LANES.

SPACING MAY BE ADJUSTED BASED ON DIFFERENT OPERATIONS.

(1) ACTIVE WORK AREAS IN LANE CLOSURE SUCH AS PAVEMENT REPAIR OR OTHER OPERATION.

(2) ONE TYPE 3 BARRICADE OR 3 CHANNELIZERS MAY BE USED PER LOCATION.