

Supporting Figure: Lane Closure on Alternating Passing Lanes

- **Always use advance warning signs, flashing arrow panels, and channelizers:**
 1. Use EPG 616.17M (TA-17M) Mobile Operation on a Two-Lane Highway for placement/removal of advance warning signs, flashing arrow panels, and channelizers.
 2. Use EPG 616.33SD (TA-33SD) Short Duration Lane Closure on a Multi-Lane Highway for setting advance warning signs, flashing arrow panels, and channelizers.
- **Always use a protective vehicle. If available, use a truck/trailer mounted attenuator (TMA).**
 1. Activate high intensity rotating, flashing, oscillating, or strobe lights.
 2. Position the protective vehicle/TMA a minimum of 150 feet in advance of the work space, if possible.
 3. Operate the flashing arrow panel (FAP) in the four-corner or alternating diamond caution mode.

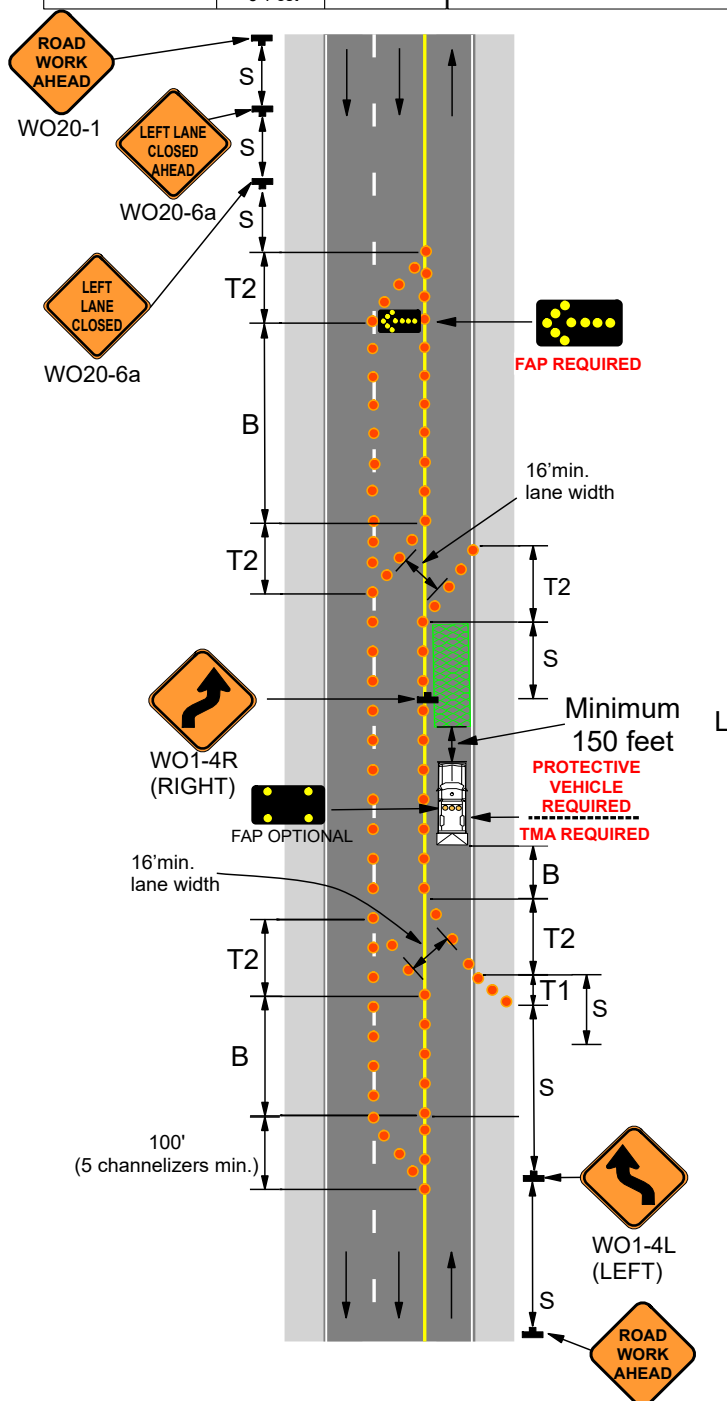
For other operations, refer to:
<ul style="list-style-type: none">• Mobiles:<ol style="list-style-type: none">1. EPG 616.17M (TA-17M) Mobile Operation on a Two-Lane Highway.2. EPG 616.35M (TA-35M) Mobile Operation on Multi-Lane Highway.• Long-term Stationary:<ol style="list-style-type: none">1. EPG 616.6.2.2 Flags and Advance Warning Rail System.2. EPG 616.6.78 Temporary Markings.• Nighttime Operations:<ol style="list-style-type: none">1. EPG 616.6.83 Warning Lights for use of sequential lights.• Speed Limit Guidance:<ol style="list-style-type: none">1. EPG 616.12 Work Zone Speed Limits for speed limit guidelines.

Supporting Figure: Lane Closure on Alternating Passing Lanes

SPEED	SIGN SPACING (ft.)	TAPER LENGTH (ft.)		RECOMMENDED	CHANNELIZER SPACING (ft.)	
Permanent Posted (mph)	Undivided (S)	Shoulder (1) (T1)	Lane (2) (T2)	BUFFER LENGTH (ft.) (B)	Tapers	Buffer/ Work Areas
0-35	200	70	245	250	35	40
40-45	350	150	540	360	40	80
50-55	500	185	660	495	50	80
60-70	1000	235	840	730	60	120

1. Shoulder taper length based on 10 ft. (standard shoulder width) offset. 2. Lane taper length based on 12 ft. (standard lane width) offset.

TYPE OF ROADWAY	SIGN HEIGHT	MAXIMUM WORK ZONE LENGTH (L)	Channelizer	Flashing Arrow Panel (FAP)	Protective Vehicle
URBAN	1' Portable 7' Post	1 Mi.	Sign	Work Space	Truck/Trailer Mounted Attenuator (TMA)
RURAL UNDIVIDED	1' Portable 5' Post	3 Mi.			



Date:

Type of Work:

Location:

Work Zone Specialist:

Field Notes: