


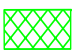


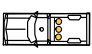
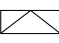


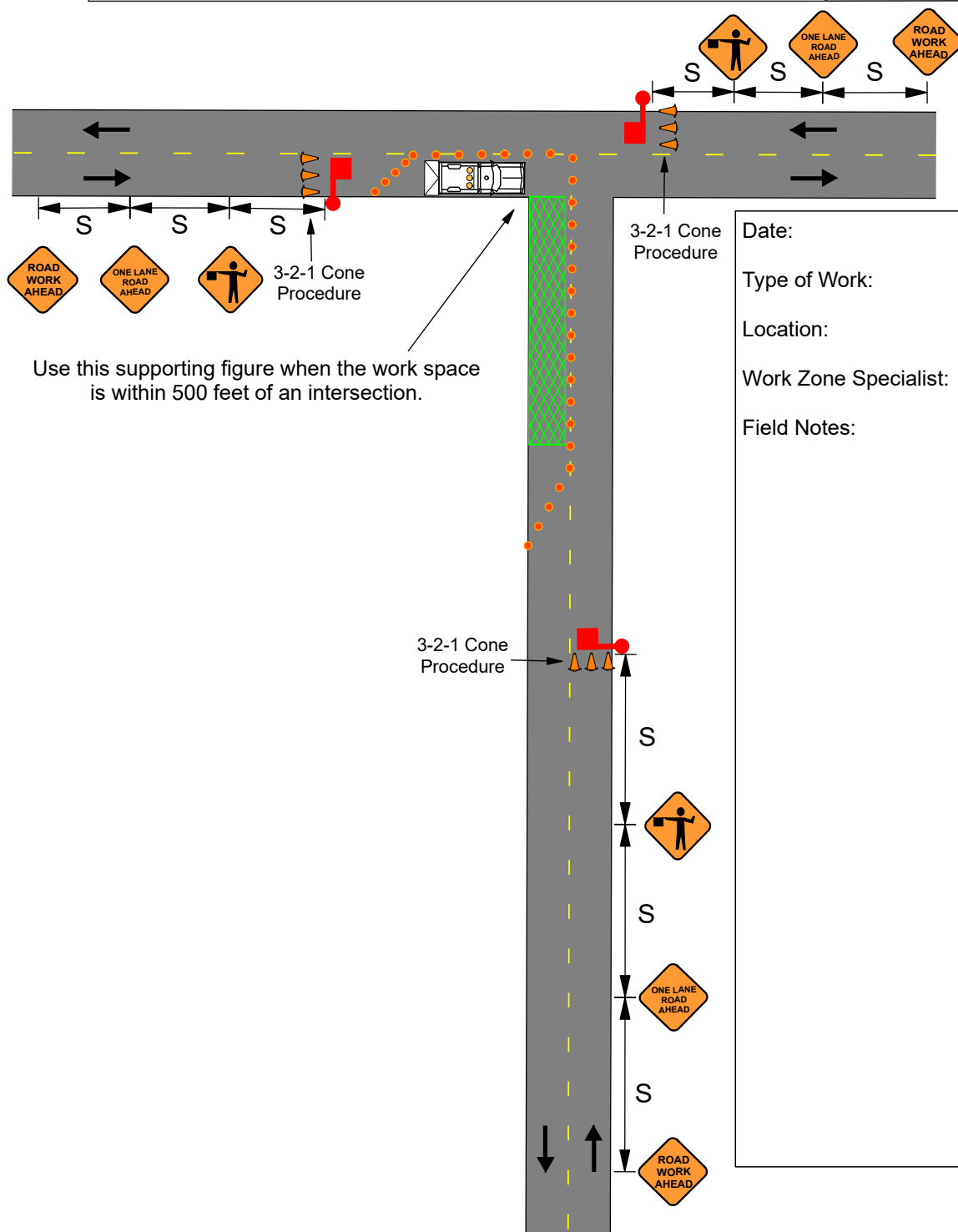
Supporting Figure: Lane Closure on a Two-Lane Highway Near Intersections

- **Use this typical application:**
 1. When the work space is within 500 feet of an intersection.
 2. When the work space is more than 500 feet and less than 3 times sign spacing from the nearest intersection.
- **Always use advance warning signs:**
 1. Use EPG 616.17M (TA-17M) Mobile Operations on a Two-Lane Highway for placement/removal of advance warning signs.
 2. Do not exceed one mile between flagger and FLAGGER symbol sign.
 3. Channelizers may be reduced or eliminated.
- **Always use a protective vehicle. If available, use a truck/trailer mounted attenuator (TMA).**
 1. Activate high intensity rotating, flashing, oscillating, or strobe lights.
 2. Position the protective vehicle/TMA a minimum of 150 feet in advance of the work space, if possible.
 3. If used, operate the flashing arrow panel in the four-corner or alternating diamond caution mode.
- **Consider using a pilot vehicle for lengthy or difficult work zones to navigate.**
- **Flagger Station:**
 1. Flaggers will maintain a minimum of 100 feet from any equipment or workers.
 2. Use the 3-2-1 cone procedure.
 3. Identify an escape route for all flaggers.
 4. Illuminate flagger stations at night, except in emergencies.
- **Notes:**
 1. Flaggers and pilot vehicle operators are required to have current flagger certification training.
 - a. External flagger training will meet standard specifications located in section 616.4.3.
 - b. Internal flaggers will be trained in accordance with EPG 616.5.1.
 2. Supporting Figure: Side Roads Entering Work Zones.
 3. One or both lanes of traffic may be stopped at the same time for up to a maximum of 15 minutes.

For other operations, refer to:
<ul style="list-style-type: none">• Mobile:<ol style="list-style-type: none">1. EPG 616.8.17M (TA-17M) Mobile Operation on a Two-Lane Highway.• Short Duration (60 minutes or less):<ol style="list-style-type: none">1. EPG 616.8.10SD (TA-10SD) Short Duration Lane Closure on a Two-Lane Highway using Flaggers.2. EPG 616.8.10SDTMA (TA-10SDTMA) Short Duration Lane Closure on a Two-Lane Highway using TMA Flaggers.

Supporting Figure: Lane Closure on a Two-Lane Highway Near Intersections

 WO20-7  WO20-4  WO20-1	 Work Space  Flagger  Channelizer	 Protective Vehicle  Truck/Trailer Mounted Attenuator (TMA)	SPEED	SIGN SPACING (ft.)
			Permanent Posted (mph)	Undivided (S)
			0-35	200
			40-45	350
			50-55	500
			60-70	1000



Date:

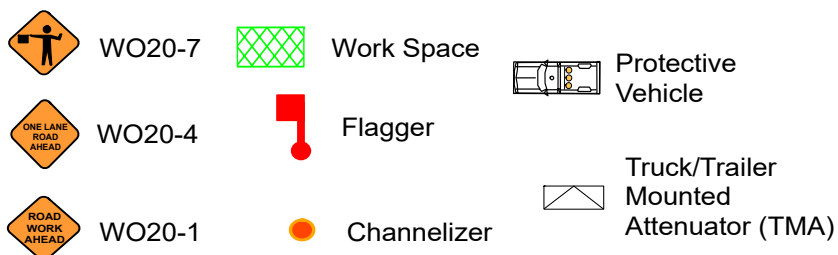
Type of Work:

Location:

Work Zone Specialist:

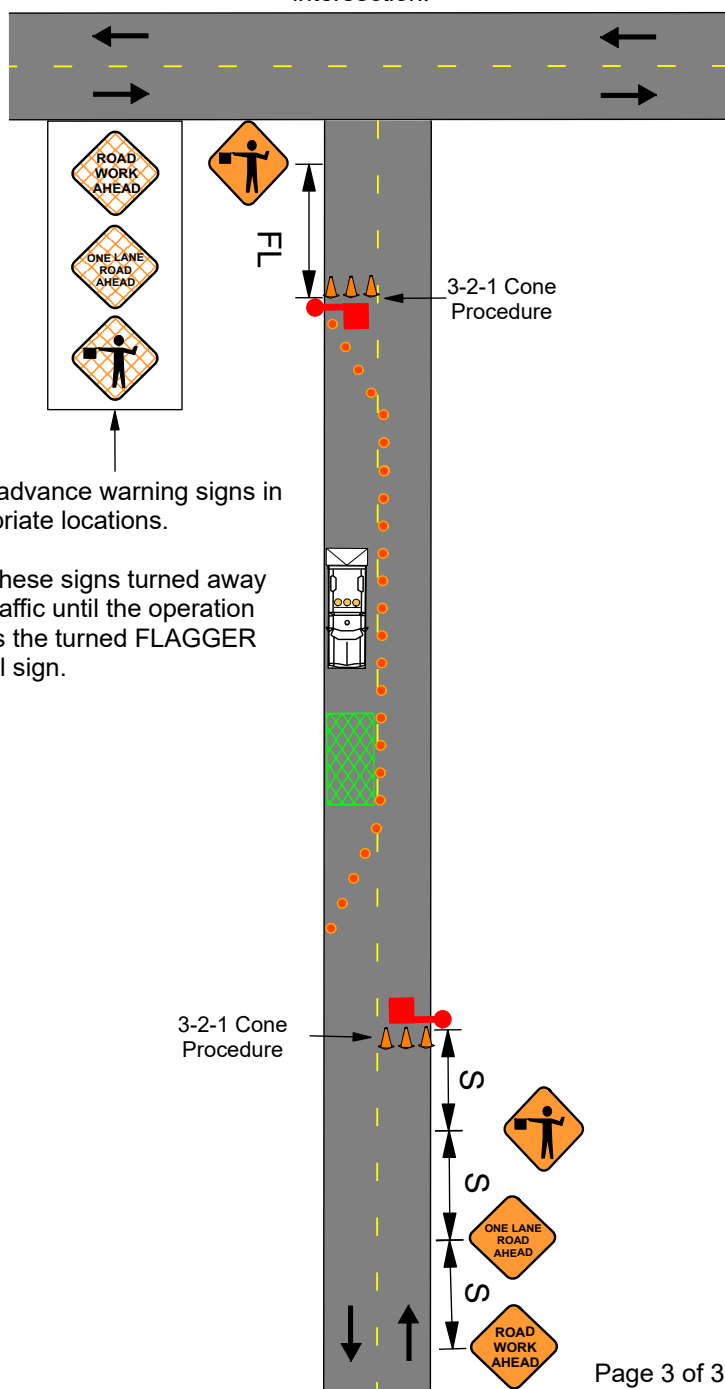
Field Notes:

Supporting Figure: Lane Closure on a Two-Lane Highway Near Intersections



SPEED	SIGN SPACING (ft.)	FLAGGER LOCATION (ft.) (FL)
Permanent Posted (mph)	Undivided (S)	
0-35	200	100
40-45	350	175
50-55	500	325
60-70	1000	550

Use this supporting figure when the work space is more than 500 feet and less than 3 times sign spacing from the nearest intersection.



Place advance warning signs in appropriate locations.

Keep these signs turned away from traffic until the operation passes the turned FLAGGER symbol sign.

Date:

Type of Work:

Location:

Work Zone Specialist:

Field Notes: