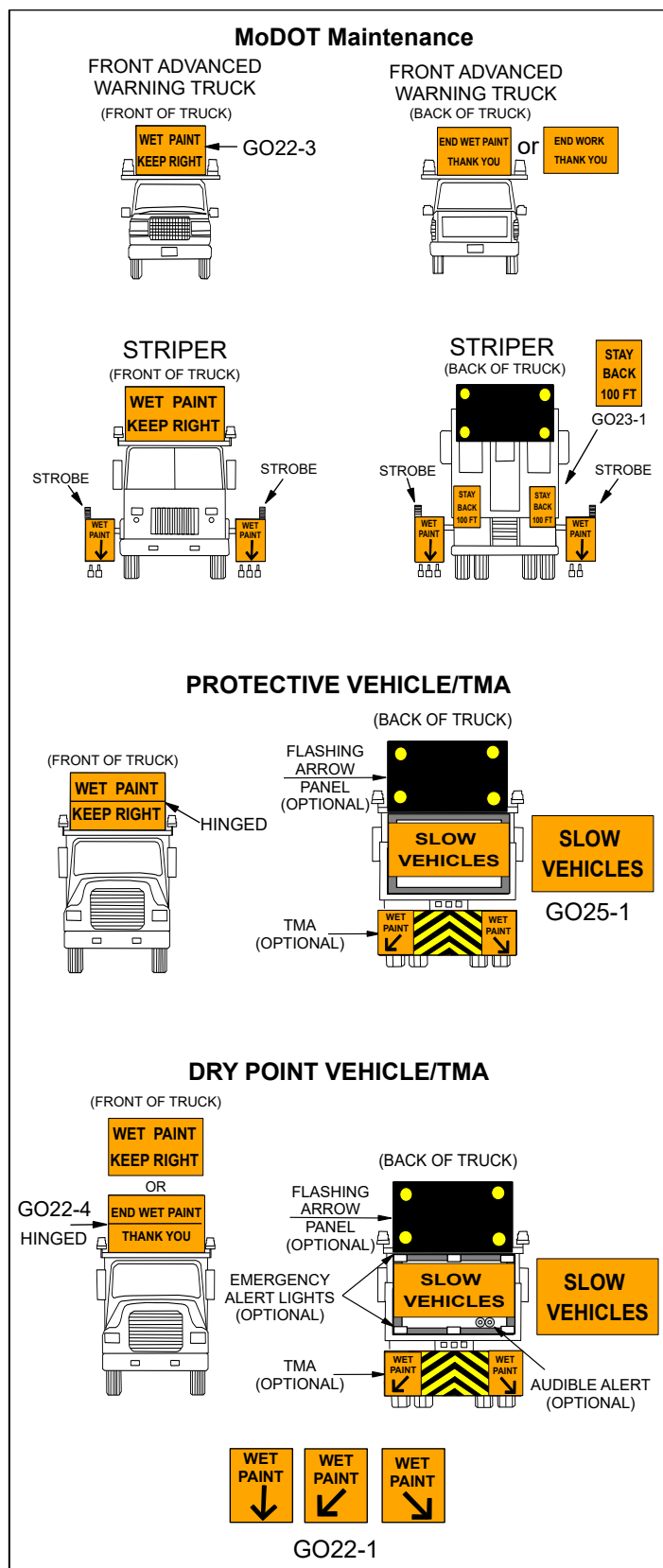


## 616.8.17STRIPE (TA-17STRIPE) Striping Operations on a Two-Lane Highway

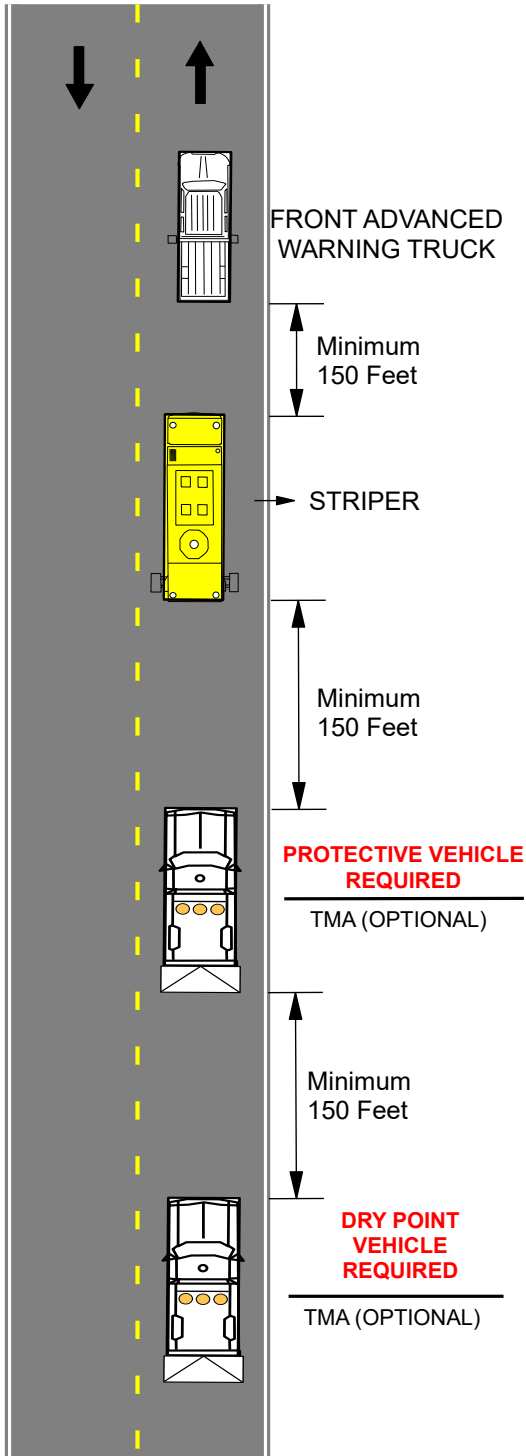
- **Always use vehicle mounted advance warning sign on the protective vehicle.**
- **Always use a protective vehicle. If available, use a truck/trailer mounted attenuator (TMA).**
  1. Activate high intensity rotating, flashing, oscillating, or strobe lights.
  2. Position the protective vehicle/TMA a minimum of 150 feet in advance of the work space, if possible.
  3. If the protective vehicle is equipped with a TMA, place a static sign under the flashing arrow panel.
  4. If used, operate the flashing arrow panel in the four-corner or alternating diamond caution mode.
  5. Set vehicle mounted sign at a recommended height of 48 inches above the road.
- **Use this typical application for the placement/removal of advance warning signs, and debris/animal removal on two-lane highways:**
  1. EPG 616.17M (TA-17M) Mobile Operation on a Two-Lane Highway.
  2. All other operations that require workers on foot, refer to the proper lane closure typical application.

For other operations, refer to:
<ul style="list-style-type: none"><li>• <b>Stationary:</b><ol style="list-style-type: none"><li>1. EPG 616.8.10S (TA-10S) Stationary Lane Closure on a Two-Lane Highway using Flaggers.</li><li>2. EPG 616.8.10STMA1 (TA-10STMA1) Stationary Lane Closure on a Two-Lane Highway using a TMA Flagger.</li><li>3. EPG 616.8.10STMA2 (TA-10STMA2) Stationary Lane Closure on a Two-Lane Highway using Multiple TMA Flaggers.</li></ol></li><li>• <b>Short Duration (60 Minutes or less):</b><ol style="list-style-type: none"><li>1. EPG 616.8.10SD (TA-10SD) Short Duration Lane Closure on a Two-Lane Highway Using Flaggers.</li><li>2. EPG 616.8.10SDTMA (TA-10SDTMA) Short Duration Lane Closure on a Two-Lane Highway using TMA Flaggers.</li></ol></li></ul>

## 616.8.17STRIPE (TA-17STRIPE) Striping Operations on a Two-Lane Highway



## 616.8.17STRIPE (TA-17STRIPE) Striping Operations on a Two-Lane Highway



Date:

Type of Work:

Location:

Work Zone Specialist:

Field Notes: