

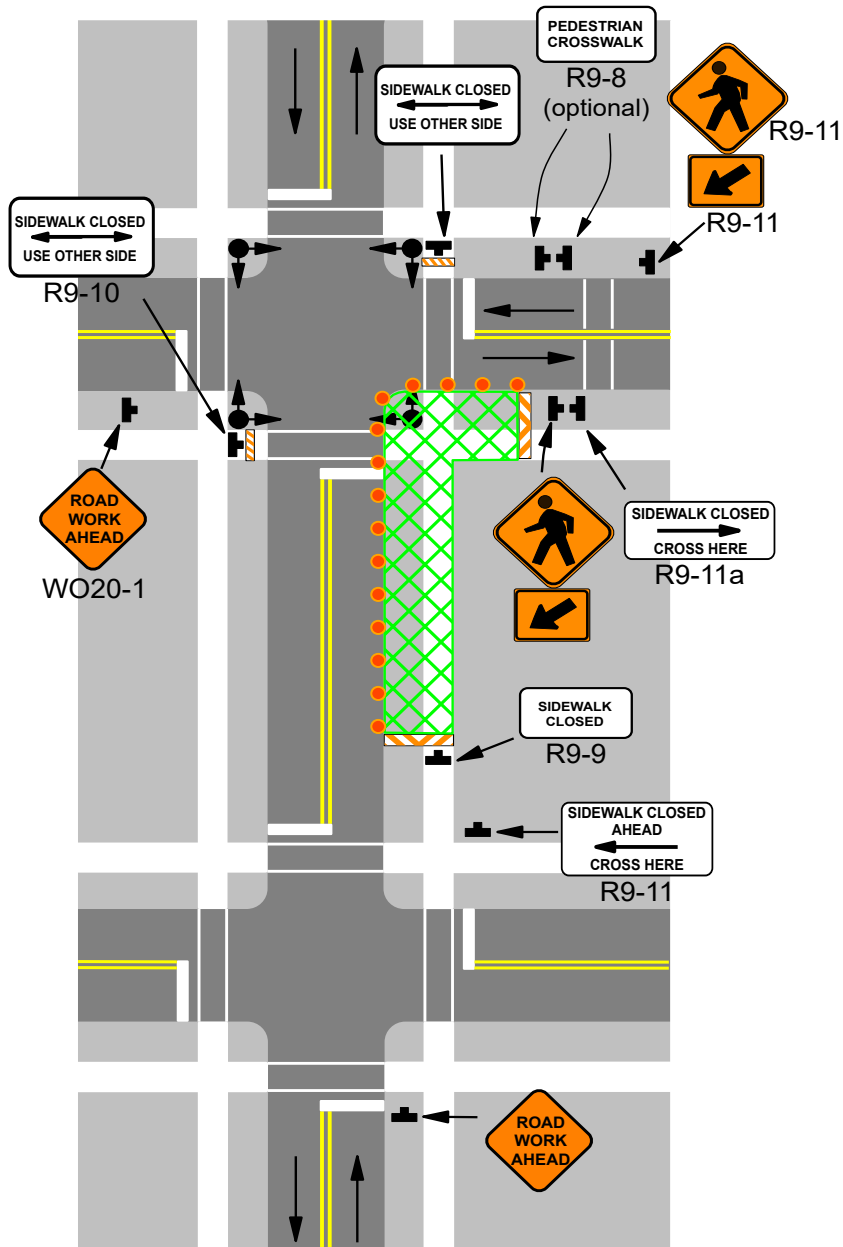
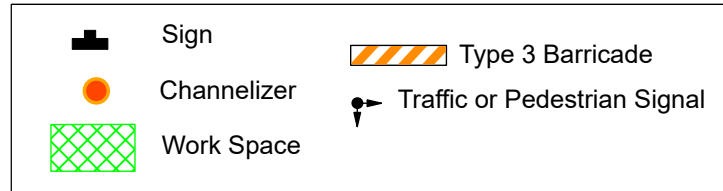
616.8.29S (TA-29S) Stationary Crosswalk Closures and Pedestrian Detour

- **Always use advance warning signs and channelizers:**
 1. Signs may be mounted on portable mounts at 1 ft. provided they do not interfere with pedestrian movement or be obstructed by parking. Otherwise, signs shall be mounted at 7 ft.
 2. Only the temporary traffic control (TTC) devices related to pedestrians are shown. Other devices, such as lane closure signing or ROAD NARROWS signs, may be used to control vehicular traffic.
- **Do not set-up a work zone if it conflicts with the signal lights or pedestrian traffic signal displays, contact the appropriate district personnel.**
- **Audible Information:**
 1. When crosswalks or other pedestrian facilities are closed or relocated, temporary facilities must provide detectable, and accessibility features consistent with the features present in the existing pedestrian facility.
 2. SIDEWALK CLOSED CROSS HERE signs must include audible information devices to provide adequate communication to pedestrians with vision disabilities.
 3. Audible information devices must be located at midblock sidewalk closings and relocated crosswalk areas to provide adequate communication to the pedestrians with vision disabilities.
- **Pedestrian Routes:**
 1. Curb parking must be prohibited for at least 50 feet in advance of the midblock crosswalk.
 2. Pedestrian traffic signal displays that control the closed crosswalks are recommended to be covered or deactivated.
 3. Before any work is started, discussion with the District Traffic Division on the use of pedestrian channelizing and temporary traffic barrier protection is needed to provide the appropriate protection and guidance for the pedestrians.
 4. Street lighting may be considered.
 5. In order to maintain the systematic use of the fluorescent yellow-green background for pedestrian, bicycle, and school warning signs in a jurisdiction, the fluorescent yellow-green background for pedestrian, bicycle, and school warning signs may be used in TTC zones.
 6. Positive protection devices may be used per 616.6.85 Temporary Traffic Barrier.

For other operations, refer to:

- **Stationary Operations:**
 1. EPG 616.8.21S (TA-21S) Stationary Center Lane Closure at an Intersection.
 2. EPG 616.8.22S (TA-22S) Stationary Right Lane Closure at an Intersection.
 3. EPG 616.8.23S (TA-23S) Stationary Left Lane Closure at an Intersection.
- **Short Duration (60 minutes or less):**
 1. EPG 616.8.21SD (TA-21SD) Short Duration Center Lane Closure at an Intersection.
 2. EPG 616.8.22SD (TA-22SD) Short Duration Right Lane Closure at an Intersection.
 3. EPG 616.8.23SD (TA-23SD) Short Duration Left Lane Closure at an Intersection.
- **Long-term Stationary Operations:**
 1. EPG 616.6.78 Temporary Markings.
- **Nighttime Operations:**
 1. EPG 616.6.83 Warning Lights for use of sequential lights.
- **Speed Limit Guidance:**
 1. EPG 616.12 Work Zone Speed Limits for speed limit guidelines.

616.8.29S (TA-29S) Stationary Crosswalk Closures and Pedestrian Detours



Date:

Type of Work:

Location:

Work Zone Specialist:

Field Notes: