

616.8.42S (TA-42S) Stationary Work in the Vicinity of Exit Ramp

- **Always use advance warning signs, flashing arrow panels, and channelizers.**
 1. Use EPG 616.33SD (TA-33SD) Short Duration Lane Closure on a Multi-Lane Highway for setting advance warning signs and channelizers.
 2. Place a temporary EXIT sign at a mounting height of seven feet in the temporary gore area to show the ramp is open.
 3. Place channelizers immediately before and after the temporary exit at $\frac{1}{2}$ the normal spacing.
- **Always use a protective vehicle with a flashing arrow panel (FAP) and a truck/trailer mounted attenuator (TMA).**
 1. Activate high intensity rotating, flashing, oscillating, or strobe lights.
 2. Position the protective vehicle/TMA a minimum of 150 feet in advance of the work space, if possible.
 3. Operate the FAP in the four-corner or alternating diamond caution mode.
- **For roadways posted at 45 mph or below, shoulder advance warning and protective vehicles are required, use a TMA if available:**
 1. Activate high intensity rotating, flashing, oscillating, or strobe lights.
 2. Position the protective vehicle at least 150 feet behind the work space, if possible.
 3. Equip the TMA with a FAP set in the four-corner or alternating diamond caution mode or a CMS with the appropriate lane closure message, and an appropriate lane closure sign.
 4. Equip the advance warning vehicle with a FAP set in the four-corner or alternating diamond caution mode or a CMS with the appropriate lane closure message, and an appropriate lane closure sign.

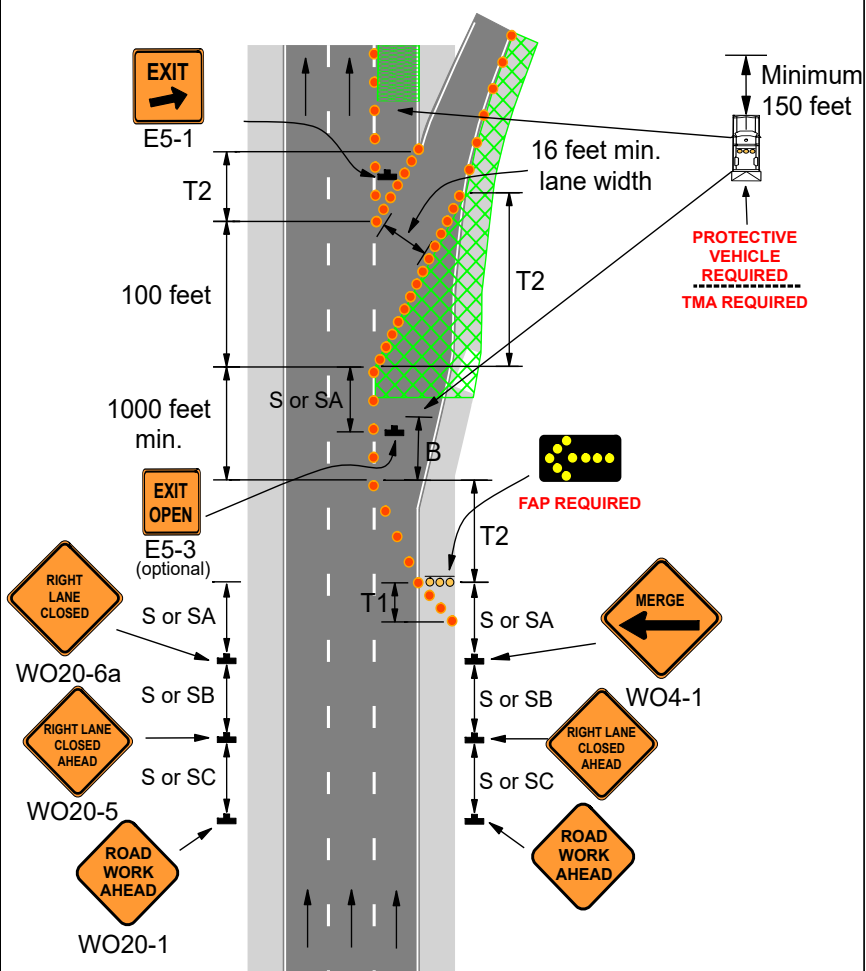
For other operations, refer to:
<ul style="list-style-type: none">• Mobile:<ol style="list-style-type: none">1. EPG 616.35M (TA-35M) Mobile Operation on Multi-Lane Highway.• Short Duration (60 minutes or less):<ol style="list-style-type: none">1. EPG 616.8.33SD (TA-33SD) Short Duration Lane Closure on a Multi-Lane Highway.• Long-term Stationary Operations:<ol style="list-style-type: none">1. EPG 616.6.2.2 Flags and Advance Warning Rail System.2. EPG 616.6.78 Temporary Markings.• Nighttime Operations:<ol style="list-style-type: none">1. EPG 616.6.83 Warning Lights for use of sequential lights.• Speed Limit Guidance:<ol style="list-style-type: none">1. EPG 616.12 Work Zone Speed Limits for speed limit guidelines.

616.8.42S (TA-42S) Stationary Work in the Vicinity of Exit Ramp

SPEED Permanent Posted (mph)	SIGN SPACING (ft.)		TAPER LENGTH (ft.)		RECOMMENDED BUFFER LENGTH (ft.) (B)	CHANNELIZER SPACING (ft.)	
	Undivided (S)	Divided (S)	Shoulder (1) (T1)	Lane (2) (T2)		Tapers	Buffer/ Work Areas
0-35	200	200	70	245	250	35	40
40-45	350	500	150	540	360	40	80
50-55	500	1000	185	660	495	50	80
60-70	1000	SA - 1000 SB - 1500 SC - 2640	235	840	730	60	120

1. Shoulder taper length based on 10 ft. (standard shoulder width) offset. 2. Lane taper length based on 12 ft. (standard lane width) offset.

	SIGN HEIGHT	MAXIMUM WORK ZONE LENGTH (L)	Channelizer	Flashing Arrow Panel	Protective Vehicle
URBAN	1' Portable 7' Post	1 Mi.	Sign	Work Space	Truck/Trailer Mounted Attenuator (TMA)
RURAL DIVIDED	1' Portable 7' Post	2 Mi.			



Date:

Type of Work:

Location:

Work Zone Specialist:

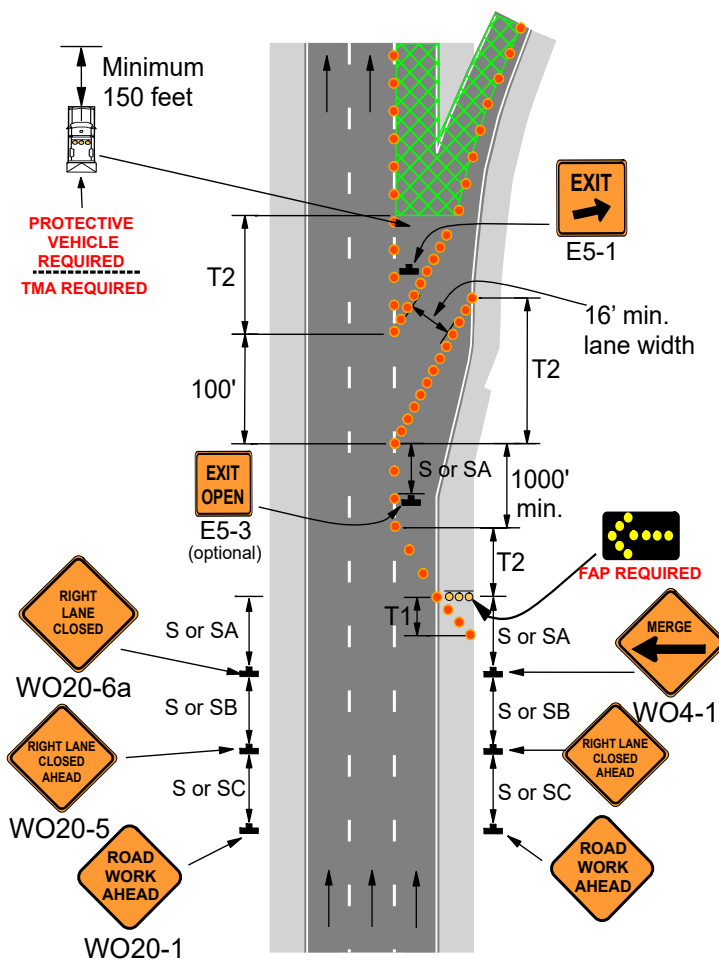
Field Notes:

616.8.42S (TA-42S) Stationary Work in the Vicinity of Exit Ramp

SPEED	SIGN SPACING (ft.)		TAPER LENGTH (ft.)		RECOMMENDED BUFFER LENGTH (ft.) (B)	CHANNELIZER SPACING (ft.)	
	Undivided (S)	Divided (S)	Shoulder (1) (T1)	Lane (2) (T2)		Tapers	Buffer/ Work Areas
0-35	200	200	70	245	250	35	40
40-45	350	500	150	540	360	40	80
50-55	500	1000	185	660	495	50	80
60-70	1000	SA - 1000 SB - 1500 SC - 2640	235	840	730	60	120

1. Shoulder taper length based on 10 ft. (standard shoulder width) offset. 2. Lane taper length based on 12 ft. (standard lane width) offset.

	SIGN HEIGHT	MAXIMUM WORK ZONE LENGTH (L)	Channelizer	Flashing Arrow Panel	Protective Vehicle
URBAN	1' Portable 7' Post	1 Mi.	Sign	Work Space	Truck/Trailer Mounted Attenuator (TMA)
RURAL DIVIDED	1' Portable 7' Post	2 Mi.			



Date:

Type of Work:

Location:

Work Zone Specialist:

Field Notes: