

616.8.43SD (TA-43SD) Short Duration Work on Exit Ramps

- **Short Duration:** Defined as workers on foot for 60 minutes or less in one location.
- **Location:** A location is defined as the maximum length of work zone (L) for the road you are working on.
- **Signs and channelizers may be reduced or eliminated.**
- **Always use a protective vehicle with a flashing arrow panel (FAP) and a truck/trailer mounted attenuator (TMA).**
 1. Activate high intensity rotating, flashing, oscillating, or strobe lights.
 2. Position TMA #1 a minimum of 150 feet in advance of the work space.
 3. Operate the FAP with the appropriate mode.
- **When using additional TMAs between TMA #1 and the advance warning vehicle:**
 1. Activate high intensity rotating, flashing, oscillating or strobe lights.
 2. Position the additional TMAs a minimum of 150 feet behind the next TMA.
 3. Operate the FAP with the appropriate mode.
- **Always use a shoulder advance warning vehicle when a shoulder is available next to the lane closure:**
 1. Activate high intensity rotating, flashing, oscillating, or strobe lights.
 2. Always use a protective vehicle (with or without a TMA), a flashing arrow panel (FAP) or changeable message sign (CMS), and the appropriate lane closure sign.
 3. Always use a TMA if the shoulder advance warning vehicle encroaches into the lane of traffic.
- **For roadways posted at 45 mph or below, shoulder advance warning and protective vehicles are required. If available, use a TMA:**
 1. Activate high intensity rotating, flashing, oscillating, or strobe lights.
 2. Position the protective vehicle at least 150 feet in advance of the work space, if possible.
 3. Equip the vehicle with a FAP and operate the flashing arrow panel (FAP) with the appropriate arrow mode.
 4. Equip the advance warning vehicle with a FAP set in the appropriate mode or a CMS with the appropriate lane closure message, and an appropriate lane closure sign.

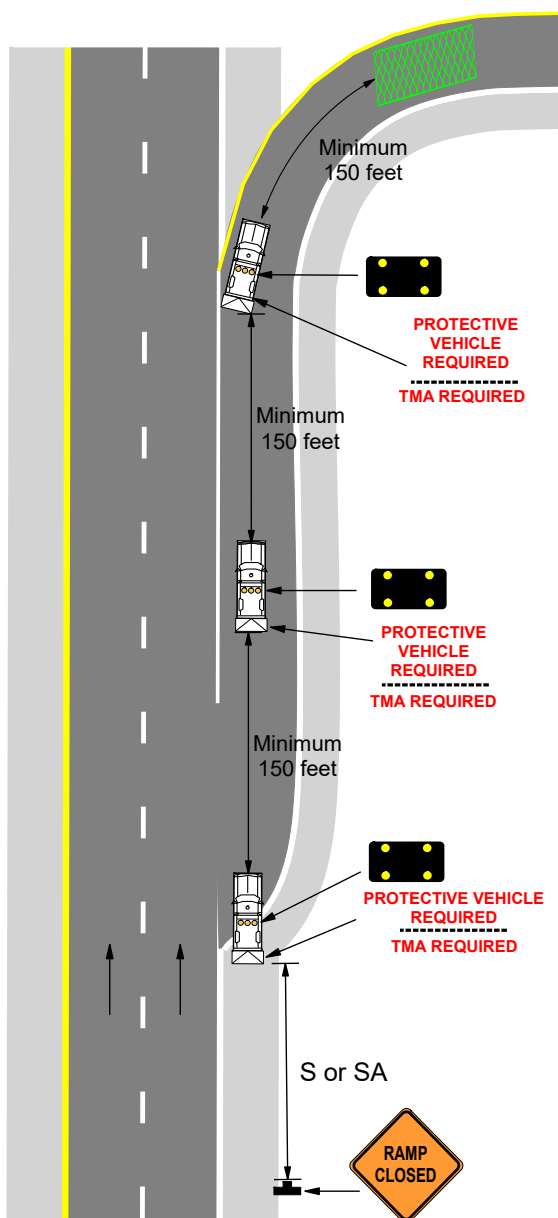
For other operations, refer to:
<ul style="list-style-type: none">• Mobile:<ol style="list-style-type: none">1. EPG 616.35M (TA-35M) Mobile Operation on a Multi-Lane Highway• Stationary:<ol style="list-style-type: none">1. EPG 616.33S (TA-33S) Stationary Lane Closure on a Multi-Lane Highway.

616.8.43SD (TA-43SD) Short Duration Work on Exit Ramps

SPEED Permanent Posted (mph)	SIGN SPACING (ft.)		TAPER LENGTH (ft.)		RECOMMENDED BUFFER LENGTH (ft.) (B)	CHANNELIZER SPACING (ft.)	
	Undivided (S)	Divided (S)	Shoulder (1) (T1)	Lane (2) (T2)			Buffer/ Work Areas
0-35	-	200	-	-	250	-	-
40-45	-	500	-	-	360	-	-
50-55	-	1000	-	-	495	-	-
60-70	-	SA - 1000	-	-	730	-	-

1. Shoulder taper length based on 10 ft. (standard shoulder width) offset. 2. Lane taper length based on 12 ft. (standard lane width) offset.

	SIGN HEIGHT	MAXIMUM WORK ZONE LENGTH (L)			
URBAN	1' Portable 7' Post	1 Mi.	 Sign	 Truck or Trailer Mounted Arrow Panel	 Protective Vehicle
RURAL DIVIDED	1' Portable 7' Post	2 Mi.		 Work Space	 Truck/Trailer Mounted Attenuator (TMA)



Date:

Type of Work:

Location:

Work Zone Specialist:

Field Notes: