

616.8.4M (TA-4M) Mobile Operation on a Shoulder


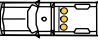

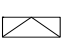


- **Mobile Operation:** Do not use this typical application (TA) when workers are on foot.
- **Advance warning signs** are optional.
- **If a protective vehicle is used:**
 1. Activate high-intensity rotating, flashing, oscillating, or strobe lights.
 2. Position the vehicle or equipment a minimum of 150 feet in advance of the work space, if possible.
 3. If the protective vehicle is equipped with a TMA, place a static sign under the flashing arrow panel.
 4. If used, operate the flashing arrow panel in the four-corner or alternating diamond caution mode.

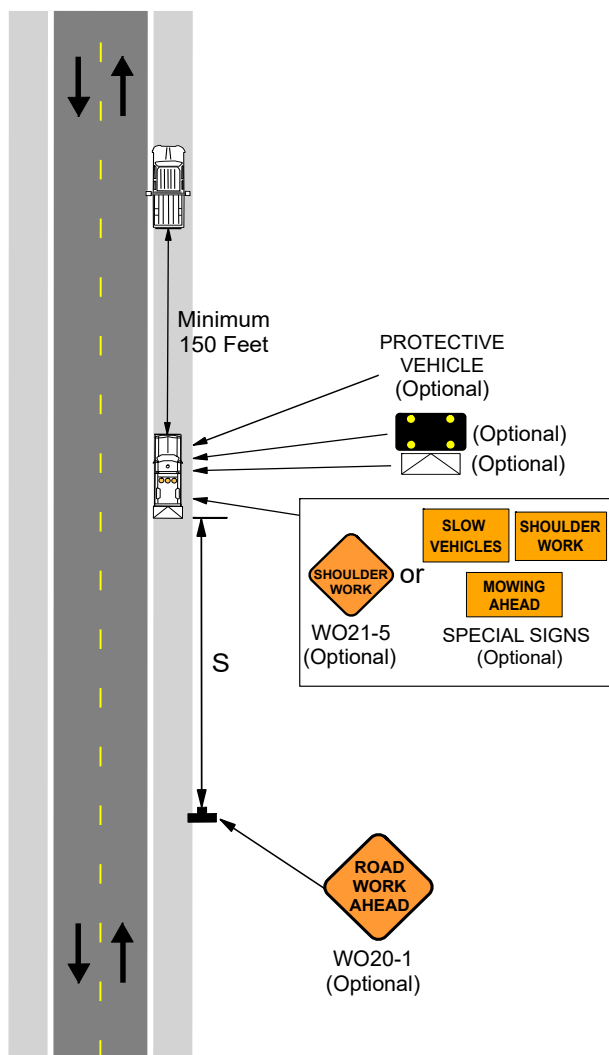
For other operations, refer to:
<ul style="list-style-type: none">• Short Duration (60 minutes or less):<ol style="list-style-type: none">1. EPG 616.8.4SD (TA-4SD) Short Duration Work on a Shoulder.• Stationary:<ol style="list-style-type: none">1. EPG 616.8.3S (TA-3S) Stationary Shoulder Work.

616.8.4M (TA-4M) Mobile Operation on a Shoulder

SPEED	SIGN SPACING (ft.)	TAPER LENGTH (ft.)		RECOMMENDED	CHANNELIZER SPACING (ft.)	
Permanent Posted (mph)	Undivided (S)	Shoulder (1) (T1)	Lane (2) (T2)	Buffer Length (ft.) (B)	Tapers	Buffer/ Work Areas
0-35	200	-	-	-	-	-
40-45	350	-	-	-	-	-
50-55	500	-	-	-	-	-
60-70	1000	-	-	-	-	-

1. Shoulder taper length based on 10 ft. (standard shoulder width) offset. 2. Lane taper length based on 12 ft. (standard lane width) offset.

TYPE OF ROADWAY	SIGN HEIGHT (MINIMUM)	MAXIMUM WORK ZONE LENGTH (L)	 Channelizer	 Protective Vehicle
URBAN	1' Portable 7' Post	1 Mi.	 Sign	 Truck/Trailer Mounted Attenuator (TMA)
RURAL DIVIDED	1' Portable 7' Post	2 Mi.	 Flashing Arrow Panel	 Work Vehicle
RURAL UNDIVIDED	1' Portable 5' Post	3 Mi.	<div>Date:</div>	
VEHICLE	48 Inches Recommended	-		



Date:

Type of Work:

Location:

Work Zone Specialist:

Field Notes:

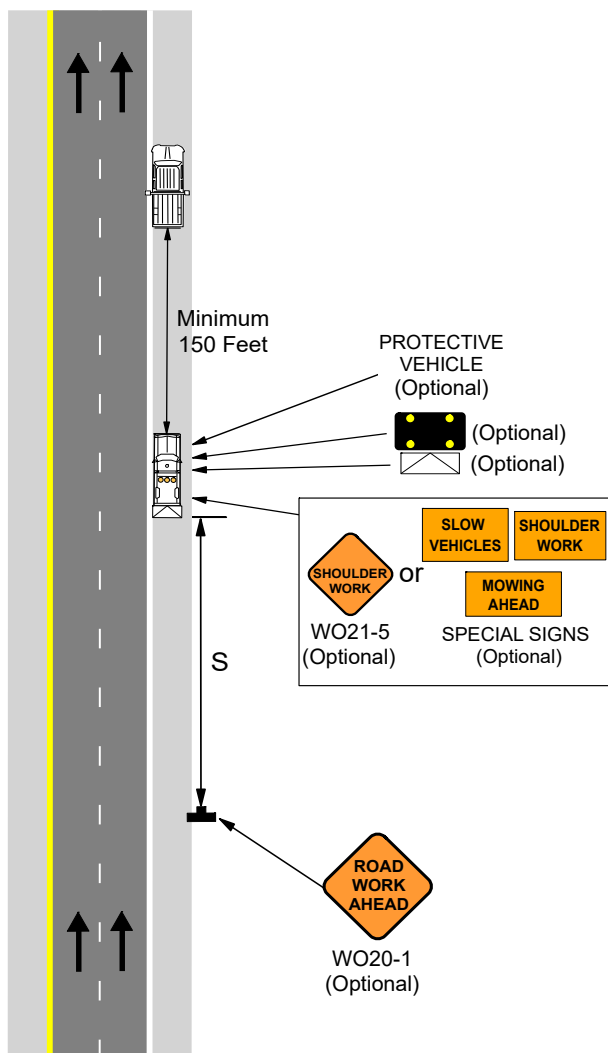
616.8.4M (TA-4M) Mobile Operation on a Shoulder

SPEED	SIGN SPACING (ft.)	TAPER LENGTH (ft.)		RECOMMENDED	CHANNELIZER SPACING (ft.)	
Permanent Posted (mph)	Divided (S)	Shoulder (1) (T1)	Lane (2) (T2)	Buffer Length (ft.) (B)	Tapers	Buffer/ Work Areas
0-35	200	-	-	-	-	-
40-45	350	-	-	-	-	-
50-55	500	-	-	-	-	-
60-70	1000	-	-	-	-	-

1. Shoulder taper length based on 10 ft. (standard shoulder width) offset.

2. Lane taper length based on 12 ft. (standard lane width) offset.

TYPE OF ROADWAY	SIGN HEIGHT (MINIMUM)	MAXIMUM WORK ZONE LENGTH (L)	<div><div><div><div><div></div></div><div>Channelizer</div></div><div><div><div></div></div><div>Sign</div></div><div><div><div></div></div><div>Flashing Arrow Panel</div></div></div><div><div><div><div></div></div><div>Protective Vehicle</div></div><div><div><div></div></div><div>Truck/Trailer Mounted Attenuator (TMA)</div></div><div><div><div></div></div><div>Work Vehicle</div></div></div></div>	
URBAN	1' Portable 7' Post	1 Mi.		
RURAL DIVIDED	1' Portable 7' Post	2 Mi.		
RURAL UNDIVIDED	1' Portable 5' Post	3 Mi.		
VEHICLE	48 Inches Recommended	-	<div></div>	



Date:

Type of Work:

Location:

Work Zone Specialist:

Field Notes: