

## 616.8.8B (TA-8B) Road Closure with Barrier

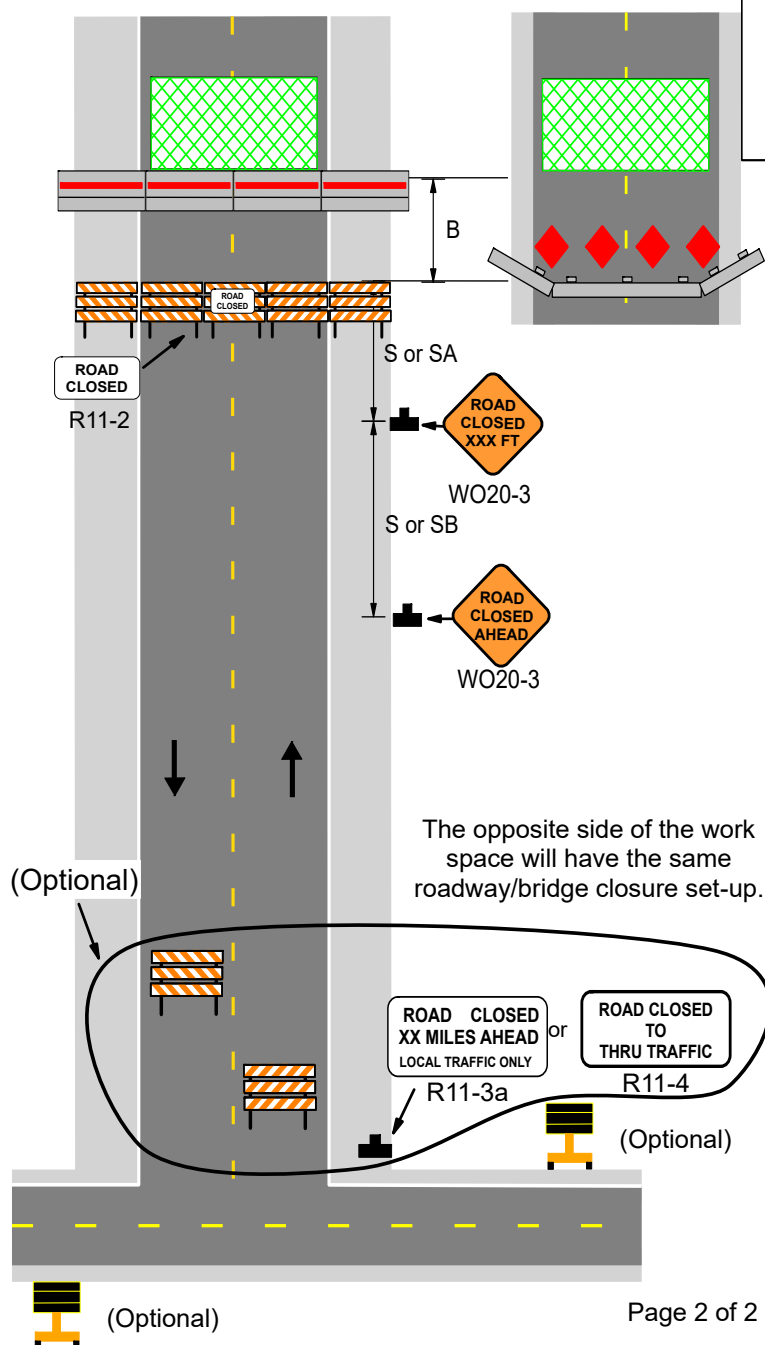
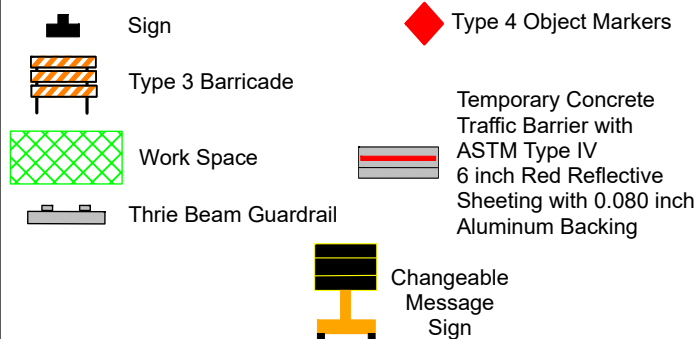
- **Always use advance warning signs:**
  1. Use EPG 616.17M (TA-17M) Mobile Operation on Two-lane Highways for placement of advance warning signs.
  2. Use lightweight ROAD CLOSED sign placed on the center barricade located at the full closure or place rigid sign 7 to 10 feet behind the barricades at the sign height appropriate for the roadway type.
  3. Position The ROAD CLOSED XX MILES AHEAD LOCAL TRAFFIC ONLY or ROAD CLOSED TO THRU TRAFFIC sign at the first state route.
- **Barrier options at the full closure:**
  1. Thrie Beam guardrail and Type 4 object markers.
  2. Temporary concrete traffic barriers placed behind Type 3 barricades.
  3. Use crashworthy barricades to close entire driving surface including the shoulder.
  4. Barricades and "ROAD CLOSED" signs may be located at the nearest state route intersection.
  5. Additional barricades can be staggered at other intersections in advance of the full closure at the discretion of the supervisor, work zone specialist, or engineer.

<b>For other operations, refer to:</b>
<ul style="list-style-type: none"><li>• <b>Long-Term Closures:</b><ol style="list-style-type: none"><li>1. EPG 616.6.2.2 Flags and Advance Warning Rail System (AWRS).</li><li>2. EPG 616.3.9 Detours and Diversions.</li><li>3. EPG 616.6.19 Detour sign.</li><li>4. EPG 616.8.9 Road Closed Beyond Junction Detour.</li></ol></li><li>• <b>Refer to the following standard plans for additional guidance:</b><ol style="list-style-type: none"><li>1. Standard Plan 606.00 Guardrail for thrie beam guardrail.</li><li>2. Standard Plan 616.10 Temporary Traffic Control Devices for Type 3 barricades.</li><li>3. Standard Plan 903.03 Post Installation and Sign Mounting Details for the Type 4 object marker.</li><li>4. Standard Plan 617.20 Temporary Concrete Traffic Barrier for concrete barriers.</li><li>5. Standard Plan 1042 Highway Sign Material for 6-inch wide, 10 to 12 foot long red retroreflective sheeting.</li></ol></li></ul>

**616.8.8B (TA-8B) Road Closure with Barrier**

SPEED	SIGN SPACING (ft.)		TAPER LENGTH (ft.)		RECOMMENDED	CHANNELIZER SPACING (ft.)	
Normal Posted (mph)	Undivided (S)	Divided (S)	Shoulder (T1)	Lane (T2)	Buffer Length (ft.) (B)	Tapers	Buffer/ Work Areas
0-35	200	200	-	-	250	-	-
40-45	350	500	-	-	360	-	-
50-55	500	1000	-	-	495	-	-
60-70	1000	SA - 1000 SB - 1500 SC - 2640	-	-	730	-	-

TYPE OF ROADWAY	SIGN HEIGHT (MINIMUM)
URBAN	1' Portable 7' Post
RURAL DIVIDED	1' Portable 7' Post
RURAL UNDIVIDED	1' Portable 5' Post



Date:

Type of Work:

Location:

Work Zone Specialist:

Field Notes: